

est 1979

 Jeremy
Leaf & Co.



Avenue Road, London

£1,600 Per Month

- One double bedroom
- Modern shower room
- Allocated Parking
- 0.6 Miles to Tube Station
- Kitchen
- Wardrobes included
- Close proximity to High Road shops and transport
- Council Tax Band D

863 High Road, London, N12 8PT
020 8446 4295

property@jeremyleaf.co.uk
<https://www.jeremyleaf.co.uk/>

Avenue Road, London, N12 8XA

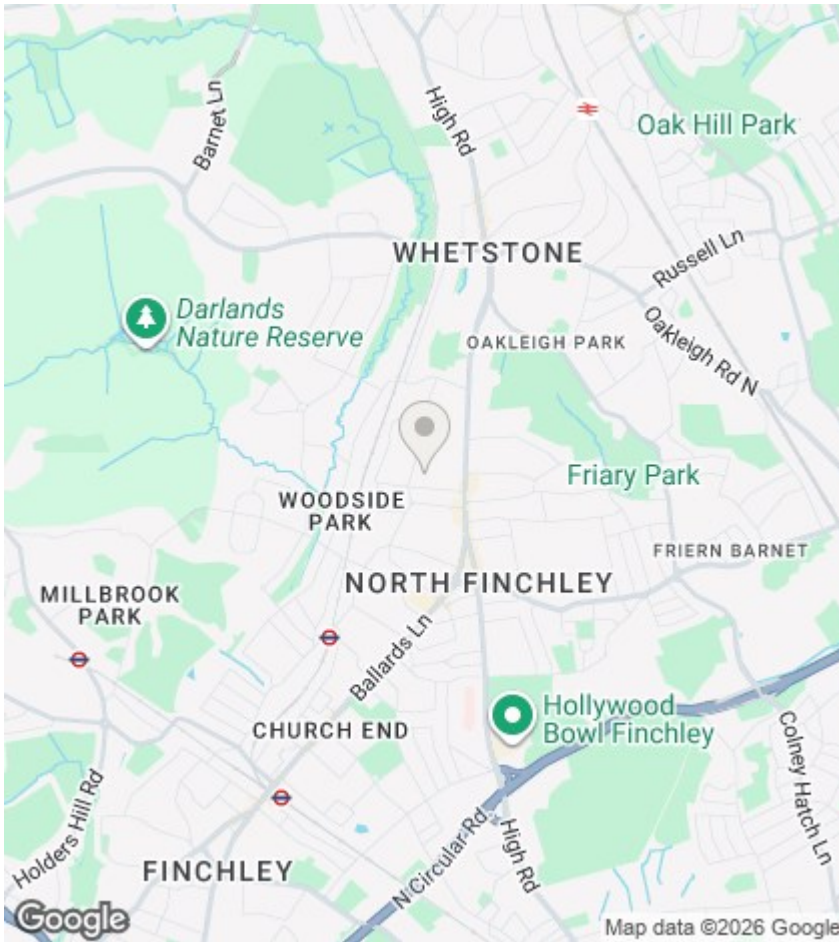
A well-presented one bedroom ground floor garden flat located in a quiet cul-de-sac within only 0.6 miles of Woodside Park (Northern Line) station and conveniently located for North Finchley High Road's shops and bus routes. The property benefits from its own patio leading onto an extensive landscaped communal garden and allocated parking. Available now. Council Tax Band D.



Council Tax Band: D







Directions

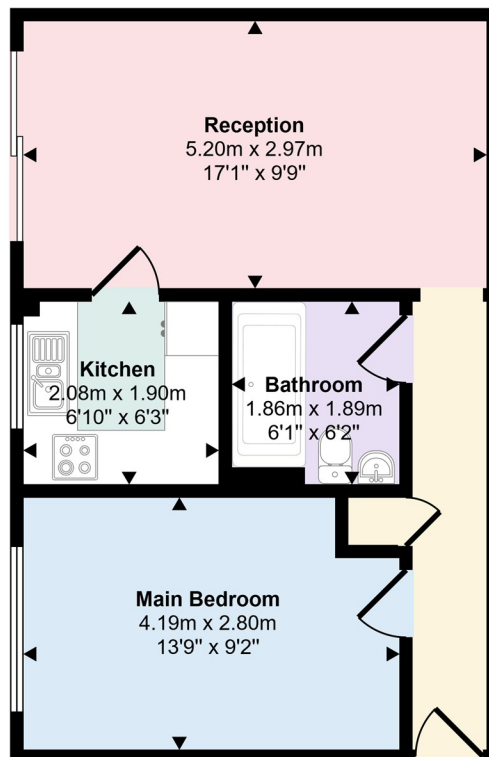
Viewings

Viewings by arrangement only. Call 020 8446 4295 to make an appointment.

EPC Rating:

C

Energy Efficiency Rating		Current	Potential
Very energy efficient - lower running costs			
(92 plus) A			
(81-91) B			
(69-80) C		74	77
(55-68) D			
(39-54) E			
(21-38) F			
(1-20) G			
Not energy efficient - higher running costs			
England & Wales		EU Directive 2002/91/EC	



Floorplan