

oakheart



£685,000

Asking Price

Watchouse Road, Stebbing, Dunmow



Located on the sought-after Watchouse Road in the charming village of Stebbing, this beautifully presented detached home offers stylish modern living with stunning countryside views.

Built to a high standard and offering over 1,160 sq ft of well-planned accommodation, the property is perfectly suited to modern family life. The spacious open-plan living and dining area creates a bright and welcoming space ideal for both relaxing and entertaining, while the contemporary kitchen has been

thoughtfully designed with practicality and style in mind.

Upstairs, there are three generous bedrooms and two modern bathrooms, providing comfortable and versatile accommodation for families, guests, or those working from home.

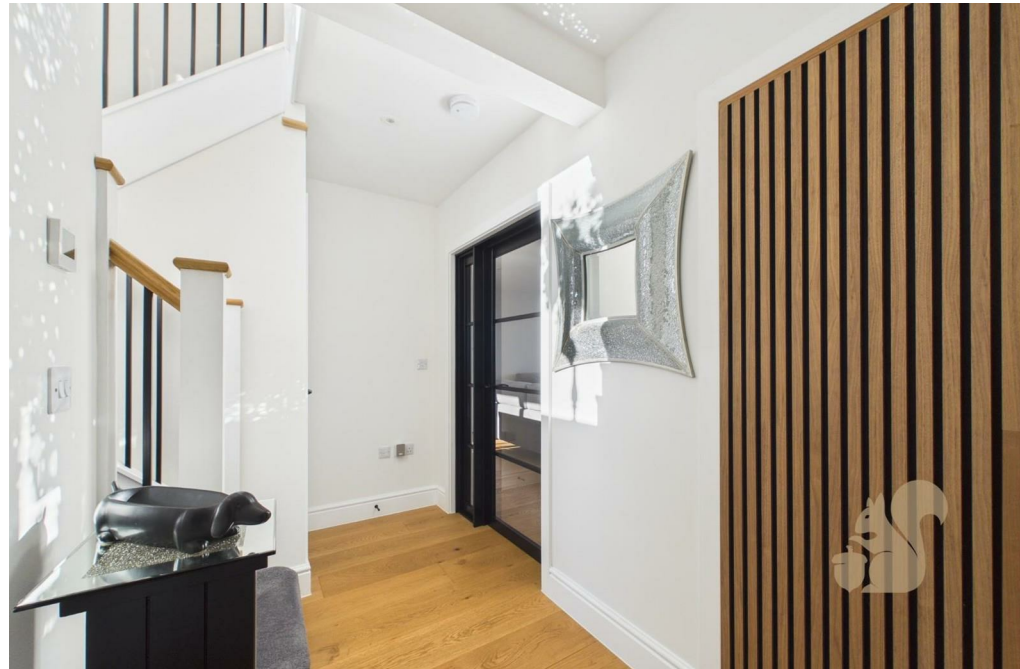
As a recently built property, the home also benefits from approximately seven years remaining on the builder's warranty, offering added peace of mind for prospective buyers.

Externally, the property features a large driveway and a single garage complete with an electric door and power points.

Set within the peaceful village of Stebbing, yet conveniently positioned for access to Great Dunmow and surrounding amenities, this exceptional home offers the perfect blend of countryside living and contemporary comfort.











oakheart

Approximate total area⁽¹⁾
108 m²
1163 ft²

(1) Excluding balconies and terraces

Calculations reference the RICS IPMS 3C standard. Measurements are approximate and not to scale. This floor plan is intended for illustration only.


GIRAFFE360

Local Authority:

Tenure:
Freehold

Council Tax Band:

Energy Efficiency Rating

	Current	Potential
<i>Very energy efficient - lower running costs</i>		
(92 plus) A		
(81-91) B		
(69-80) C		
(55-68) D		
(39-54) E		
(21-38) F		
(1-20) G		
<i>Not energy efficient - higher running costs</i>		
England & Wales	EU Directive 2002/91/EC 	

Agents Note: Whilst every care has been taken to prepare these particulars, they are for guidance purposes only. All measurements are approximate and are for general guidance purposes only and whilst every care has been taken to ensure their accuracy, they should not be relied upon.