



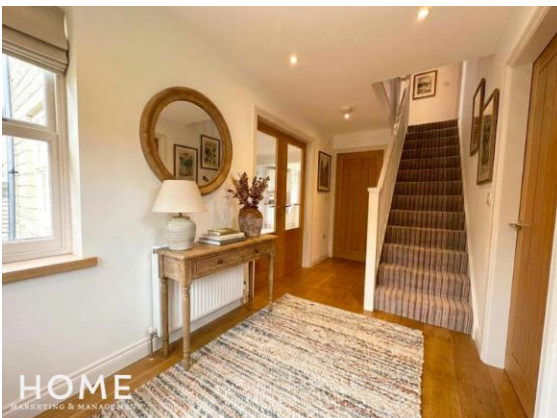
HOME

MARKETING & MANAGEMENT

RUSSELL COTTAGE, LONDON LANE, RAWDON LS19 6BR

OFFERS OVER £699,950

Modern Stone Built Detached
5 Double Bedrooms (Potential 6)
Spacious Living Room with Stove
House Bathroom & En suite Bathroom
Open plan dining to Modern Kitchen
Zoned C/H, D/G. Large Det Garage
Enclosed Rear Garden
Large Drive with Ample Parking
Sought After 'Little London' Location
Excellent Family Sized Home



OFFERS OVER £699,950

GENERAL DESCRIPTION

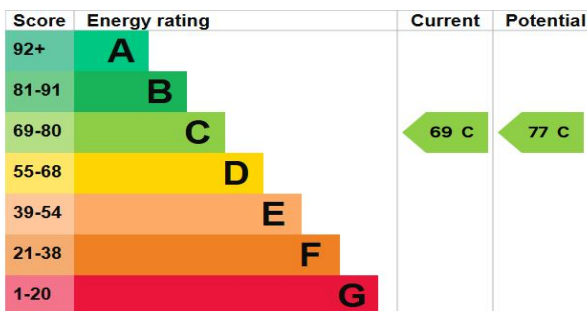
A modern bright and spacious 5 bedroom detached home with a cottage feel situated in the sought after area of "Little London" This well presented property will be of particular interest to executives and growing families looking for next the step up to a spacious and well located home which benefits from: large driveway with parking for multiple vehicles; large detached garage with Power /GAS/ WATER SUPPLIES ideal for conversion into HOUSE work studio/offices/gym habitable annex (SUBJECT PLANNING / BUILDING REGS) saving on rental costs of business premises or just use for secure storage for cars and equipment; open plan dining and kitchen area with modern fitted units and integral fridge/freezer; dual aspect living room with solid fuel burning stove and patio doors to rear garden; private flat rear garden with over 100sq meters of quality pet friendly astro turf. Lawn and patio gardens to front; 4 generous sized double bedrooms that includes Large dual aspect 24sq METER master bedroom (potential to easily convert to two double bedrooms if required) with en suite modern four piece house bathroom suite with freestanding bath; long distance views; zoned gas central heating with Valient combination boiler; double glazing. Offers excellent access to local pubs and cafes; a short walk to Micklefield park; excellent access to Apperley bridge train station offering easy access to Leeds City centre in 10 mins; superb choice of schools and an early inspection is recommended to appreciate the size; style and location of this lovely home.



TENURE
Freehold

ROOM MEASUREMENTS

- ENTRANCE HALL** 14' 11" x 6' 3" (4.55m x 1.91m)
- GROUND FLOOR WC** 6' 3" x 4' 10" (1.91m x 1.49m)
- LIVING ROOM** 24' 2" x 11' 0" (7.38m x 3.36m)
- DINING ROOM / RECEPTION ROOM 2** 13' 7" x 11' 1" (4.15m x 3.38m)
- BREAKFAST KITCHEN** 17' 9" x 10' 5" (5.42m x 3.20m)
- STAIRCASE AND LANDING** 17' 1" x 6' 6" (5.23m x 1.99m)
- MASTER BEDROOM** 24' 7" x 10' 11" (7.51m x 3.34m)
- EN SUITE BATHROOM** 6' 11" x 6' 5" (2.13m x 1.98m)
- DOUBLE BEDROOM 2** 11' 2" x 10' 4" (3.42m x 3.15m)
- DOUBLE BEDROOM 3** 11' 1" x 7' 2" (3.40m x 2.20m)
- HOUSE BATHROOM** 11' 2" x 6' 2" (3.41m x 1.88m)
- 2ND STAIRCASE AND LANDING**
- DOUBLE BEDROOM 4** 15' 1" x 14' 6" (4.60m x 4.43m)
- DOUBLE BEDROOM 5** 15' 0" x 11' 3" (4.59m x 3.43m)
- GARAGE** 21' 1" x 19' 10" (6.45m x 6.05m)
- GARAGE ANNEXE** 19' 1" x 11' 7" (5.83m x 3.54m)



The graph shows this property's current and potential energy rating.

Details are compiled from observation and information supplied by the vendors. Measurements have been taken with an electronic measure and, whilst believed to be accurate, may be subject to variation or mechanical error. Services and appliances have had only a visual inspection and have not been tested by HomeMM.

OPENING HOURS

Pudsey Office

Monday to Friday

Saturday

Sunday & Bank Holidays

8.30am – 5.00pm

9.00am – 1.00pm

Closed