



Flat 2, 126 Christchurch Road

London, SW2 3DF

Asking Price £350,000

Nestled on the sought-after Christchurch Road in the heart of Tulse Hill, this beautifully presented top floor flat seamlessly blends modern comfort with timeless Victorian character. Offering one generously sized double bedroom, the property is ideal for first-time buyers, professional couples, or anyone seeking a stylish and well-maintained London home.

Set within an elegant period conversion, the flat boasts high ceilings, large sash windows, and an abundance of natural light, all contributing to a bright and airy living environment. The interiors are in excellent condition throughout. Residents also benefit from access to a communal garden—an ideal retreat for relaxing outdoors or catching up with neighbours in a peaceful setting.

Perfectly positioned, the flat enjoys easy access to a range of local amenities, green spaces such as Brockwell park, and excellent transport links, making daily commuting and weekend adventures equally convenient. The vibrant neighbourhood offers a mix of independent cafes, restaurants, and cultural highlights, all just moments from your doorstep.

In summary, this charming one-bedroom flat on Christchurch Road presents a fantastic opportunity to own a beautifully maintained home full of character, in one of South London's most desirable areas. Early viewing is highly recommended to fully appreciate all that this property has to offer.

Viewing

Please contact our Galloways West Norwood Office on 020 8766 6111

if you wish to arrange a viewing appointment for this property or require further information

- ONE DOUBLE BEDROOM
- VICTORIAN CONVERSION
- EXCELLENT CONDITION
- COMMUNAL GARDEN
- TOP FLOOR FLAT
- LOTS OF NATURAL LIGHT
- SEPARATE KITCHEN
- 12 MINUTE WALK TO BROCKWELL PARK
- 3 MINUTE WALK TO TULSE HILL STATION
- (DISTANCES ESTIMATED VIA GOOGLE MAPS)



1



1

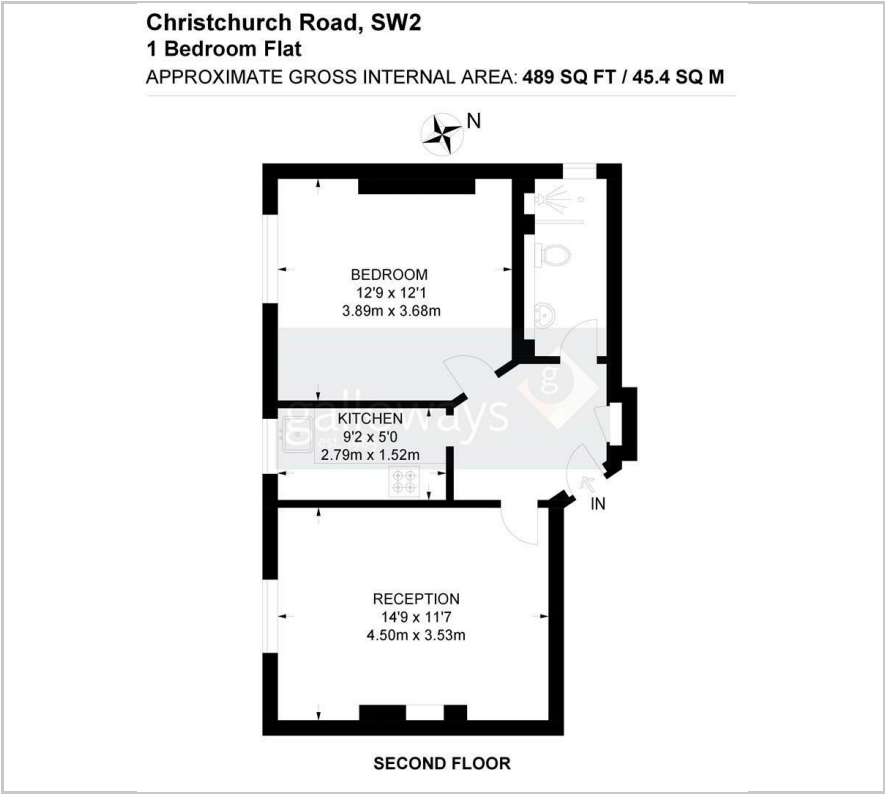


1

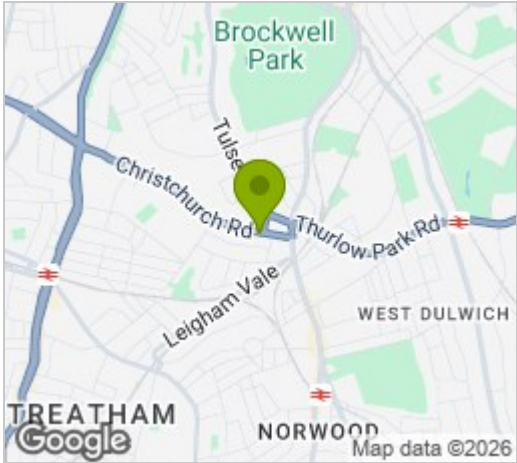


D

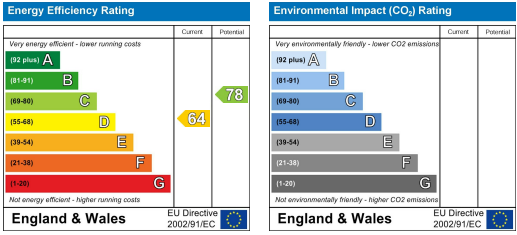
Floor Plan



Area Map



Energy Efficiency Graph



These particulars, whilst believed to be accurate are set out as a general outline only for guidance and do not constitute any part of an offer or contract. Intending purchasers should not rely on them as statements of representation of fact, but must satisfy themselves by inspection or otherwise as to their accuracy. No person in this firms employment has the authority to make or give any representation or warranty in respect of the property.