



Chatsworth Way, SE27 | £2,100 Per Calendar  
Month

02087029888

[westnorwood@pedderproperty.com](mailto:westnorwood@pedderproperty.com)

**pedder**  
We live local

# In General

- Two-double-bedrooms
- Split-level
- Additional study / office
- Ample storage
- Bright and light
- Additional WC
- Available now

# In Detail

A well presented and generously proportioned split-level, top-floor conversion offering two spacious double bedrooms plus a separate study, ideally located in the heart of West Norwood.

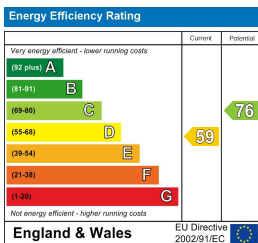
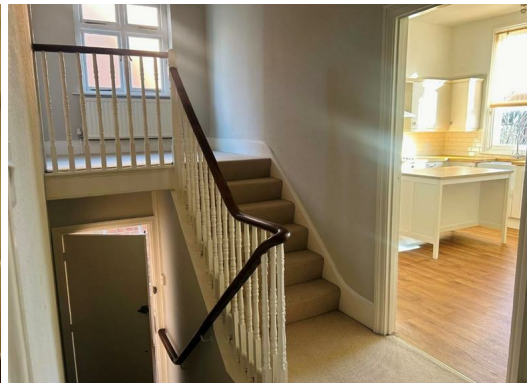
Finished to a high standard throughout, this characterful home features a modern eat-in kitchen fitted with integrated appliances, including a dishwasher, perfect for both everyday living and entertaining. The naturally bright reception room boasts impressive high ceilings, creating a wonderful sense of space and light. There are two large double bedrooms, an additional study room ideal for home working, and a well-appointed bathroom with a shower over the bath.

Further benefits include a private rear garden, accessed via a convenient side entrance.

Situated on Chatsworth Way, SE27, the property is superbly positioned close to the vibrant amenities, independent cafés, pubs, and restaurants of West Norwood High Street, as well as the popular surroundings of West Dulwich. West Norwood station is also within easy reach, offering excellent transport links.

An ideal rental for a professional couple or two sharers seeking extra space, character, and a prime location. Early viewings are highly recommended.

EPC: D | Council Tax Band: D | Offered unfurnished | Available Now | HD: £484.61 | SD: £2,423.07



Pedder Property Ltd trading as Pedder for themselves and for the vendor/landlord of this property whose agents they are, give notice that (1) these particulars do not constitute any part of an offer or contract, (2) all statements contained within these particulars are made without responsibility on the part of Pedder or the vendor/landlord, (3) whilst made in good faith, none of the statements contained within these particulars are to be relied upon as a statement of representation or fact, (4) any intending purchaser/tenant must satisfy him/herself by inspection or otherwise as to the correctness of each of the statements contained within these particulars, (5) the vendor/landlord does not make or give either Pedder or any person in their employment any authority to make or give representation or warranty whatsoever in relation to this property.

