

The Danebridge @ Scholars Court Scholars Court, Malvern, WR14 3NT Prices From £550,000

****Part exchange available**** Introducing The Danebridge, now launched at Scholars Court offering a select collection of impressive and spacious four bedroom detached family homes designed for modern living.

The Danebridge

The Danebridge is an impressive four-bedroom detached home offering approximately 1,447 sqft of spacious and flexible living accommodation. The ground floor features a generous open-plan kitchen and family area with bay window, a separate living room, a useful study, utility room, and downstairs WC. Upstairs, the principal bedroom benefits from an en-suite, alongside three further well-proportioned bedrooms and a modern family bathroom. Externally, the home enjoys two allocated parking spaces and a private driveway with single garage, making it ideal for growing families seeking space and comfort.

Measurements:

GROUND FLOOR:

Living - 11' 7" x 15' 0"

Kitchen - 10' 8" x 10' 10"

Family area - 10' 8" x 14' 5"

WC - 6' 10" x 3' 3"

Study - 11' 2" x 9' 10"

Utility - 6' 10" x 7' 2"

FIRST FLOOR:

Principal Bedroom - 10' 9" x 14' 4"

Ensuite - 8' 0" x 5' 9"

Bedroom 2 - 11' 2" x 8' 10"

Bedroom 3 - 9' 8" x 9' 4"

Bedroom 4 - 10' 9" x 7' 11"

Bathroom - 11' 2" x 6' 5"

Location

At Scholars Court, you're just a short stroll from the shops and cafés of Barnards Green, with Malvern's vibrant town centre only a short drive away. Elegant Victorian-style streets and the town's rich spa-town heritage provide a beautiful backdrop, while independent shops, welcoming cafés and a lively cultural scene give the area a charming, village-like atmosphere. Beyond the town, the rolling Malvern Hills and open countryside make it easy to escape into nature whenever you wish.

- Regular bus connections to Malvern and Worcester
- A short 3-minute drive to Great Malvern Railway and to Malvern Town Centre
- Just a 25-minute drive to Worcester along the convenient A449, putting city amenities within easy reach

Specification Highlights:

INTERIORS

- White grained cottage style doors with polished chrome handles
- Built-in wardrobes to principal bedroom*

KITCHEN

- Symphony designed kitchens
- Laminated or Quartz* worktops to kitchen
- Electrolux or AEG* kitchen appliances
- Fully integrated fridge freezer*
- Fully integrated dishwasher*

BATHROOM

- Ideal Standard sanitaryware with Aqualisa taps
- Porcelanosa wall tiles to all wet areas
- Porcelanosa floor tiles to family bathroom*

ENERGY-SAVING FEATURES

- Electric vehicle charger
- Solar PV panels
- Hive heating

EXTERNAL

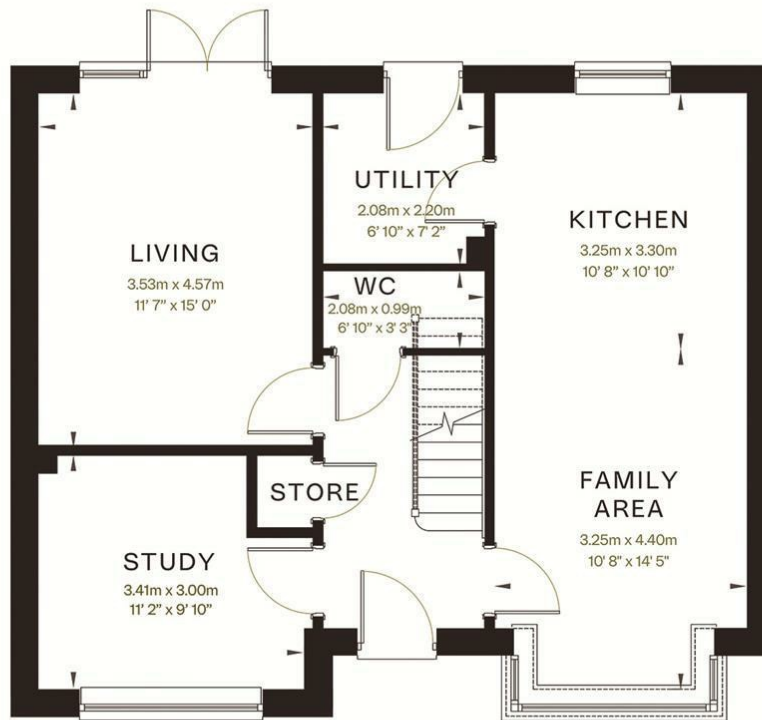
- Slabbed pathways to front and rear garden
- Turf to front garden
- Ring wired doorbell*

*Optional extra. Specifications are a guideline only and we reserve the right to change the specification at any time without prior notice. Please speak with our Sales Advisor for further information.

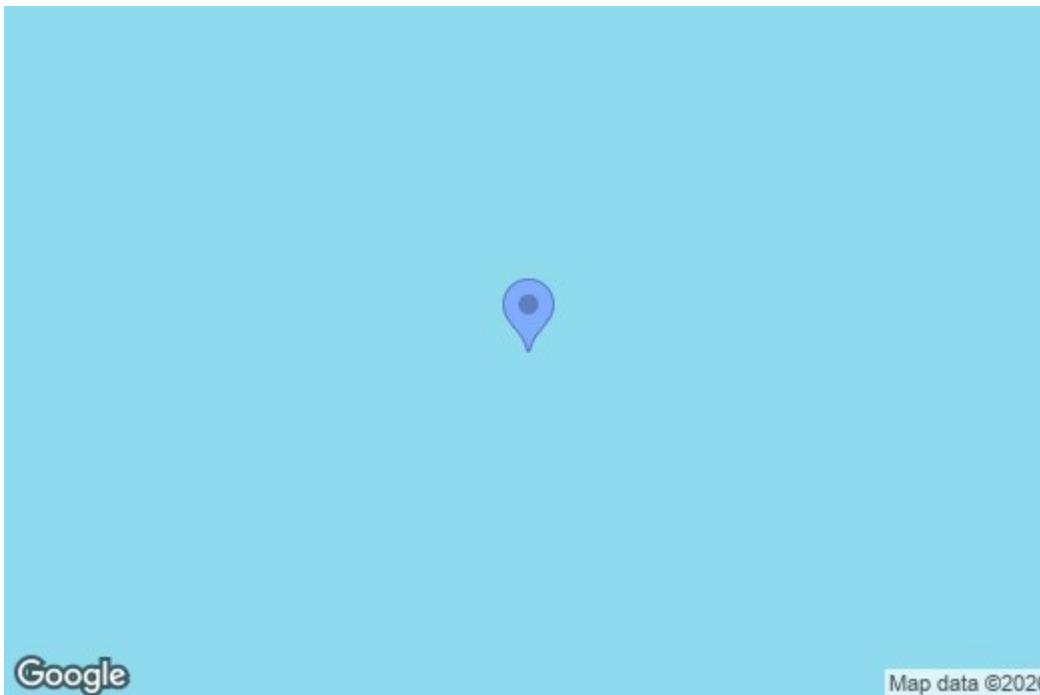
Agents Notes:

1. Images for illustrative purposes only
2. Whilst these floor plans have been prepared with all due care for the convenience of the intending purchaser, the information is provided as a preliminary guide and may vary. Please ask our Sales Advisor for further details on specific homes. Dimensions are taken from the widest points and may vary from actual. Layouts and fixtures shown may vary and should not be used for fitting carpets, curtains, furniture, or appliances. Any furniture illustrated is for guidance only and is not included with the property. The floorplans depict typical layouts and are not to scale. Cupboards in some homes may vary. Images are artists impressions and may vary.

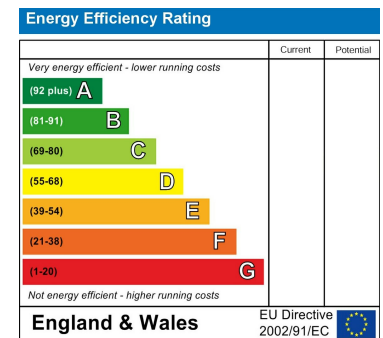
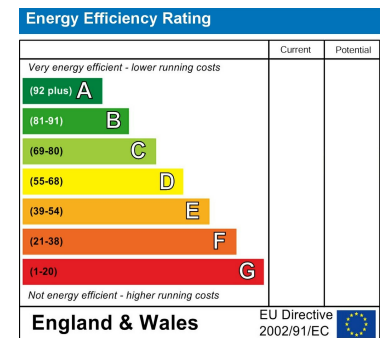
Floor Plan



Area Map



Energy Efficiency Graph



These particulars, whilst believed to be accurate are set out as a general outline only for guidance and do not constitute any part of an offer or contract. Intending purchasers should not rely on them as statements of representation of fact, but must satisfy themselves by inspection or otherwise as to their accuracy. No person in this firm's employment has the authority to make or give any representation or warranty in respect of the property.

13A Worcester Road, Malvern, Worcestershire, WR14 4QY

Tel: 01684 561866 Email: info@dennyandsalmond.co.uk Web: www.dennyandsalmond.co.uk

naea | propertymark
PROTECTED