

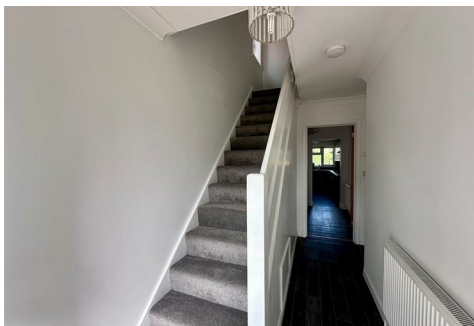


MARTINS ESTATES

SALES AND LETTINGS

69 High Street
Ashford
Kent
TN24 8SF

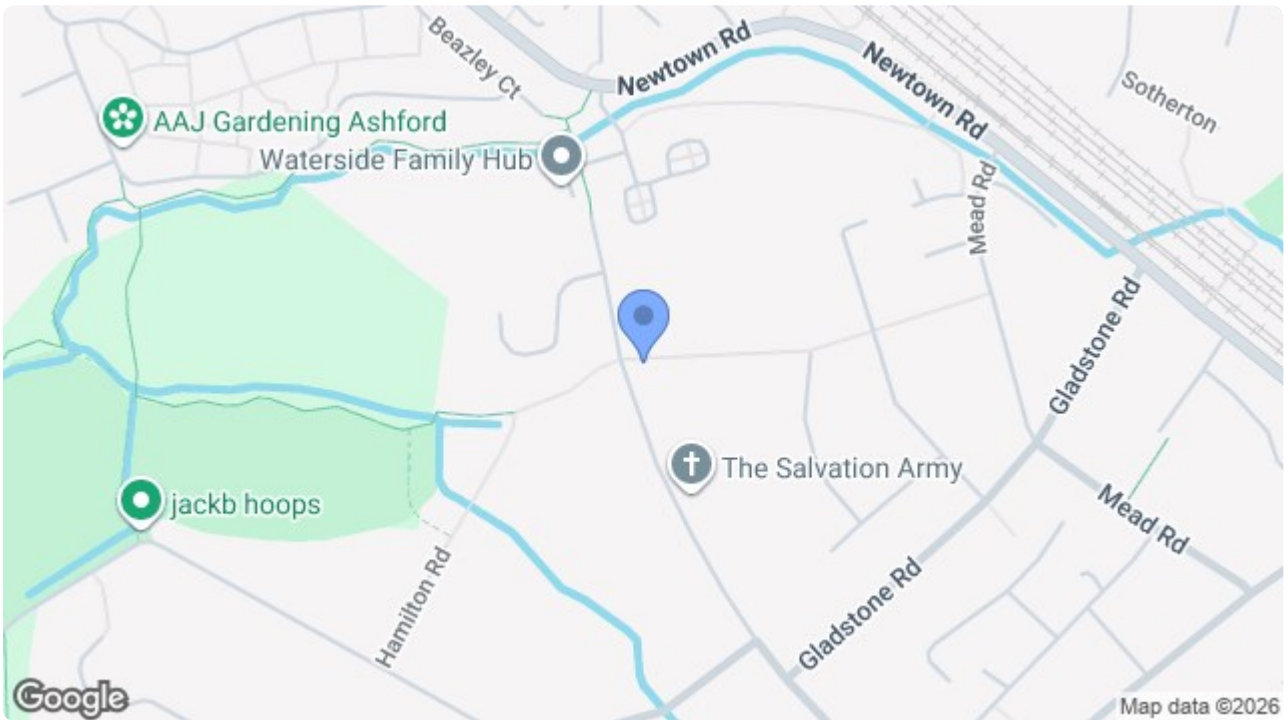
Tel: 01233 610 444



137 Cudworth Road, Kent, TN24 0BB

£1,350 PCM

137 Cudworth Road, Kent, TN24 0BB



Energy Efficiency Rating		Current	Potential
<i>Very energy efficient - lower running costs</i>			
(92 plus) A			
(81-91) B			
(69-80) C			
(55-68) D			
(39-54) E			
(21-38) F			
(1-20) G			
<i>Not energy efficient - higher running costs</i>			
		73	79
England & Wales		EU Directive 2002/91/EC	

Environmental Impact (CO ₂) Rating		Current	Potential
<i>Very environmentally friendly - lower CO₂ emissions</i>			
(92 plus) A			
(81-91) B			
(69-80) C			
(55-68) D			
(39-54) E			
(21-38) F			
(1-20) G			
<i>Not environmentally friendly - higher CO₂ emissions</i>			
England & Wales		EU Directive 2002/91/EC	

69 HIGH STREET, ASHFORD, KENT TN24 8SF

Tel: 01233 610444 www.martinesstates.co.uk email: sales@martinesstates.co.uk



Martins Estates Property Management Ltd
 Registered in England and Wales No. 10031401
 Registered office: 69 High Street, Ashford, Kent, TN24 8SF
 Martins Wilkins T/A Martins Estates Sales and Lettings