



 4  2  2

Henstaff Mews Henstaff Court, Pontyclun
offers in the region of **£775,000**



About the property

Introducing this exceptional four-bedroom converted barn residence, set within the highly sought-after Henstaff Court and accessed via an attractive tree-lined entrance. Located just outside the desirable village of Groes Faen, the property offers convenient access to local shops, schools, and amenities while enjoying a peaceful setting.

Beautifully presented throughout, the home offers spacious and versatile accommodation ideal for modern living. The ground floor features a generous 26-foot lounge, perfect for both relaxing and entertaining, alongside an impressive 28-foot summer room that provides a bright, open space with views over the garden. The kitchen/diner is well-appointed and practical, complemented by a downstairs WC and a separate office space with its own WC—ideal for home working.

Upstairs, there are four well-proportioned bedrooms, including a principal bedroom with en suite, and a second bedroom also benefiting from en suite facilities. A modern family bathroom serves the remaining bedrooms.

Externally, the property boasts a beautifully landscaped rear garden with stunning countryside views. To the front, a driveway provides off-road parking and a further access road which leads to a spacious double garage.

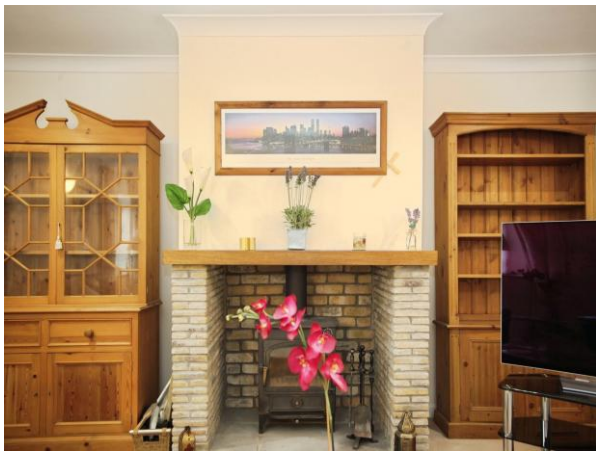
This superb home combines generous living space, high-quality presentation,

Accommodation









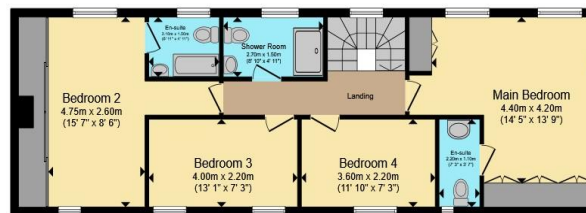


01443 222851

talbotgreen@peteralan.co.uk



Ground Floor



First Floor

Total floor area 214.8 m² (2,312 sq.ft.) approx

This floor plan is for illustrative purposes only. It is not drawn to scale. Any measurements, floor areas (including any total floor area), openings and orientation are approximate. No details are guaranteed, they cannot be relied upon for any purpose and they do not form part of any agreement. No liability is taken for any error, omission or misstatement. A party must rely upon its own inspection(s). Powered by www.propertybox.io



Important Information

Note while we endeavour to make our sales details accurate and reliable, if there is any point which is of particular interest to you, please contact the office and we will be pleased to confirm the position for you. We have not personally tested any apparatus, equipment, fixtures, fittings or services and cannot verify they are in working order or fit for their purposes. Nothing in these particulars is intended to indicate that carpets or curtains, furnishings or fittings, electrical goods (whether wired or not), Gas fires or light fittings or any other fixtures not expressly included form part of the property offered for sale. This computer generated Floorplan, if applicable, is intended as a general guide to the layout and design of the property. It is not to scale and should not be relied upon for dimensions. Tenure: We cannot confirm the tenure of the property as we have not had access to the legal documents. The buyer is advised to obtain verification from their solicitor or surveyor.

Peter Alan Limited is registered in England and Wales under company number 2073153, Registered Office is Cumbria House, 16-20 Hockliffe Street, Leighton Buzzard, Bedfordshire, LU7 1GN. VAT Registration Number is 500 2481 05. For activities relating to regulated mortgages and non-investment insurance contracts, Peter Alan Limited is an appointed representative of Connells Limited which is authorised and regulated by the Financial Conduct Authority. Connells Limited's Financial Services Register number is 302221. Most buy-to-let mortgages are not regulated.

