



Radley House
10 Palmer Road, SW11





This stunning three-bedroom, three-bathroom sub-penthouse apartment in Radley House has commanding 270 degree views of London's skyline in this highly sought-after development.

The apartment offers 2,057 sqft of living space with a spacious, open plan kitchen / reception with a private terrace; a master bedroom with walk-in wardrobe, private balcony and a wonderful en-suite bathroom; second bedroom with en-suite bathroom and fitted wardrobes; third bedroom with fitted wardrobes and a further separate family bathroom. There is also a large utility room and 3 storage cupboards.

The property is finished to high specification including fully integrated Miele appliances in the kitchen, touch screen controls, comfort cooling and underfloor heating.

Residents enjoy a 24 hour concierge service and high spec facilities including a swimming pool, sauna, steam room and a roof terrace.

Radley House is conveniently located moments from Battersea Park, adjacent to the iconic Battersea Power Station and located just a short walk from the many iconic boutiques shops and restaurants of Chelsea and Belgravia, located across nearby Chelsea Bridge. The property has excellent transport links with Queenstown Road and Battersea Park Overground Stations offering direct connections to Waterloo and Victoria and the newly opened Battersea Power Station giving access to the Northern Line Underground.

- Sub-Penthouse Apartment
- City Views
- High Specification
- 24hr Concierge
- Residents Pool & Spa
- Private Roof Terrace

£10,500 pcm

Additional tenant charges apply (fees apply to non-AST tenancies only)

Tenancy Agreement Fee: £300

References per Tenant/Guarantor: £60

Inventory check (approx. £100 – £250 inc. VAT)

chestertons.co.uk/property-to-rent/applicable-fees

Energy Efficiency Rating		
Energy efficient - lower running costs	Current	Potential
92-100 A		
81-91 B		
69-80 C		
55-68 D		
49-54 E		
41-48 F		
31-39 G		
Not energy efficient - higher running costs		
England, Scotland & Wales		
EU Directive 2002/91/EC		

Minimum Term: 12 months
Deposit Required: £14,538.46
Local Authority: London Borough of Wandsworth
Council Tax Band: G
EPC Rating: B
Furnished

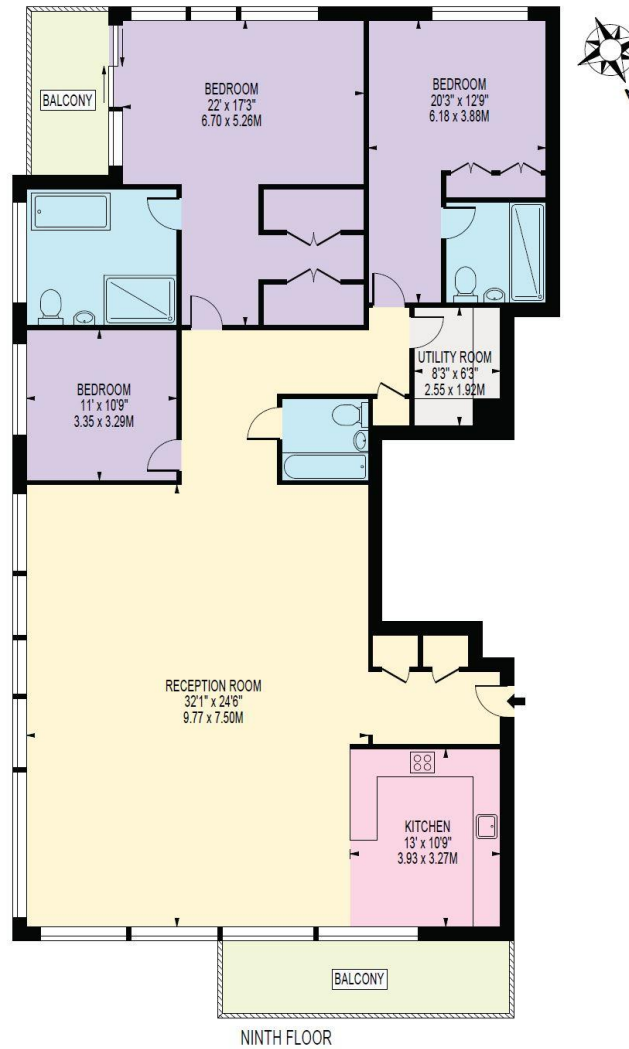
Chestertons Battersea Park & Nine Elms Lettings

62-64 Battersea Bridge Road
 London
 SW11 3AG

batterseapark@chestertons.co.uk
 02030408269
chestertons.co.uk

RADLEY HOUSE

APPROXIMATE GROSS INTERNAL FLOOR AREA: 2057 SQ FT - 191.13 SQ M



Chesterton UK Services Limited trading as Chestertons for themselves and for the vendor of this property whose agents they are, give notice that (i) these particulars do not constitute any part of an offer or contract, (ii) all statements contained within these particulars are made without responsibility on the part of Chestertons or the vendor, (iii) whilst made in good faith, none of the statements contained within these particulars are to be relied upon as a statement or representation of fact, (iv) any intending purchasers must satisfy themselves by inspection or otherwise as to the correctness of each of the statements contained within these particulars, (v) the vendor does not make or give either Chestertons or any person in their employment any authority to make or give representation or warranty whatsoever in relation to this property. Wide angle lenses may be used. ©Copyright Chestertons | Chesterton Global Ltd | Registered Office 40 Connaught Street, Hyde Park, London W2 2AB Registered Company Number 05334580.



This paper is
100% recyclable