



FOR SALE

## Allcroft Road, Kentish Town NW5

ASKING PRICE £840,000



3 Bedroom



Kitchen



1 Reception



1 Bathroom



Roof Terrace



Parking Permit

# Allcroft Road, Kentish Town NW5

ASKING PRICE £840,000

A beautifully presented Victorian terraced home set over the top two floors, combining classic period charm with modern living.

The property features high ceilings, a feature fireplace, decorative wall panelling, and ornate ceiling cornices, showcasing its elegant heritage.

The modern renovated kitchen is fitted with Miele appliances, including a double oven, hob, and dishwasher, plus a Quooker tap and Insinkerator for convenience.

Offering two spacious double bedrooms and a single bedroom, the home provides flexible living for families, professionals, or those seeking a home office or guest space.

A private garden and a lovely terrace provide ideal spots for entertaining or relaxing outdoors.

Perfectly located just a few minutes' walk from Kentish Town West and Chalk Farm stations, and within easy reach of Parliament Hill and Primrose Hill.

Further benefits include resident parking permits for two vehicles.

A rare opportunity to own a characterful Victorian home in one of North London's most desirable locations.







840,000.00



3 Bedroom



Leasehold



1 Bathroom



London Borough of Camden



1 Reception



Council Tax Band



Roof Terrace and



EPC Band



Parking Permit

Allcroft Road, NW5

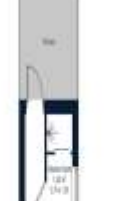
Approximate Gross Internal Area = 91.92 m<sup>2</sup> / 989.42 ft<sup>2</sup>



Ground Floor



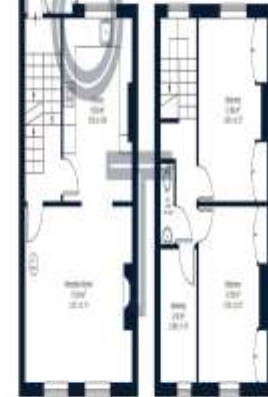
First Floor



Ground Floor



Second Floor



Brought to you by

OLIVERS TOWN

This plan is for layout guidance only and is not to scale unless stated. All dimensions, including windows, doors, fittings, and the total area, are approximate measurements. Produced by a



KENTISH TOWN | 189 Kentish Town Rd | London | NW5 2JU | T: 020 7284 1222 | hello@oliverstown.com

ASSOCIATED MAYFAIR | 121 Park Lane | London | W1K 7AG | T: 020 3368 8602 | hello@oliverstown.com