



## Edgewood Mews, N3

£425,000

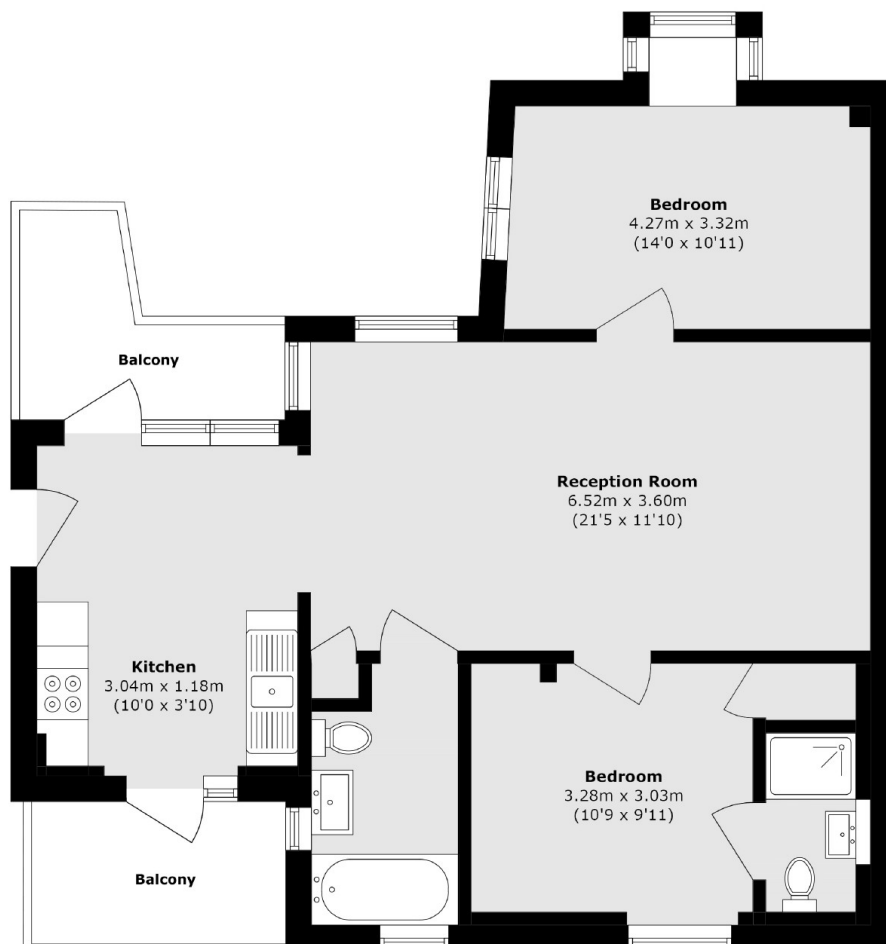
A beautifully presented two bedroom, two bathroom apartment set within a modern development. This spacious home features a bright and airy reception room, complemented by a separate fully fitted kitchen that opens onto two private balconies.

Edgewood Mews is a highly sought after residential area for families, known for its excellent transport links, including Finchley Central and Golders Green tube stations, as well as proximity to top-rated local schools and places of worship, which adds to its strong appeal.

### Features

- Two Double Bedrooms
- Two Bathrooms
- Separate Kitchen
- Two Private Balconies
- Excellent Transport Links
- Secure Underground Parking

# Edgewood Mews, London, N3



Total area (approx.): 68.1 sq. m (733.0 sq. ft)

Balcony area (approx.): 12.8 sq. m (137.7 sq. ft)