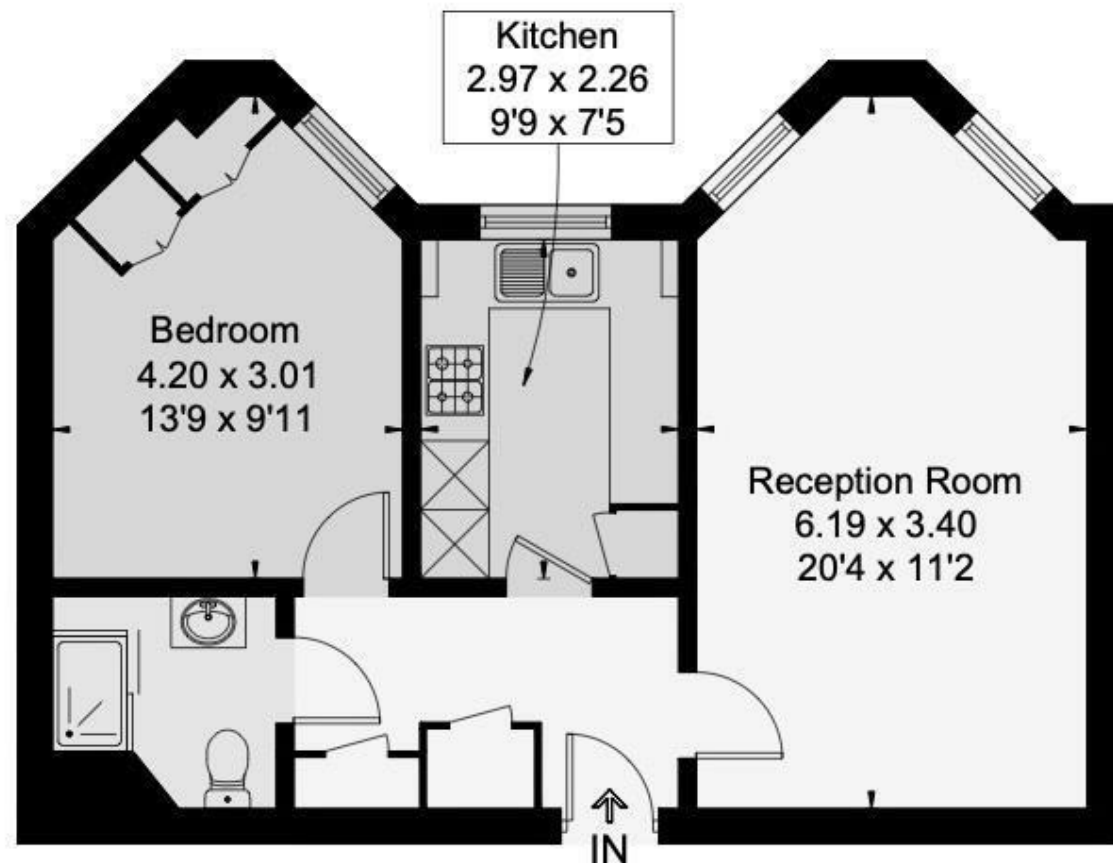



Approximate Floor Area = 49.2 sq m / 530 sq ft



 This floor plan has been drawn in accordance with RICS Property Measurement 2nd edition.  
All measurements, including the floor area, are approximate and for illustrative purposes only. @fourwalls-group.com #99412



**Finchley Road, London, NW11 7SB**

Situated within the sought-after Heathside retirement development in the heart of Golders Green, this bright and spacious one-bedroom first floor apartment offers comfortable, secure and well-connected retirement living.

Ideally located on Finchley Road, the development is just a short walk from the beautiful open spaces of Golders Hill Park and Hampstead Heath, while also being conveniently close to Golders Green Underground Station (Northern Line), local bus routes, shops, cafés and restaurants.

The apartment itself comprises a welcoming reception room with lovely south and east-facing windows allowing for an abundance of natural light, a fitted kitchen with ample cupboard space and integrated appliances including electric hob, oven, washing machine and fridge freezer, a generous double bedroom with built-in storage, and a modern shower room complete with heated towel rail and mirrored cabinet.

Further benefits include gas central heating, double glazing, an entry phone system and excellent storage throughout, including two walk-in storage cupboards.

Heathside is a well-maintained and highly regarded retirement development designed to provide both independence and peace of mind. Residents benefit from lift access, a relaxing communal lounge, fully fitted communal kitchen for entertaining, beautifully landscaped front and rear gardens, a guest suite for visitors, salon facilities, ample on-site parking, House Manager, caretaker/handyman services and a 24-hour emergency call system.

This superb apartment offers a wonderful opportunity to enjoy secure and community-focused living in one of North West London's most desirable locations.

Leasehold

**£240,000**

