

SELLING & RENTING
HOMES
— Since 2005 —



LAND ESTATES
SALES, LETTINGS & MANAGEMENT



BEDONWELL ROAD BEXLEYHEATH

£2,000 Per Month

- Three bedroom house.
- Private driveway.
- Great location.
- Two shower rooms.
- Outdoor storage.

Land Estates are delighted to introduce this spacious, Three bedroom property located in Bexleyheath.

The ground floor of this property consists of a large lounge/diner, a kitchen and a downstairs shower room.

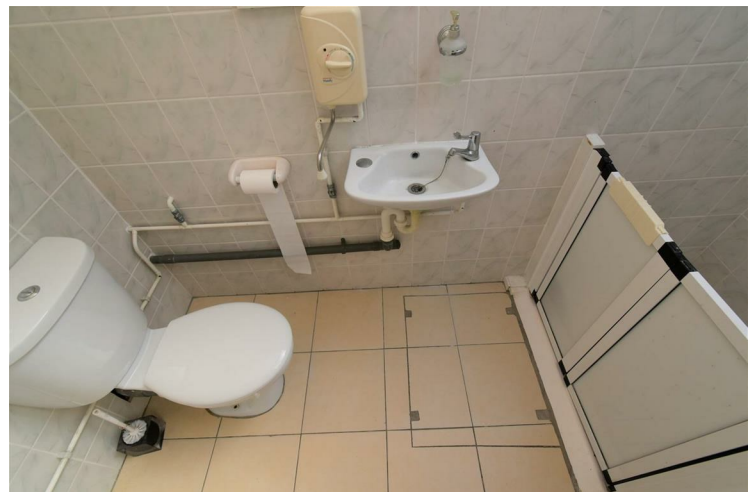
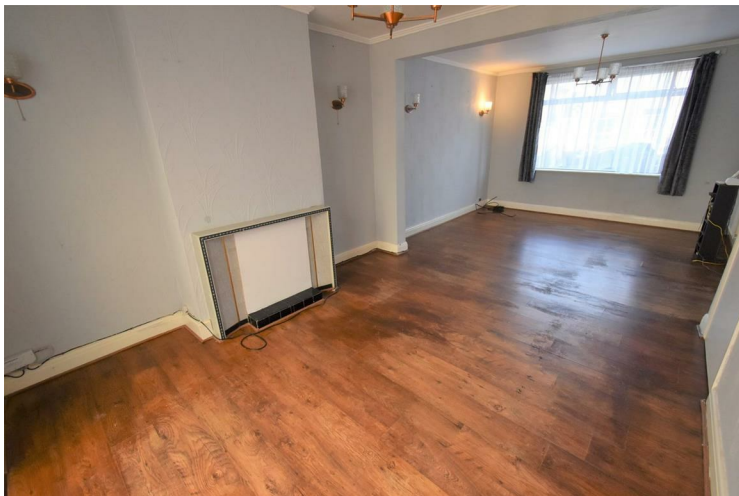
As you make your way to the first floor you have three bedrooms. Two of which are doubles. The family shower room is also located upstairs.

To the rear there is a very good sized garden as well as a large storage out house.

The property also benefits from a private driveway with enough space for three cars.


The property is offered unfurnished and is available from late April.

To arrange a viewing please contact Land Estates.







Energy Efficiency Rating		
	Current	Potential
<i>Very energy efficient - lower running costs</i>		
(92 plus) A		
(81-91) B		
(69-80) C		
(55-68) D		
(39-54) E		
(21-38) F		
(1-20) G		
<i>Not energy efficient - higher running costs</i>		
England & Wales	EU Directive 2002/91/EC 	

EPC Rating: Council Tax Band: E

Agents Note: Whilst every care has been taken to prepare these particulars, they are for guidance purposes only. All measurements are approximate and are for general guidance purposes only and whilst every care has been taken to ensure their accuracy, they should not be relied upon and potential buyers/tenants are advised to recheck the measurements

Land Estate
6 Market Street
Dartford
Kent
DA1 1ET

01322 413501
info@landestate.co.uk
www.landestate.co.uk



LAND ESTATES
SALES, LETTINGS & MANAGEMENT