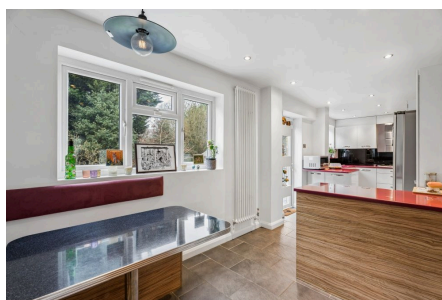


Dove Park, Chorleywood

£1,400,000

🛏️ 5 🚗 3 🚗 3



A Stunning 5 Bedroom Detached Family Home in Dove Park Chorleywood

*** PLEASE QUOTE REF KW 0404 ***

Key Features

- Deatched Home
- 2 Reception Rooms
- Driveway Parking
- Study
- One Family Bathroom
- 5 Bedrooms
- Immaculate Condition
- Sought After Location
- Two En-Suite Bathrooms
- Garage

Approximate Gross Internal Area
Ground Floor = 109.4 sq m / 1,178.0 sq ft
First Floor = 100.2 sq m / 1,078.1 sq ft
Total = 209.6 sq m / 2,256.1 sq ft

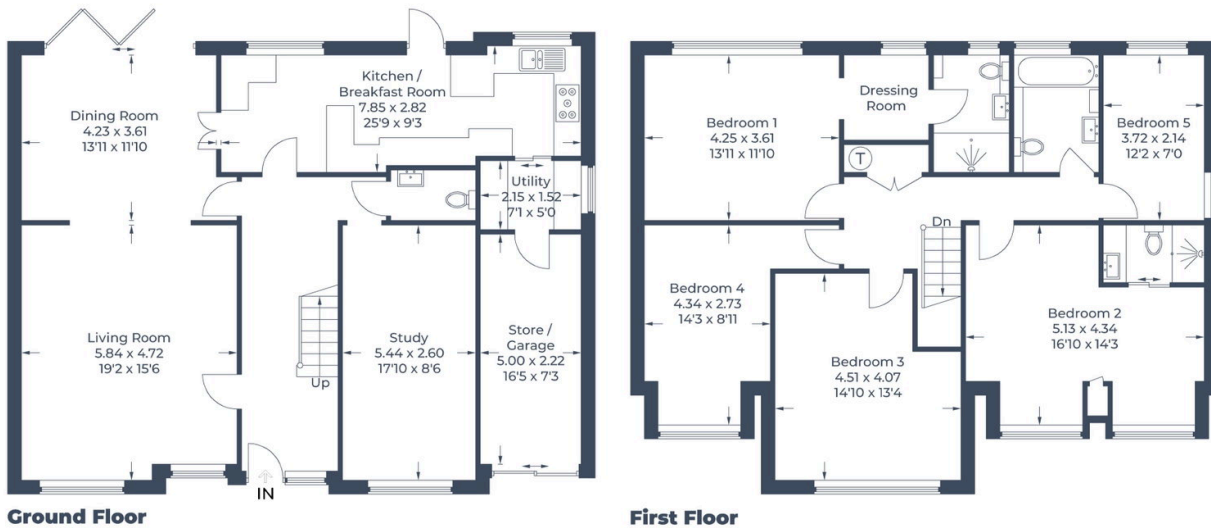


Illustration for identification purposes only,
measurements are approximate, not to scale.
© CJ Property Marketing Produced for EXP - Kate Woodward