



Wren Avenue, NW2

£1,400,000

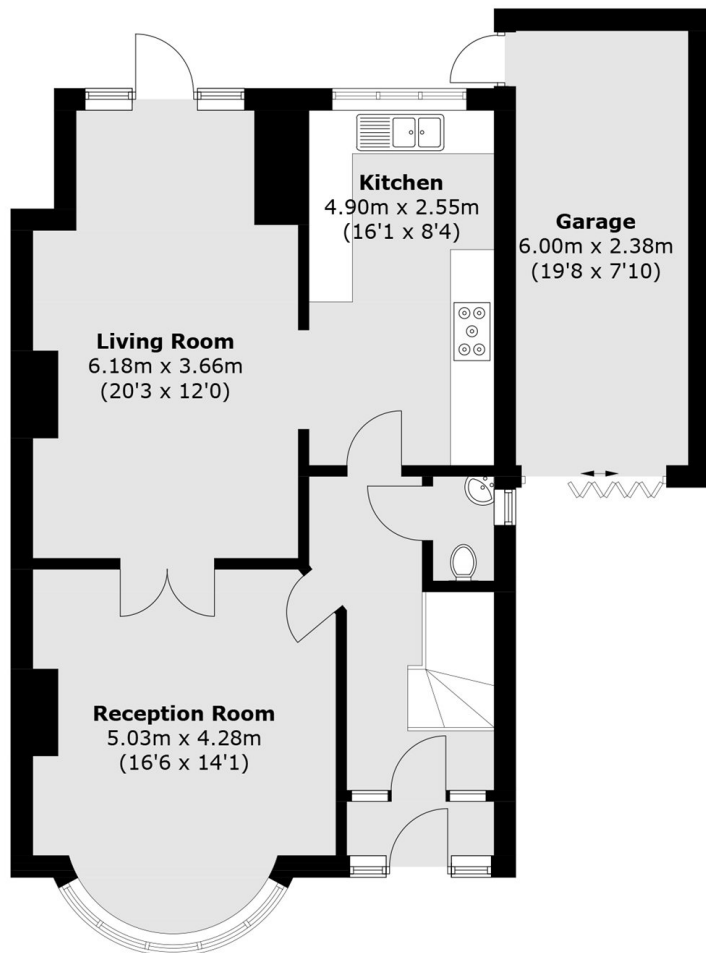
This substantial 4 bedroom house is conveniently located in close proximity to local amenities and transport links and enjoys a wonderful reception room, eat-in kitchen and an extensive private garden. The property is well located for a good selection of shops, bars and restaurants

Excellent transport links with Cricklewood Station (Thameslink), multiple bus routes, the North Circular and the M1 nearby. There are a plethora of local parks close by and a wide selection of well thought of schools including: American School of London, Abercorn Prep, Arnold House, Highgate, Latymer, Kew House School and Wembley French International School.

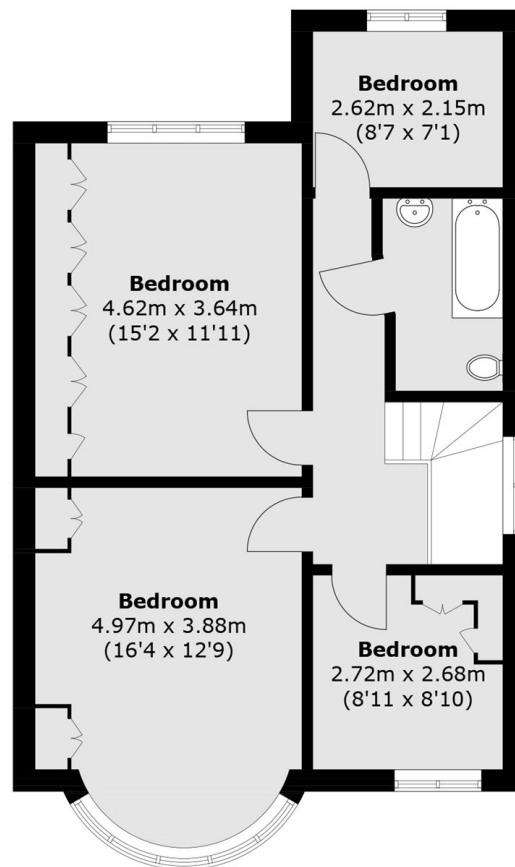
Features

- Four bedrooms
- Private garden
- Driveway
- Excellent location
- Garden
- Chain free

Wren Avenue, London, NW2



Ground Floor



First Floor

Approx Internal Area: 129.0 sq. m (1,388.5 sq. ft)
Garage: 14.7 sq. m (158.2 sq. ft)
Total: 143.7 sq. m (1,546.7 sq. ft)