

## Fulham Road, SW6

£775,000

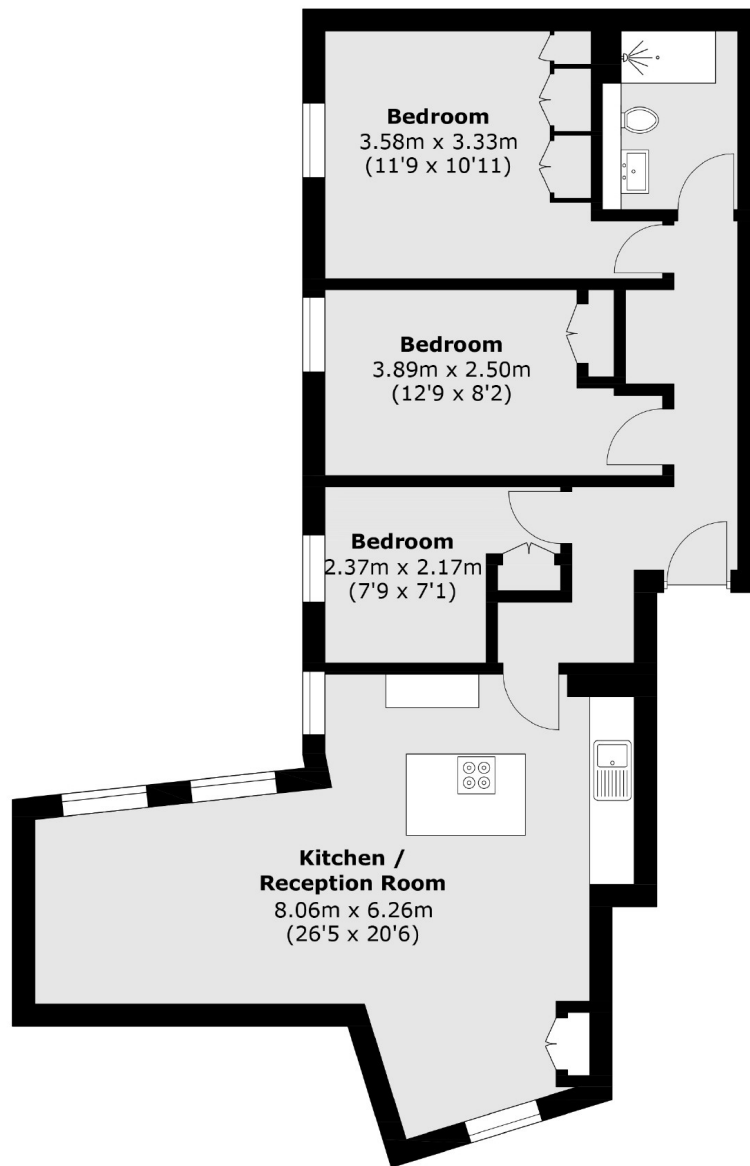
A beautifully presented three-bedroom lateral flat set within a recently refurbished building. The dual-aspect open-plan kitchen and living area has been thoughtfully designed to maximise both entertaining and living space, featuring a stylish kitchen island, generous worktop areas and fully integrated appliances. The bright and spacious layout creates an ideal setting for modern living. All three bedrooms benefit from built-in wardrobes, providing excellent storage while maximising the available floor space in each room.

Ideally positioned on the corner of Maxwell Road within the prestigious Moore Park Estate, this property enjoys an exceptional location on the Chelsea border, just off Fulham Road. Parsons Green, Fulham Broadway and the iconic King's Road are all within easy walking distance, offering excellent transport links alongside an outstanding selection of boutique shops, cafés, stylish wine bars, traditional pubs and renowned restaurants. The open green spaces of Eel Brook

### Features

- Three Bedrooms
- Immaculately Refurbished
- Sold Chain Free
- Open Plan Kitchen Living
- Lateral Victorian Conversion
- Bespoke Brand New Appliances

# Fulham Road, London, SW6



Total area (approx.): 78.2 sq. m (841.7 sq. ft)