

RENT ME



FENNEL DRIVE, RED LODGE

£1,350 PCM



3



2



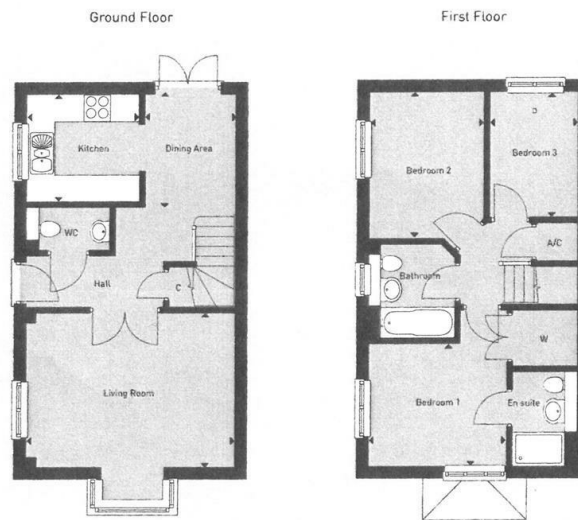
1



C

3 Bedroom House - Detached located in Red Lodge

AVAILABLE NOW 3 Bedroom semi-detached house, Kitchen/dining room, Living room, Cloakroom, en-suite to master with WALK IN CLOSET and family bathroom. Enclosed rear garden and allocated parking space.



Kitchen	2450mm x 2561mm	8'1" x 8'5"
Dining Area	2564mm x 2059mm	8'5" x 6'9"
Living Room	4735mm x 3530mm	15'7" x 11'7"
Bedroom 1	3169mm x 2811mm	10'5" x 9'3"
Bedroom 2	3361mm x 2619mm	11'0" x 8'7"
Bedroom 3	2874mm x 2000mm	9'5" x 6'7"
Total Area	83.5 sq.m.	897.9 sq.ft.

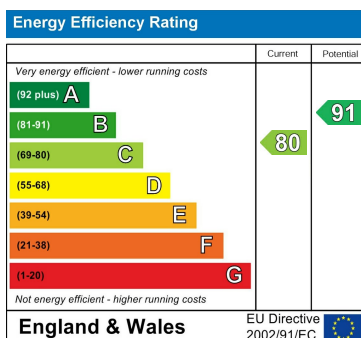
Predictive Energy Assessment Rating - 82

W - Wardrobe C - Cupboard A/C - Airing Cupboard
* Handed to plot shown

Council Tax Band

C

Energy Performance Graph



Call us on

01638 551551

enquiries@lodge-lettings.co.uk

www.lodge-lettings.co.uk

Agents Note: Whilst every care has been taken to prepare these particulars, they are for guidance purposes only. All measurements are approximate and are for general guidance purposes only and whilst every care has been taken to ensure their accuracy, they should not be relied upon and potential buyers are advised to recheck the measurements.