



Matilda House

St. Katharines Way, E1W

£1,950 per month
(£450 per week)

NO SHARERS. A fantastic 2 double bedroom apartment arranged on the 2nd floor of this purpose built block which is ideally located moments from St. Katharine Docks, the historical streets of Wapping and Tower Hill underground station.



Matilda House

St. Katharines Way, E1W

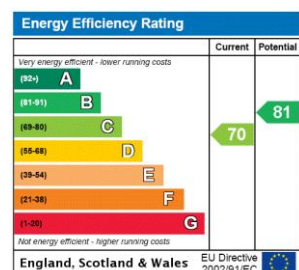
- 2 Double Bedrooms
- Living and Dining Area
- Wood Floors
- Close to St Katharine Docks



A fantastic 2 double bedroom apartment arranged on the 2nd floor of this purpose built block which is ideally located moments from St. Katharine Docks many restaurants and pubs and Tower Hill underground station.

St. Katharine Docks is Central London's only marina, a truly unique location set north side of the River Thames alongside the iconic landmark, Tower Bridge. The area boasts a variety of bars and restaurants surrounding the dock as well as stunning views of The Shard. Whilst residents can easily walk to The City, the area is well connected with excellent transport links via Tower Hill, Tower Gateway and Fenchurch Street stations.

Minimum Term: months
Deposit Required: £2,250.00
Local Authority:
Council Tax Band:
EPC Rating: C
Furnished

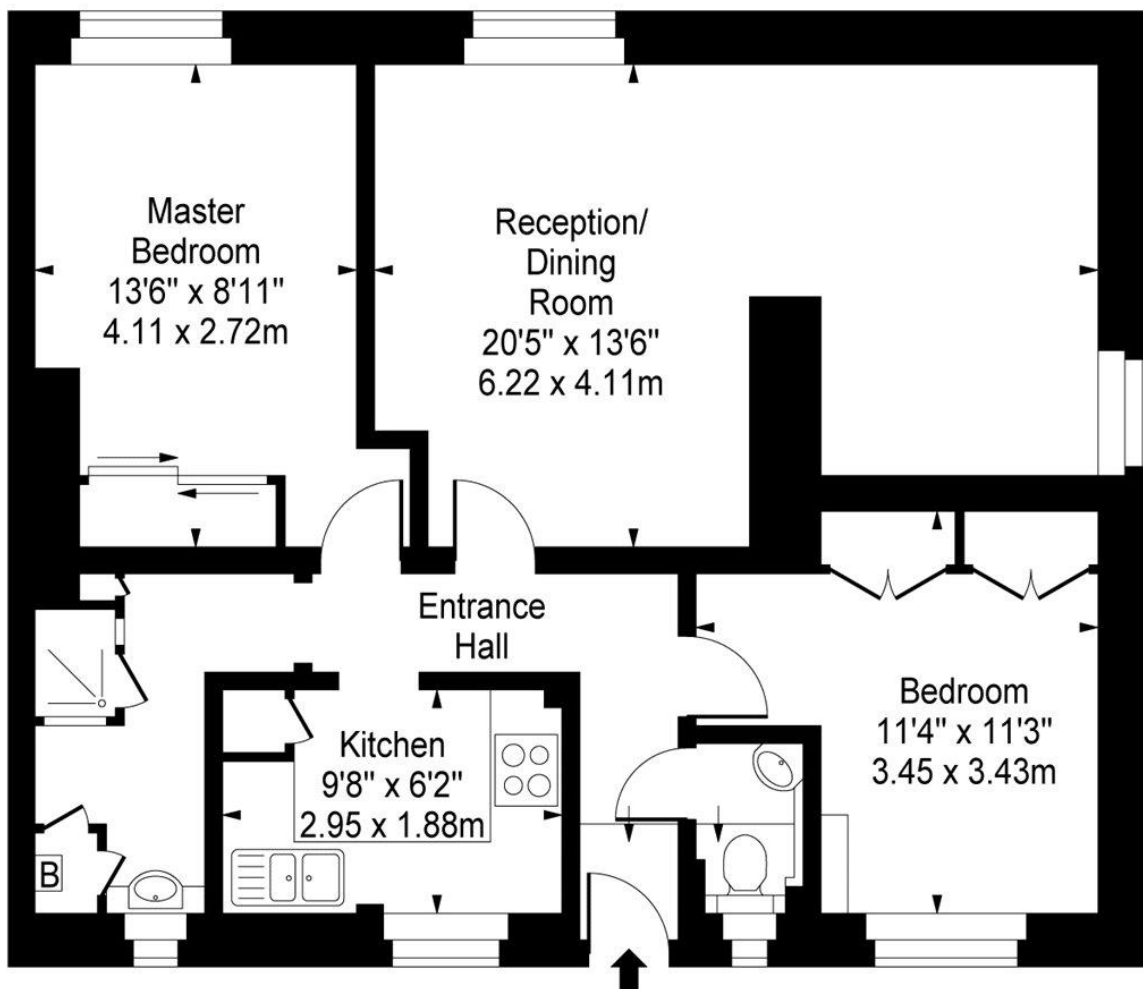
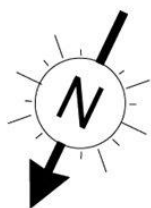


Chestertons Tower Bridge Lettings

220 Tower Bridge Road
 Tower Bridge
 London
 SE1 2UP
 lettings.towerbridge@chestertons.com
 02073576911
 chestertons.com

Additional tenant charges apply (fees apply to non-AST tenancies only)
 Tenancy Agreement Fee: £300
 References per Tenant/Guarantor: £60
 Inventory check (approx. £100 – £250 inc. VAT)
 chestertons.com/property-to-rent/applicable-fees

Matilda House, St. Katharine's Way, E1W



Second Floor

Approx Gross Internal Area **707 Sq Ft - 65.68 Sq M**

For Illustration Purposes Only - Not To Scale

www.goldlens.co.uk

Ref. No. 009000M

