



Guide Price
£325,000

Freehold

3x  1x  2x 

**Sherbrooke Close,
Worthing, West Sussex,
BN13**

OVER 60?

Secure this property
for up to **59% less!**

cubitt & west
Helping you move forwards

Awaiting
photo



Main features

- Beautifully presented family home
- Off-street parking for two cars
- Spacious conservatory
- Very large and sunny wrap around garden
- Scope to extend (subject to planning permissions)

Accommodation

GROUND FLOOR

Entrance Hall

Lounge / Diner: 25'11 x 7'5 (7.90m x 2.26m)

Kitchen: 11'1 x 7'1 (3.38m x 2.16m)

Conservatory: 13'7 x 11'9 (4.14m x 3.58m)

FIRST FLOOR

Landing

Bedroom 1: 10'2 x 8'2 (3.10m x 2.49m)

Bedroom 2: 9'3 x 8'2 (2.82m x 2.49m)

Bedroom 3: 10'8 x 5'11 (3.25m x 1.80m)

Bathroom

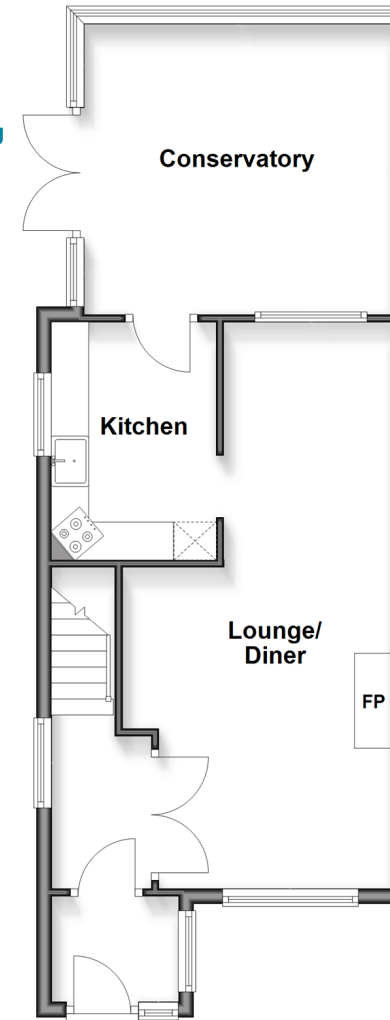
OUTSIDE

Driveway Parking

Large Rear Garden

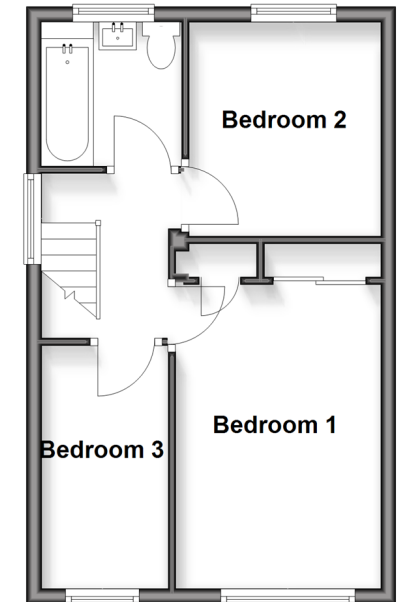
Ground Floor

Approx. 52.7 sq. metres (566.8 sq. feet)



First Floor

Approx. 34.0 sq. metres (365.7 sq. feet)



Call Worthing - 01903 700657 ■ cubittandwest.co.uk

- Legal advice should be taken to verify fixtures/fittings, planning, alterations and/or lease details
- Appliances & services are untested, dimensions are approximate and floor plans are not to scale
- Through a Homewise Home For Life Plan people aged 60+ can secure this property for up to 59% less, by purchasing a Lifetime Lease



40807316/20260227/ES/OM