

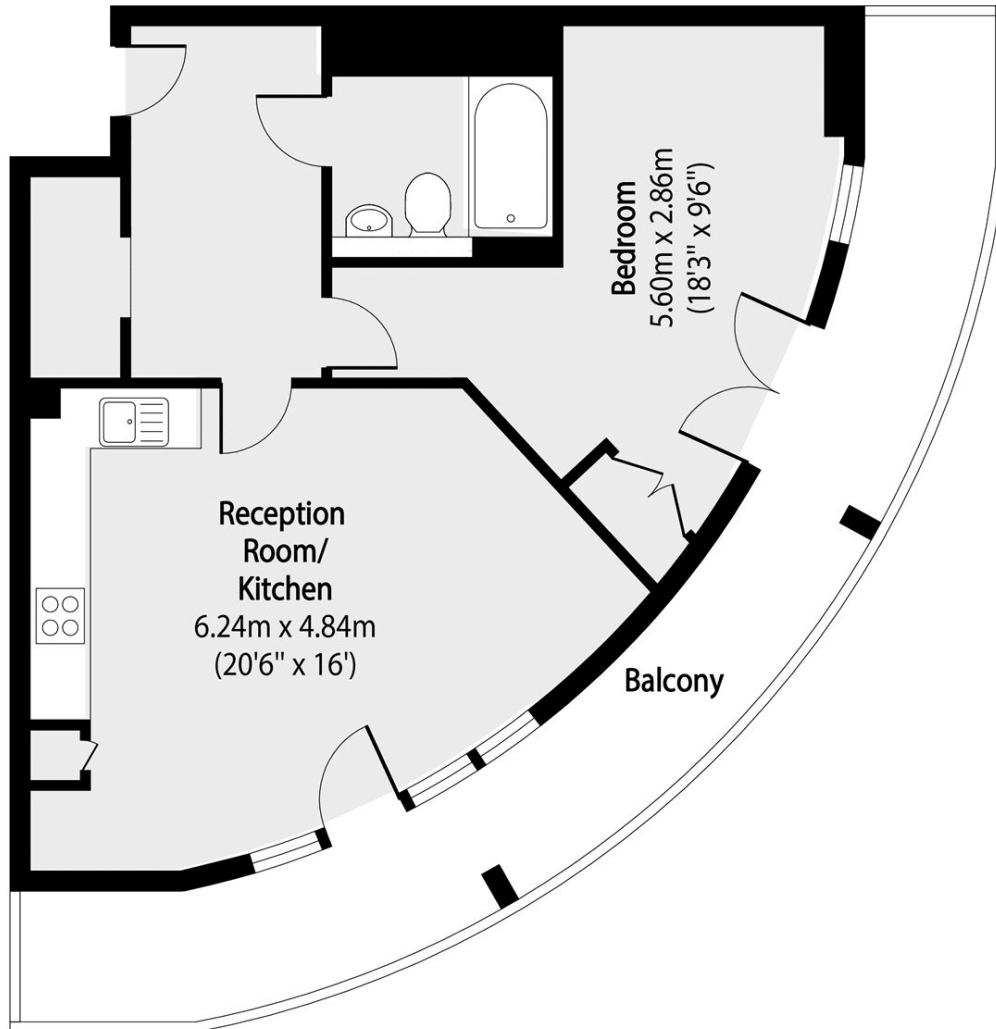


## QUADRANT WALK, E14

**£400,000**

A sixth floor, one bedroom apartment in a central Canary Wharf location. This property provides a bright, open plan kitchen/living area with double doors onto the private, wrap around balcony, a good sized double bedroom and a family bathroom.

- One Double Bedroom
- Private Balcony
- 24hr Concierge
- Gym
- Modern Design
- Built In Storage



Total area (approx): 52.89 sq m (569 sq. ft)

Balcony total area (approx): 19.57 sq m (210 sq. ft)

**LiFE RESIDENTIAL**

36 Millharbour, London, E14

9JS

Sales: 020 3668 1033

Lettings: 020 3668 1030

Energy Rating: B. We aim to make our particulars both accurate and reliable. However they are not guaranteed; nor do they form part of an offer or contract. If you require clarification on any points then please contact us, especially if you're traveling some distance to view. Please note that appliances and heating systems have not been tested and therefore no warranties can be given as to their good working order.