



## THE TERRACE, SW13

£485,000

One bedroom apartment  
Stylishly presented  
Prestigious mansion block  
Well managed with onsite porter  
Minutes from Barnes Bridge  
Barnes Village

@marshandparsons  
marshandparsons.co.uk

MARSH &  
PARSONS



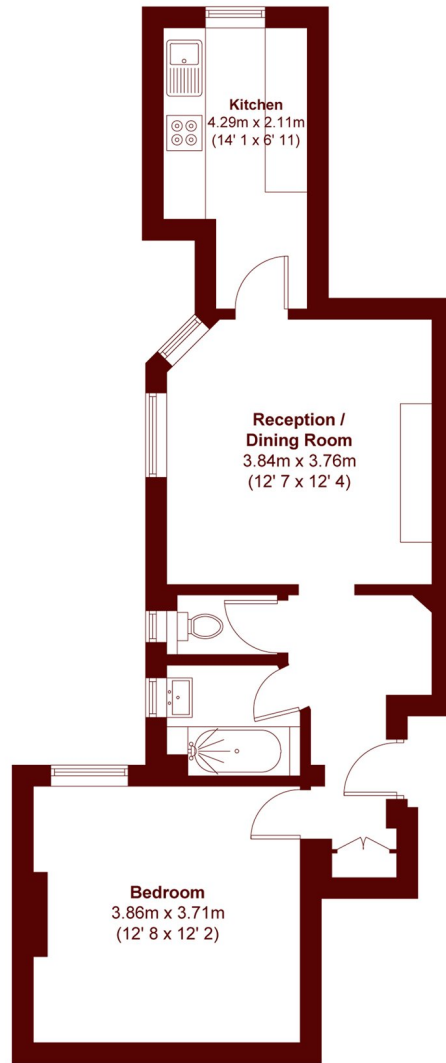
# ABOUT THE PROPERTY

Marsh & Parsons after recent success in this prestigious Edwardian Mansion block are thrilled to be marketing this one bedroom ground floor apartment neatly situated next to the River Thames and Barnes Bridge.

The property comprises a spacious entrance hall, a modern galley kitchen, bathroom, a large double bedroom, and a charming bay fronted reception room. The property is enhanced by many period features - including high ceilings and sash windows. The flat further benefits from ample storage throughout, a long lease with a share of the freehold.



# STEP INSIDE THE TERRACE



Ground Floor

APPROX. GROSS INTERNAL FLOOR AREA  
544 SQFT / 50.5 SQM

**Barnes & East Sheen**  
020 8563 8333

Energy Rating: D We aim to make our particulars both accurate and reliable. However, they are not guaranteed; nor do they form part of an offer or contract. If you require clarification on any points then please contact us, especially if you're traveling some distance to view. Please note that appliances and heating systems have not been tested and therefore no warranties can be given as to their good working order

**MARSH &  
PARSONS**