



Stoneacre
Properties



Cranewells Rise, Leeds, LS15 9HE
Offers Over £225,000

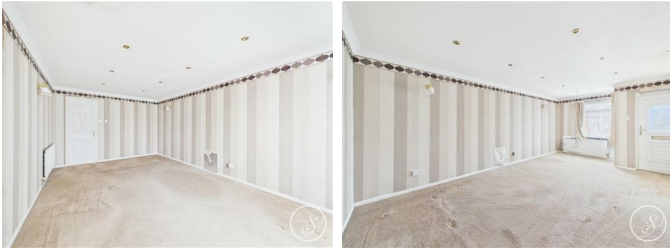
Stoneacre Properties are delighted to offer for sale with no chain this two bedroom semi detached bungalow. This lovely home is situated in Colton village and boasts a wonderful position with woodland to the rear. Colton village offers easy access to a wide range of amenities including shops and transport links. Comprising: kitchen, lounge, two bedrooms and a bathroom. Externally there are gardens to the front and rear. In addition there is also a garage. Early viewings are highly recommended.

Kitchen



Range of wall and base units. Integrated oven with electric hob and extractor fan above. Plumbing for washing machine and dish washer. Double glazed window to the front elevation.

Lounge



Double glazed window to the front elevation. Central heating radiator.

Inner Hall

Door to the side elevation.

Bedroom One



French doors to the rear elevation. Central heating radiator. Fitted wardrobes.

Bedroom Two



Double glazed window to the rear elevation. Fitted wardrobes. Central heating radiator.

Bathroom



Double glazed frosted window. Low flush w.c. Wash hand basin. Central heating radiator.

External



Low maintenance rear garden with patio area. Driveway to the front elevation.

Garage

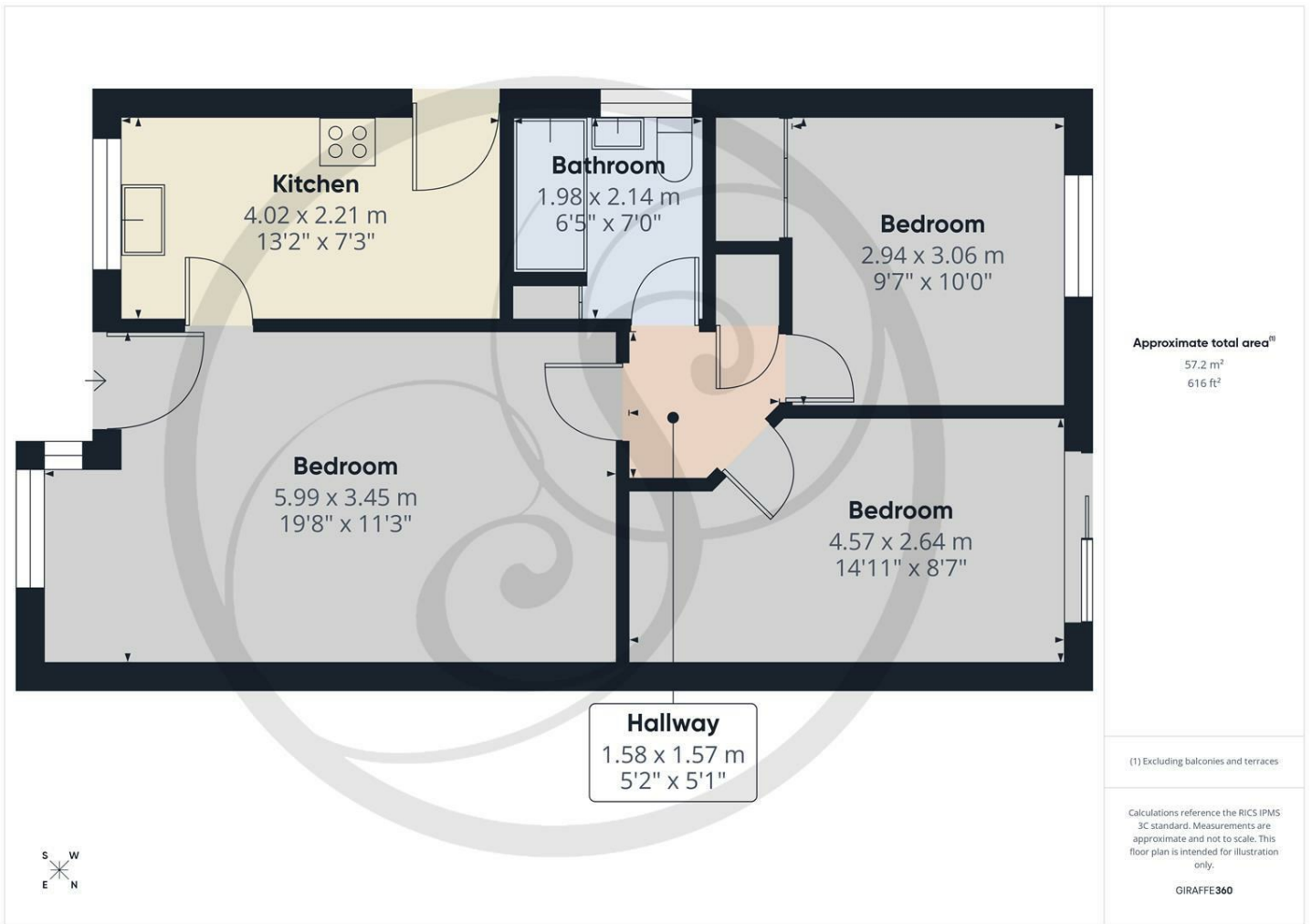


Up and over door.

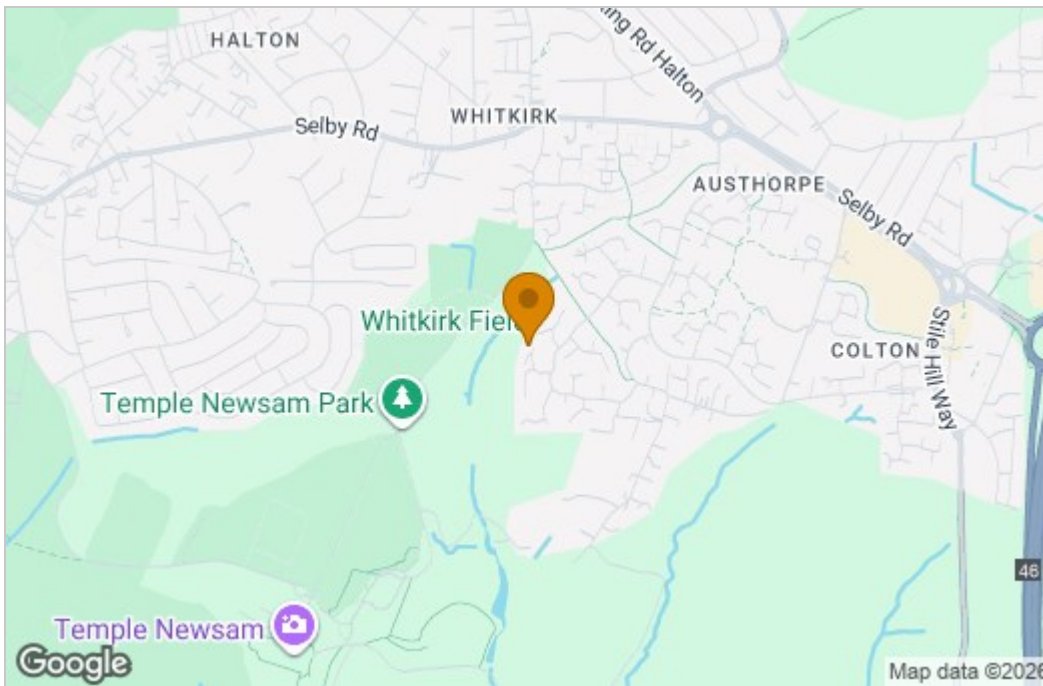
AGENT NOTE

Under the terms of the Estate Agency Act 1979 (section 21) please note that the vendor of this property is a relative of a Stoneacre Properties employee.

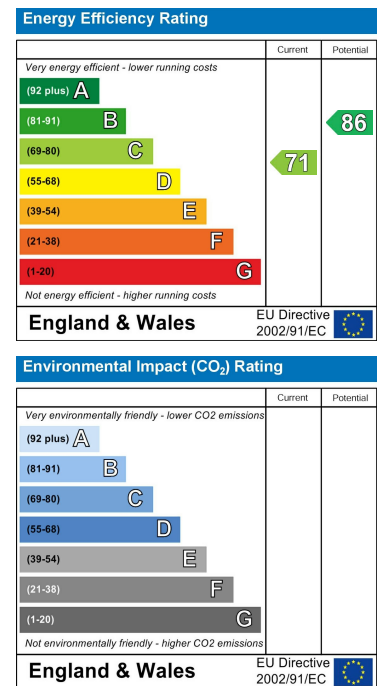
Floor Plan



Area Map



Energy Efficiency Graph



These particulars, whilst believed to be accurate are set out as a general outline only for guidance and do not constitute any part of an offer or contract. Intending purchasers should not rely on them as statements of representation of fact, but must satisfy themselves by inspection or otherwise as to their accuracy. No person in this firm's employment has the authority to make or give any representation or warranty in respect of the property.

