



Welford Close, Coleview, Swindon, SN3 4AU

£345,000
(Subject to Contract)

Hanley's

Welford Close Coleview Swindon SN3 4AU

A beautifully presented two bedroom detached bungalow which has been improved by the current owner. The well appointed property comprises: entrance hall with storage cupboard, access via a drop down wooden ladder to a large loft area with light and gas fired boiler, living room/dining room, stylishly fitted kitchen with integrated double oven, gas hob with extractor hood over, fridge and freezer, two bedrooms; main bedroom with door to the garden and bathroom with shower over the bath. Outside to the front is a block paved driveway and gated access to the rear garden. To the side a further driveway leads to the single garage with power and light. To the rear is a good size enclosed private rear garden which has been attractively landscaped with raised decking area, paved patio, stone chippings and shaped lawn with attractive and well stocked flower borders. Personal access to the garage and large timber garden shed.



1 Bathroom



2 Bedrooms



1 Reception

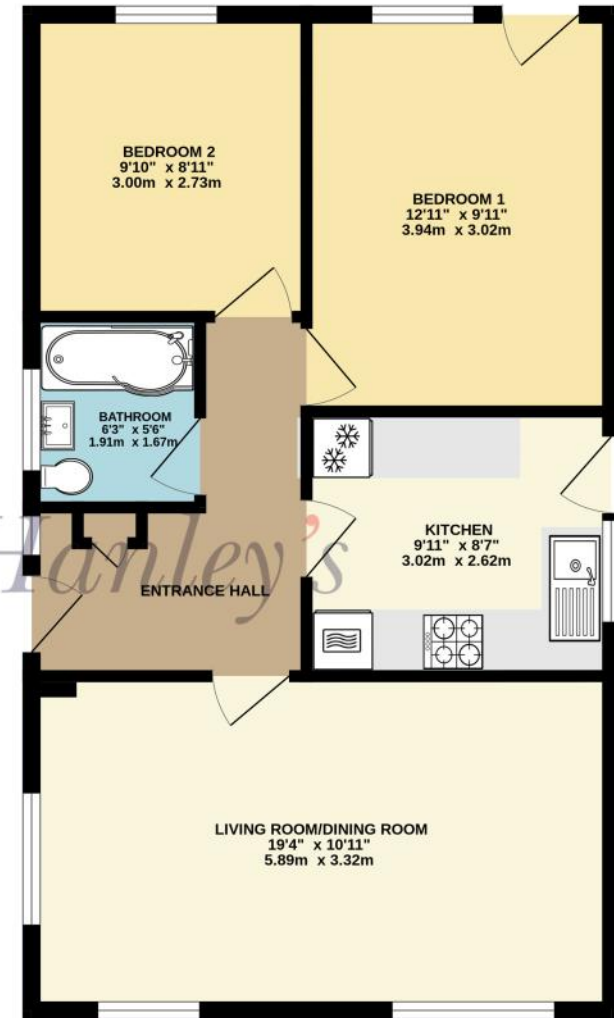
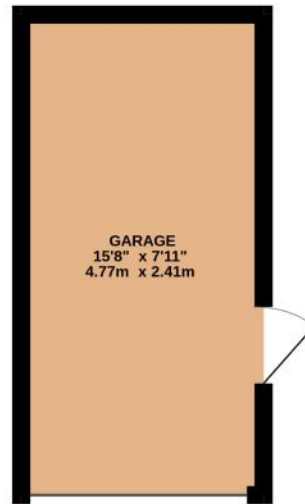
EPC: D 66

Council Tax Band: D

Tenure: Freehold



DISCLAIMER. These particulars, whilst believed to be accurate are set out as a general outline for guidance and do not constitute any part of an offer or contract. Intending purchasers should not rely on them as statements or representation of fact, but must satisfy themselves by inspection or otherwise as to their accuracy. No person in this firm's employment has the authority to make or give any representation or warranty in respect of the property. Floor plan measurements and distances are approximate only. We have not carried out a detailed survey nor tested the services, appliances or specific fittings. Your home is at risk if you do not keep up repayments on a mortgage or other loan secured on it.



TOTAL FLOOR AREA: 735 sq.ft. (68.3 sq.m.) approx.

Whilst every attempt has been made to ensure the accuracy of the floorplan contained here, measurements of doors, windows, rooms and any other items are approximate and no responsibility is taken for any error, omission or mis-statement. This plan is for illustrative purposes only and should be used as such by any prospective purchaser. The services, systems and appliances shown have not been tested and no guarantee as to their operability or efficiency can be given.
Made with Metropix ©2026

Hanley's Estate Agents
25 High Street, Highworth, SN6 7AG
Tel: 01793 762005 mail@hanleys.co.uk

