



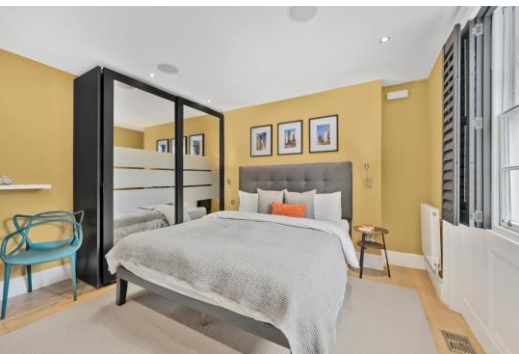
Wellington Street

London, WC2E

Asking Price £1,300,000

Stunning two-bedroom period apartment in prime Covent Garden. Nearly 1,000 sq. ft with bespoke kitchen, Miele appliances, wood floors & sash windows. Opposite Lyceum Theatre, steps from Opera House

CHESTERTONS



Wellington Street

London, WC2E

- Third Floor Walk up
- The property is near the popular Covent Garden piazza, famous for its trendy shops, world class theatre and dining
- Covent Garden Underground Station is close by as are numerous transport links
- Bright and airy throughout
- Modern and well equipped flat



Discover this exceptional two-bedroom apartment on the third floor of a distinguished period building, offering nearly 1,000 square feet of sophisticated living space in London's most vibrant cultural quarter.

Interior Excellence

The bespoke kitchen showcases premium Miele, Gaggenau, and Smeg appliances, complemented by a wine fridge and elegant dining space. Throughout, rich wood flooring creates warmth and continuity, while the dual-aspect reception room features built-in ceiling speakers, a gas fireplace, and original sash windows with shutters. A dedicated work-from-home area caters to modern living needs.

Tenure: Leasehold 976 years 9 months

Service Charge: £3500

Ground Rent: £0

Local Authority: Westminster

Council Tax Band: G

| Score | Energy rating | Current | Potential |
|-------|---------------|---------|-----------|
| 92+ | A | | |
| 81-91 | B | | |
| 69-80 | C | | 76 C |
| 55-68 | D | | |
| 39-54 | E | 48 E | |
| 21-38 | F | | |
| 1-20 | G | | |

Chestertons Covent Garden Sales

196 Shaftesbury Avenue

London

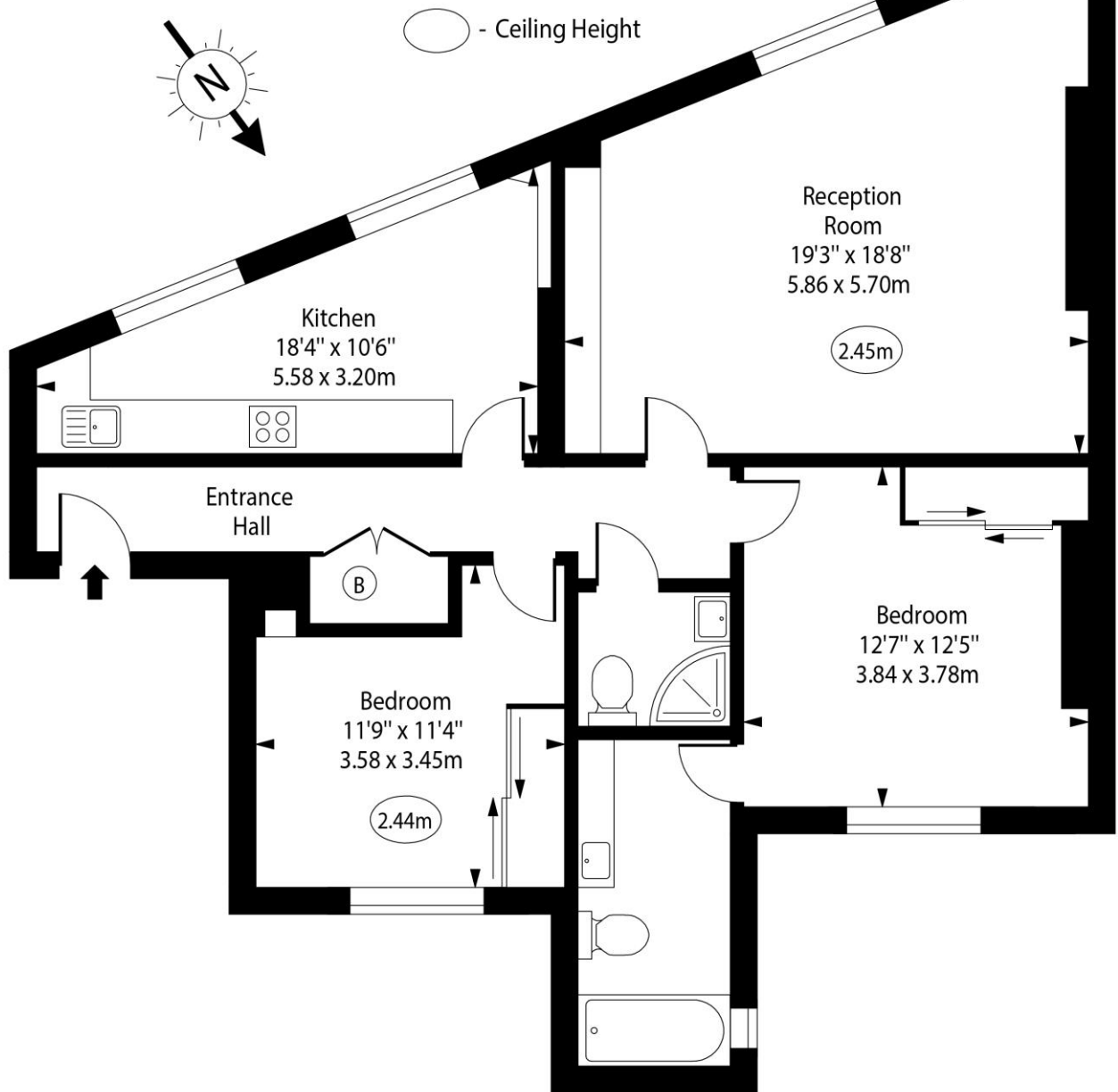
WC2H 8JF

coventgarden@chestertons.co.uk

020 3040 8300

chestertons.co.uk

Wellington Street



Third Floor

Approx Gross Internal Area 970 Sq Ft - 90.11 Sq M

For Illustration Purposes Only - Not To Scale