



*Shirland Road, W9 2EP*  
*£2,750 Per Month*



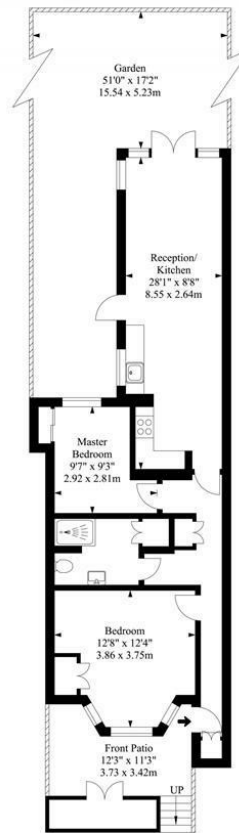


2 x  1 x  1 x 

This lovely refurbished two double bedroom garden flat is set within a Victorian terrace on Shirland Road. The accommodation comprises two double bedrooms, contemporary bathroom, and a large 28.1ft x 8.8ft reception room with open plan integrated kitchen opening onto a substantial 51ft private garden, providing great entertaining space. The garden is very sunny and bright with mature planting and a large patio area. Benefits include own private entrance, a large locked storage space situated externally which belongs to the flat. Newly refurbished kitchen, bathroom and wooden flooring,, newly refurbished wooden flooring, proximity to Paddington Recreation Ground, and a short walk to the canals of Little Venice with its cafes and bars. Available now. unfurnished. Pet friendly.



Shirland Road, W9  
Approx. Gross Internal Area  
688 Ft<sup>2</sup> - 63.92 M<sup>2</sup>



**Basement Flat**

Illustration For Identification Purposes Only. Not To Scale

**Important Notice** Debussy Property Service Ltd trading as Braithwait for themselves and for the vendor of this property whose agents they are, give notice that (i) these particulars do not constitute any part of an offer or contract, (ii) all statements contained within these particulars are made without responsibility on the part of Braithwait or the vendor, (iii) whilst none in good faith, none of the statements contained within these particulars are to be relied upon as a statement of representation or fact, (iv) any intending purchaser must satisfy him/herself by inspection or otherwise as to the correctness of each of the statements contained within these particulars, (v) the vendor does not make or give either Braithwait or any person within their employment any authority to make or give any representation or warranty whatsoever in relation to this property. Wide angled lenses may be used in photographs.

Call us on 0207 289 8889 or email [sales@braithwait.co.uk](mailto:sales@braithwait.co.uk)

