



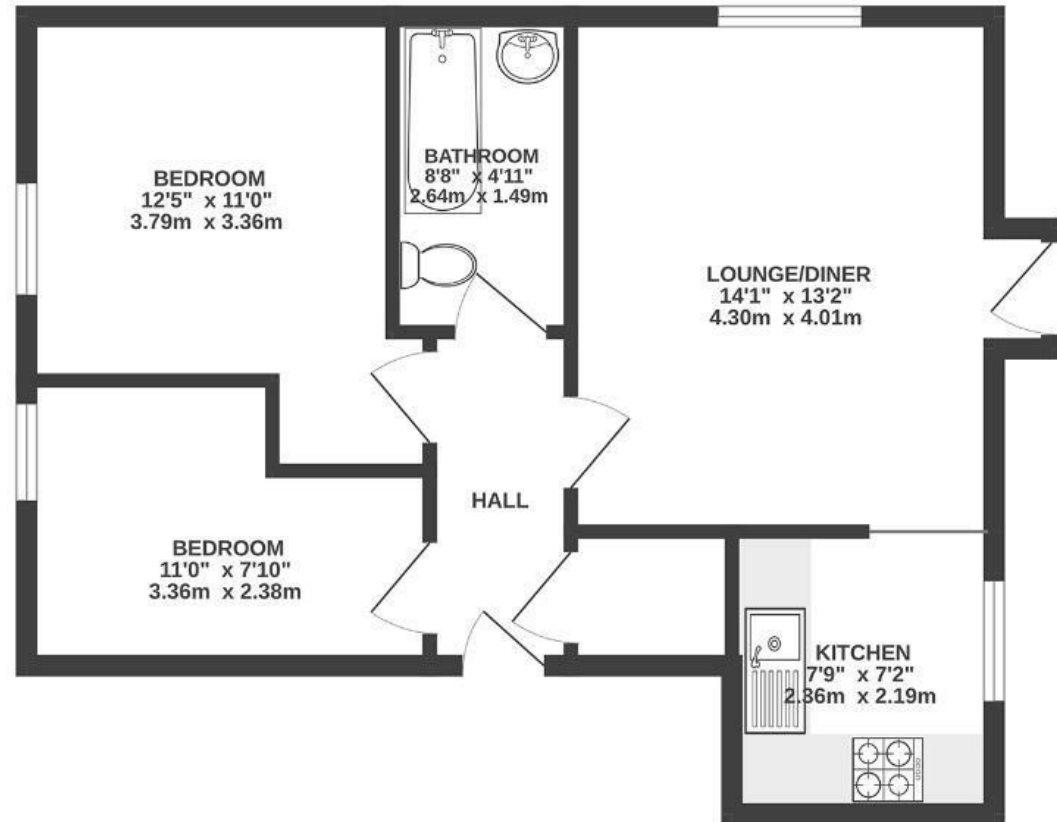
St. Clements Court

ST. PAULS

APPROXIMATE FLOOR AREA
47 SQM / 506 SQFT



GROUND FLOOR



Boardwalk

Wilson Street

, BRISTOL



£200,000



2 Bedrooms



BS2 9HA



1 Bathrooms

"I've always loved the location of this flat. I'm just a stone's throw from Farro, close to great cafés on Stokes Croft like The Crafty Egg, and right by the buzz of Gloucester Road. Being near Cabot Circus and the city centre makes everything easy, and it's perfectly placed between North and South - I've never had to choose between the two."

