



Connells

The Priory Syresham Gardens
Haywards Heath

The Priory Syresham Gardens Haywards Heath RH16 3XB

for sale guide price
£270,000



Property Description

Set within the highly sought after Priory development, this attractive two-bedroom apartment blends period character with contemporary comfort. Originally dating back to the 1890s and thoughtfully converted around 2020, the building retains its historic charm while offering modern, stylish living throughout.

The apartment features an open plan living, dining, and kitchen space, enhanced by striking feature windows that fill the room with natural light. The modern kitchen is beautifully appointed with integrated appliances and contrasting splashbacks, creating a sleek and functional hub for everyday living.

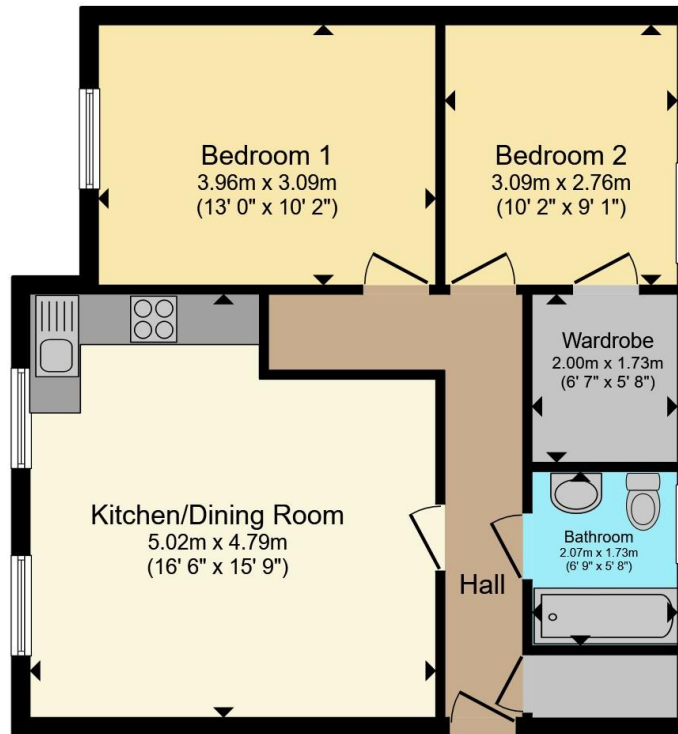
Both bedrooms are generous doubles, offering excellent proportions and versatility. The part tiled bathroom provides a fresh, modern finish, complete with a full-size bath and shower attachment.

The Priory enjoys a picturesque setting with beautifully maintained communal gardens. Residents also benefit from a private parking space, adding to the convenience of this superb location. With town centre amenities just a short distance away, this apartment offers the perfect balance of charm, comfort, and accessibility.









Total floor area 76.4 m² (822 sq.ft.) approx

This floor plan is for illustrative purposes only. It is not drawn to scale. Any measurements, floor areas (including any total floor area), openings and orientation are approximate. No details are guaranteed, they cannot be relied upon for any purpose and they do not form part of any agreement. No liability is taken for any error, omission or misstatement. A party must rely upon its own inspection(s). Powered by www.propertybox.io

Connells

To view this property please contact Connells on

T 01444 441 441
E haywardsheath@connells.co.uk

135 South Road
HAYWARDS HEATH RH16 4LY

EPC Rating: C

Council Tax
Band: B

Service Charge:
2100.00

Ground Rent:
240.00

Tenure: Leasehold

view this property online connells.co.uk/Property/HAY405581

This is a Leasehold property with details as follows; Term of Lease 125 years from 01 Jan 2019. Should you require further information please contact the branch. Please Note additional fees could be incurred for items such as

1. MONEY LAUNDERING REGULATIONS Intending purchasers will be asked to produce identification documentation at a later stage and we would ask for your co-operation in order that there will be no delay in agreeing the sale. 2. These particulars do not constitute part or all of an offer or contract. 3. The measurements indicated are supplied for guidance only and as such must be considered incorrect. Potential buyers are advised to recheck measurements before committing to any expense. 4. We have not tested any apparatus, equipment, fixtures, fittings or services and it is in the buyers interest to check the working condition of any appliances.

Connells Residential is registered in England and Wales under company number 1489613, Registered Office is Cumbria House, 16-20 Hockliffe Street, Leighton Buzzard, Bedfordshire, LU7 1GN. VAT Registration Number is 500 2481 05.



See all our properties at www.connells.co.uk | www.rightmove.co.uk | www.zoopla.co.uk

Property Ref: HAY405581 - 0004