

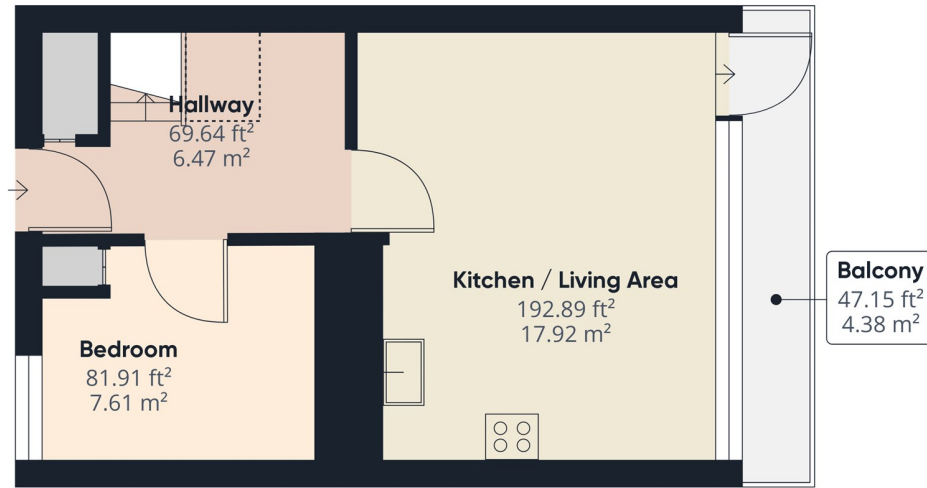


4 Bed
Flat
located in

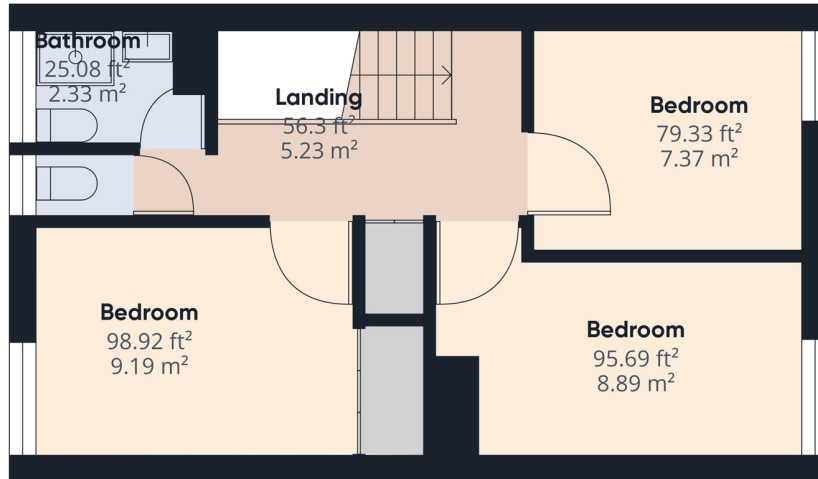
£3,100 Per Month



ROCKET



Floor 0



Floor 1



Approximate total area⁽¹⁾

739.27 ft²
68.68 m²

Balconies and terraces

47.15 ft²
4.38 m²

Reduced headroom

7.86 ft²
0.73 m²

(1) Excluding balconies and terraces

Reduced headroom

..... Below 5 ft/1.5 m

While every attempt has been made to ensure accuracy, all measurements are approximate, not to scale. This floor plan is for illustrative purposes only.

Calculations are based on RICS IPMS 3C standard.

GIRAFFE360

DIRECTIONS

CONTACT

265-269 Wimbledon Park Road
Southfields
London
SW19 6NW

E: info@rocketpm.co.uk
T: 02079594128

<https://www.rocketpm.co.uk/>

