



JULES MIDDLETON

exp[®] UK

@ jules.middleton@exp.uk.com

🌐 julesmiddleton.exp.uk.com

📞 07539 429 451

1, Overtrees Hollybush Lane,
Guide Price £315,000

🛏️ 2 🪑 1 🚗 1

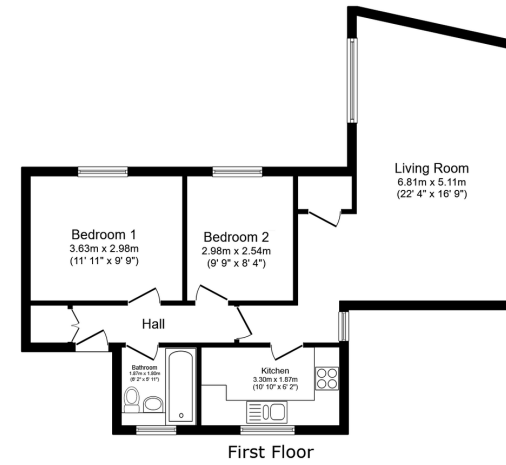


- First floor maisonette.
- Two bedrooms.
- Separate kitchen.
- Large Lounge.
- Single garage / large enough for a car.
- Communal garden.
- Share of freehold.
- Walking distance to Harpenden town centre.
- Walking distance to outstanding schools and mainline train station.
- Please quote JM0792 when enquiring.





A well presented first floor maisonette situated in a highly sought after location, within easy walking distance of the town centre, mainline train station, and highly regarded outstanding schools.



Total floor area: 55.3 sq.m. (595 sq.ft.)

This floor plan is for illustrative purposes only. It is not drawn to scale. Any measurements, floor areas (including any total floor area), openings and orientations are approximate. No details are guaranteed, they cannot be relied upon for any purpose and do not form any part of any agreement. No liability is taken for any error, omission or misstatement. A party must rely upon its own inspection(s). Powered by www.Propertybox.io

