

# OPEN HOUSE

SAT 21 FEB, 2026

11-3

COMMUNAL ADULT LIVING  
1 BED - 1 BATH

SAMANTHA  
MARSHALL

IAD ESTATE  
AGENCY

**iAD**  
ESTATE AGENTS

Wethered Road, Marlow, SL7

£220,000

iad UK

[www.iad.uk.com](http://www.iad.uk.com) |

**iAD**  
ESTATE AGENTS





Agent ref: SM01

Trinity Court in Marlow, Buckinghamshire is a housing complex specifically designed for adults aged 55+.

This chain-free first floor apartment comprises Entrance hall, Fitted Kitchen, Spacious Lounge, Double bedroom, Bathroom with walk in shower (refurbished in 2025) and balcony to enjoy the views.

It features central heating (boiler replaced in 2025), well maintained communal gardens, parking for residents and visitors. 24hr careline response system, House Manager, Visitors Guest suite and level walking grounds.

Facilities: The development offers several amenities for its residents, including an on-site manager, community rooms, laundry, beautifully kept communal gardens, and allocated and visitor parking. The apartments also benefit from a lift for access to upper floors.

Location and Access: It is located on Wethered Road in Marlow, which is an historic market town on the River Thames known for its attractive setting, suspension bridge, and mix of Georgian and Victorian architecture. The apartment is conveniently positioned within half a mile level walk of Marlow High Street.







 1

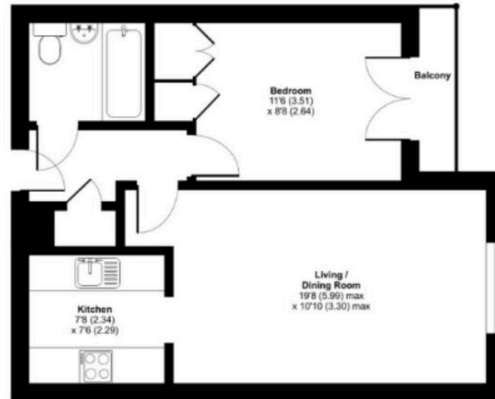
 1

 43 m2



Trinity Court, Marlow SL7

Approximate Area = 471 sq ft / 43.7 sq m  
For identification only - Not to scale



FIRST FLOOR

#### Energy Efficiency Rating

	Current	Potential
Very energy efficient - lower running costs		
(92+) <b>A</b>		
(81-91) <b>B</b>		
(69-80) <b>C</b>		
(55-68) <b>D</b>	62	71
(39-54) <b>E</b>		
(21-38) <b>F</b>		
(1-20) <b>G</b>		
Not energy efficient - higher running costs		
England, Scotland & Wales	EU Directive 2002/91/EC	

#### Environmental Impact (CO<sub>2</sub>) Rating

	Current	Potential
Very environmentally friendly - lower CO <sub>2</sub> emissions		
(92+) <b>A</b>		
(81-91) <b>B</b>		
(69-80) <b>C</b>		
(55-68) <b>D</b>	63	63
(39-54) <b>E</b>		
(21-38) <b>F</b>		
(1-20) <b>G</b>		
Not environmentally friendly - higher CO <sub>2</sub> emissions		
England, Scotland & Wales	EU Directive 2002/91/EC	



iad UK

50 Seymour Street, , London, England, , W1H 7JG

[www.iad.uk.com](http://www.iad.uk.com) |