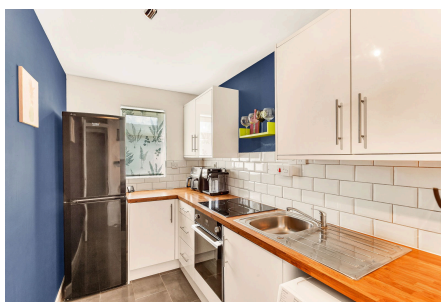


## Alburgh Close, Bedford, MK42

Offers Over £135,000

1 1 1



Urban Luxe Property are pleased to present this well-maintained, one-bedroom ground floor flat, offering comfortable living in a sought-after area of Bedford.

Upon entering the building, a communal entrance hall leads directly to where the flat is situated.

Inside you will find a spacious lounge/diner which is light and airy in feel.

Off here there is a modern kitchen which has been lovingly upgraded with electric fan oven and ceramic hob. Storage is aplenty and there is space for a fridge freezer and washing machine.

Across the way is a well equipped bathroom complete with a shower above the bath.

The bedroom is a generous size overlooking the rear of the building where you will find communal gardens.

The flat is situated in a well-established residential area called Eastcotts located to the south-east of Bedford Town Centre, known for its quiet neighbourhood feel, while still offering excellent access to local amenities and transport links. Popular with families, professionals and commuters Eastcotts combines suburban comfort with convenient proximity to the town.

## Key Features

- One double bedroom
- Spacious lounge/diner
- Modern kitchen
- Bathroom
- Communal gardens
- Allocated parking
- Close to amenities
- Close
- Unexpired lease term 166 years
- Monthly service charge: approx £40 pm

Approx total area - 38.65 m<sup>2</sup> / 415.78 sq ft



▲  
Ground floor

*This floorplan is provided as a guide to illustrate layout and should not be used for planning. Measurements are approximate and not to scale.*