



## Webster Road, SE16

£645,000

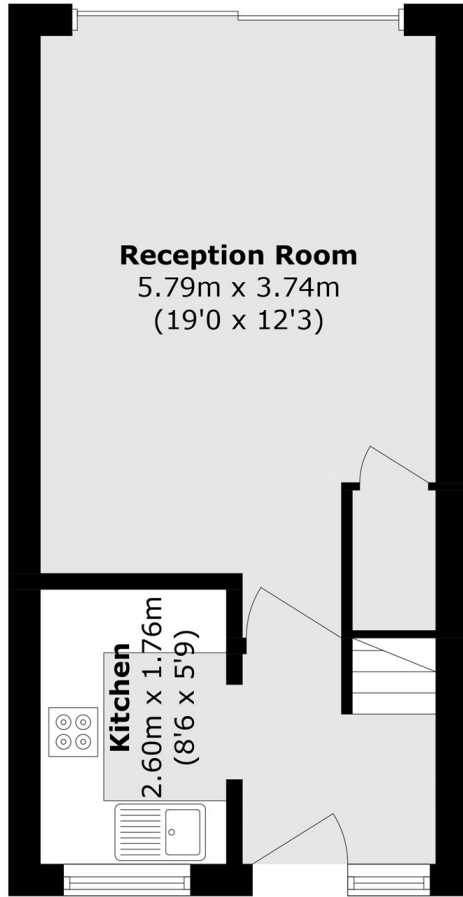
Located in the heart of Bermondsey, this two double bedroom freehold house is in stunning condition throughout and has a large living space, modern kitchen, private garden, ample storage and loft access.

Webster Road is located only 0.2 miles from Bermondsey station offering transport links to all of London. A wide range of shops, cafes, artisan delis are moments away along with Bermondsey Street and Maltby Street market.

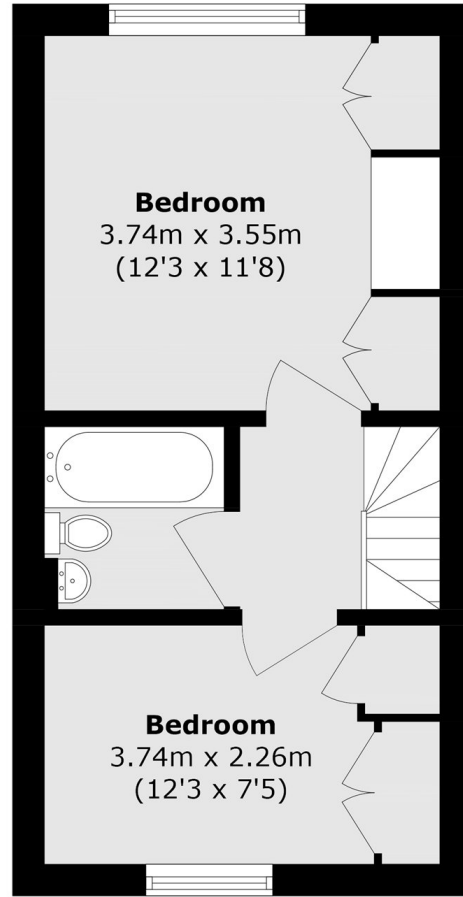
### Features

- Two Double Bedrooms
- Freehold House
- Fantastic Condition
- Chain Free
- Parking
- Large Private Garden

# Webster Road, London, SE16



**Ground Floor**



**First Floor**

Total area (approx.): 58.6 sq. m (630.8 sq. ft)