



Dartmouth Park Road

London, NW5

£1,500 pcm

*Video tour available. A spacious one bedroom apartment set over the second floor of an imposing period conversion in Dartmouth Park. Comprising; a large reception room, separate kitchen, good size double bedroom with built-in storage and a bathroom.



Dartmouth Park Road

London, NW5

- One Bedroom Second Floor Apartment
- Large Reception Room
- Separate Kitchen
- Double Bedroom With Built-in Storage
- Bathroom
- Period Conversion



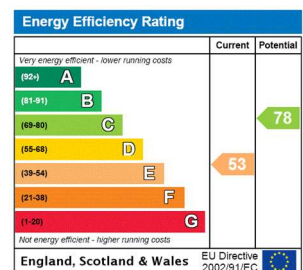
*Video tour available. A bright and spacious one bedroom apartment set over the second floor of an imposing period conversion set in the heart of Dartmouth Park. The property comprises; a large reception room, separate kitchen, good size double bedroom with built-in storage and a bathroom.

This charming property enjoys lots of natural light throughout and is offered on a furnished basis and available from the end of June.

Located on a quiet tree lined street within east reach of the open green spaces of Hampstead Heath whilst the many local amenities and transport links for both Tufnell Park and Kentish Town are close

Tenure: To be advised
Furnished, Part Furnished

Additional tenant charges apply (fees apply to non-AST tenancies only)
 Tenancy Agreement Fee: £300
 References per Tenant/Guarantor: £60
 Inventory check (approx. £100 – £250 inc. VAT)
[chestertons.com/property-to-rent/applicable-fees](https://www.chestertons.com/property-to-rent/applicable-fees)

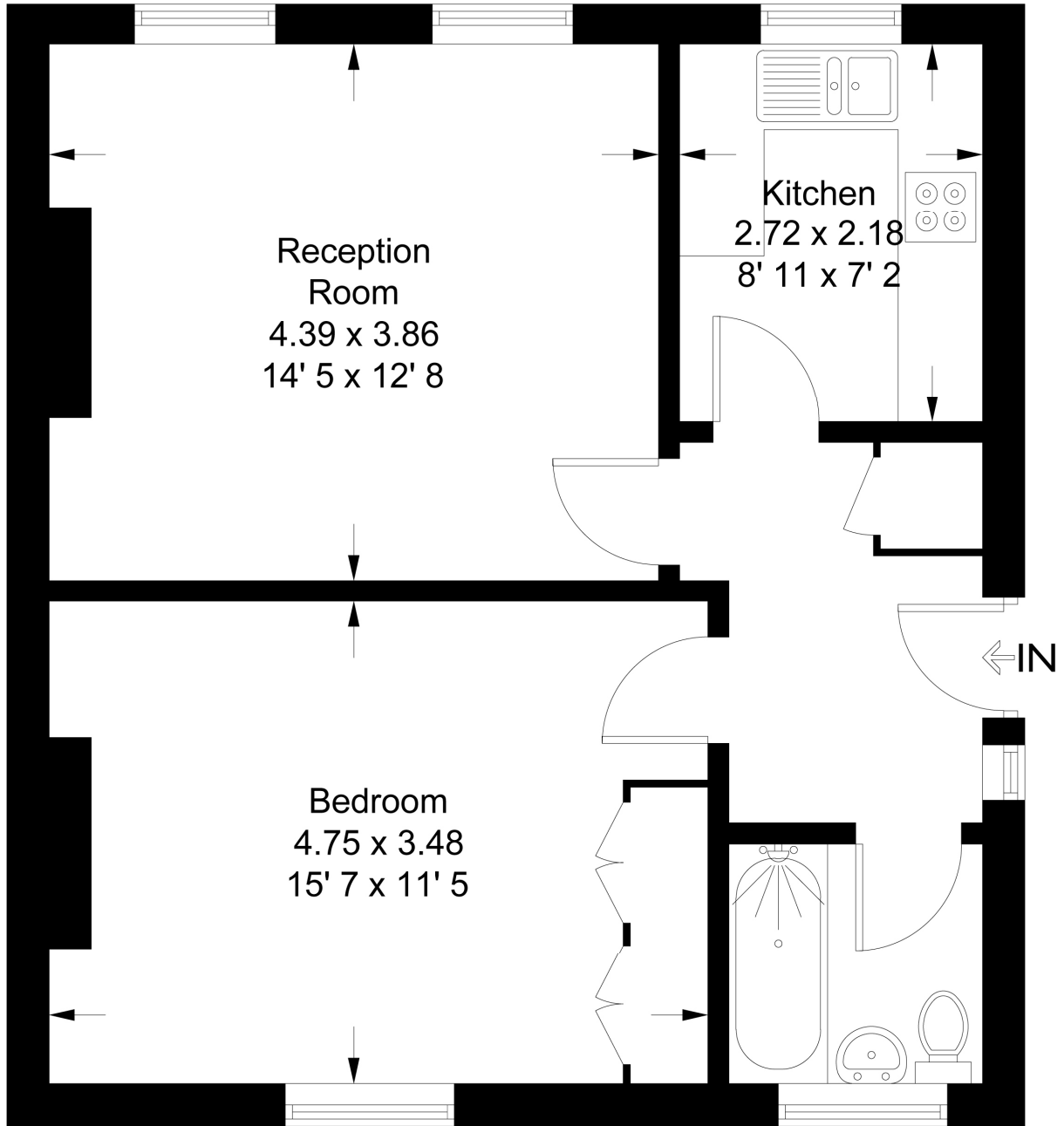


Chestertons Kentish Town Lettings

225 Kentish Town Road
 London
 NW5 2JU
lettings.kentishtown@chestertons.com
 02072671010
[chestertons.com](https://www.chestertons.com)

Dartmouth Park Road

Approximate Gross Internal Area = 544 sq ft / 50.6 sq m



Second Floor

This plan is not to scale and must be used as layout guidance only. All measurements and areas are approximate and should not be relied upon to provide accurate information. This plan must not be relied upon when making property valuations, design considerations or any other such relevant decisions. We accept no responsibility or liability (whether in contract, tort or otherwise) in relation to any loss whatsoever arising from or in connection with any use of this plan or the adequacy, accuracy or completeness of it or any information within it.