



Connells

Thompson Way
Streethay Lichfield

Thompson Way Streethay Lichfield WS13 8GD

for sale
£500,000



Property Description

****NO ONWARD CHAIN****

A wonderfully modern family home in a very popular location.

Internally, there are two reception rooms, the first is used as a dining room which has a bay window to the side and a further window to the front. The second, is a light and spacious living room with French doors out to the rear garden and a window to the front. There is a superb breakfast kitchen fitted with a range of units and granite work surfaces. The kitchen has space for a breakfast table, along with a window to the side and French doors out to the rear garden. Completing the ground floor accommodation is a downstairs guest cloakroom/wc and a hallway with a useful storage cupboard and stairs rising to the first floor:

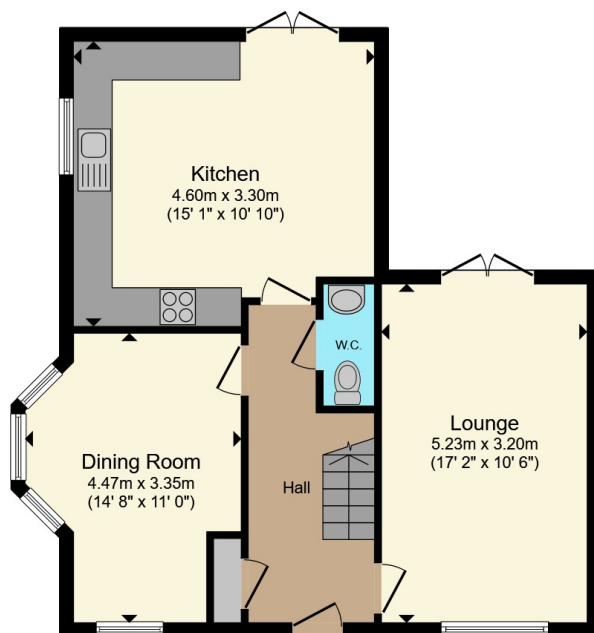
Upstairs, there are four bedrooms including a master bedroom with air conditioning and an en-suite shower room with a double shower enclosure. There are two further good-sized double bedrooms and a fourth bedroom currently used as a home office. The family bathroom is fitted with a three-piece suite including a bath with shower over. Externally, the rear garden has been designed with outdoor entertaining and low maintenance in mind. It enjoys plenty of space for outdoor seating. The property also benefits from having off-road parking for 2-3 cars in tandem, with a driveway and garage. The garage is floored and has power and lighting.

****A REAL MUST VISIT****

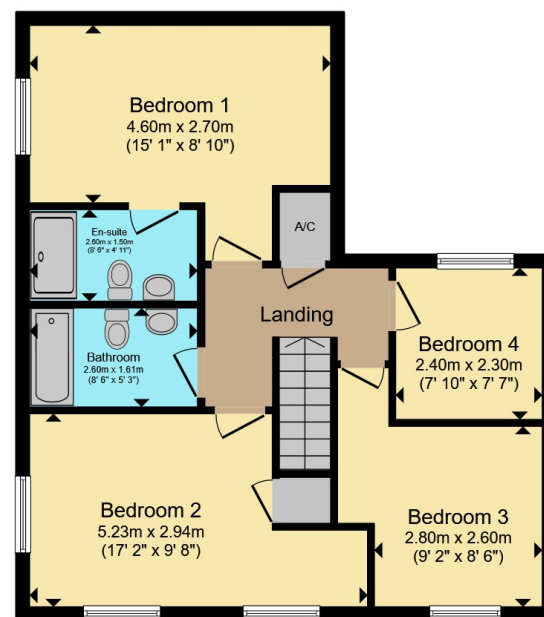








Ground Floor



First Floor

Total floor area 119.8 m² (1,290 sq.ft.) approx

This floor plan is for illustrative purposes only. It is not drawn to scale. Any measurements, floor areas (including any total floor area), openings and orientation are approximate. No details are guaranteed, they cannot be relied upon for any purpose and they do not form part of any agreement. No liability is taken for any error, omission or misstatement. A party must rely upon its own inspection(s). Powered by www.propertybox.io



To view this property please contact Connells on

T 01543 262 376
E lichfield@connells.co.uk

11 & 13 Bore Street
 LICHFIELD WS13 6LZ

EPC Rating: B Council Tax
 Band: F

Tenure: Freehold

view this property online connells.co.uk/Property/LFD312019



1. MONEY LAUNDERING REGULATIONS Intending purchasers will be asked to produce identification documentation at a later stage and we would ask for your co-operation in order that there will be no delay in agreeing the sale. 2. These particulars do not constitute part or all of an offer or contract. 3. The measurements indicated are supplied for guidance only and as such must be considered incorrect. Potential buyers are advised to recheck measurements before committing to any expense. 4. We have not tested any apparatus, equipment, fixtures, fittings or services and it is in the buyers interest to check the working condition of any appliances.

Connells Residential is registered in England and Wales under company number 1489613, Registered Office is Cumbria House, 16-20 Hockliffe Street, Leighton Buzzard, Bedfordshire, LU7 1GN. VAT Registration Number is 500 2481 05.

See all our properties at www.connells.co.uk | www.rightmove.co.uk | www.zoopla.co.uk

Property Ref: LFD312019 - 0002