



Regent Court

North Bank, St John's Wood, NW8 8UN

£600 Per Week

An extremely well presented one double bedroom apartment on the FIRST floor of this popular residential building, within 10 minutes walk from Baker Street and St John's Wood underground stations. Good bus routes along Park Road and Regent's Park is just a stone's throw away.

This fine flat comprises of:- Welcoming entrance hallway with storage, spacious reception/dining room with double door to private balcony overlooking rear garden (glimpse of Regent's Canal), smart semi open plan fitted kitchen. Large double bedroom with fitted wardrobes, window with rear garden view, newly fitted shower/wc . The property also benefits from having ceramic tiled flooring, south facing balcony, ample storage space, 24 hour porter, one allocated parking, lift access, in-house gym and communal gardens.

The flat is to be let furnished and will be available early JUNE.

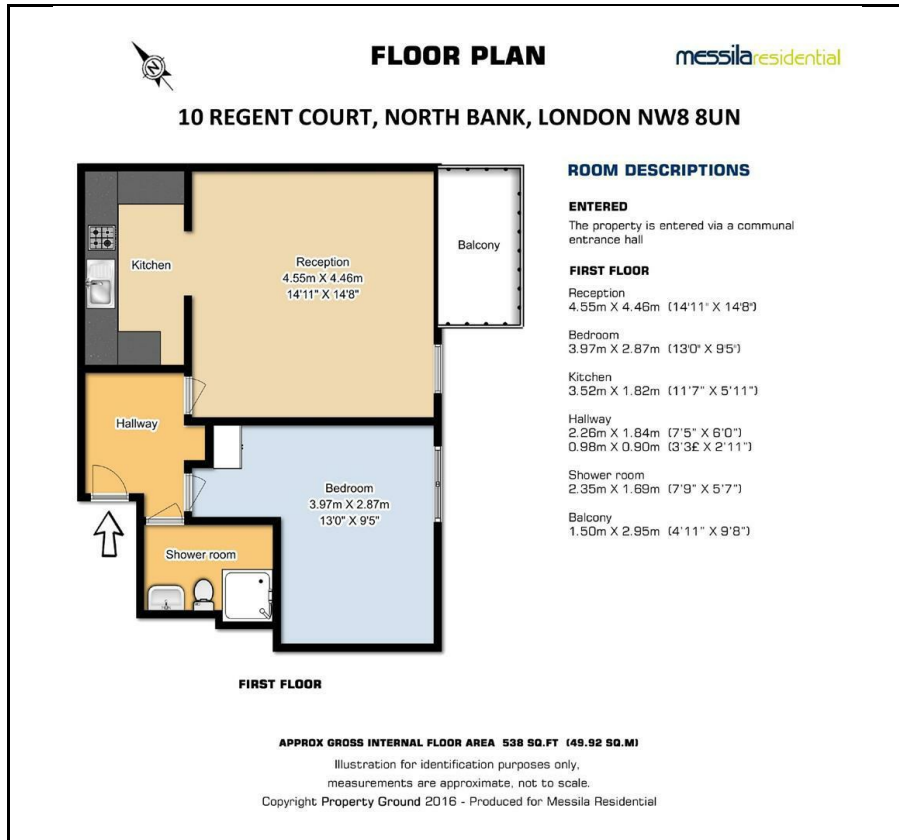
- One Double Bedroom
- First Floor
- Balcony
- 24 Hour Porter
- Parking Included

Viewing

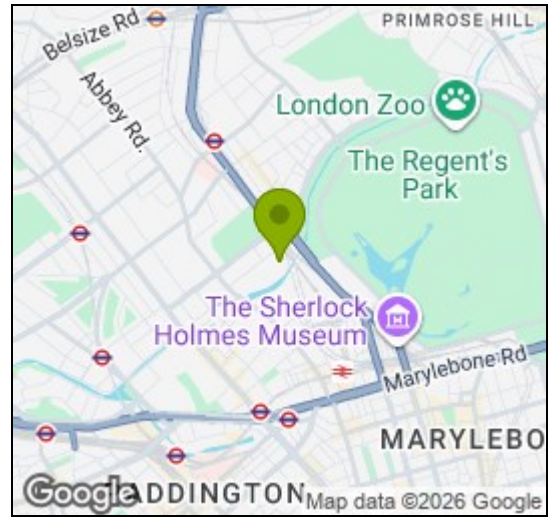
Please contact our Messila Residential Office on 020 7586 6699 if you wish to arrange a viewing appointment for this property or require further information.



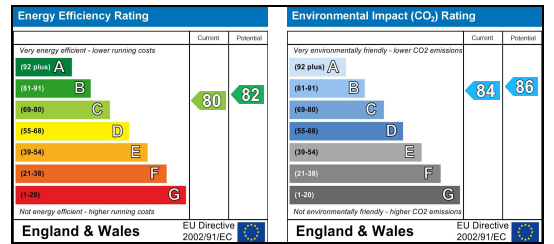
Floor Plan



Area Map



Energy Efficiency Graph



These particulars, whilst believed to be accurate are set out as a general outline only for guidance and do not constitute any part of an offer or contract. Intending purchasers should not rely on them as statements of representation of fact, but must satisfy themselves by inspection or otherwise as to their accuracy. No person in this firm's employment has the authority to make or give any representation or warranty in respect of the property.

Messila Residential

137 Park Road, London, NW8 7HT

T: 020 7586 6699 E regentspark@messilaresidential.com W: messilaresidential.com