



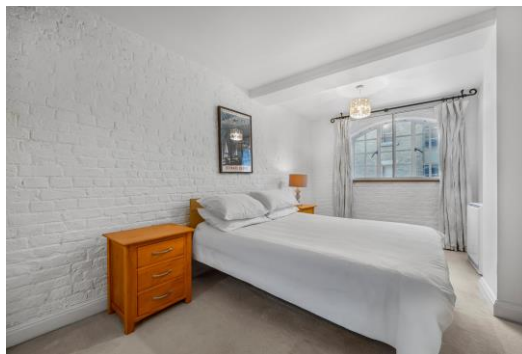
# St. Saviours Wharf

8 Shad Thames, SE1

Asking Price £485,000

A modern and well-presented 1 bedroom apartment on the 3rd floor of this sought after warehouse conversion in the heart of Shad Thames. The property boasts exposed brick work, wooden flooring, residents porter and underground parking.

**CHESTERTONS**



# St. Saviours Wharf

## 8 Shad Thames, SE1

- Warehouse Conversion
- One Bedroom Apartment
- Shad Thames Location
- 995 Years Remaining
- Private Balcony
- Underground Secure Parking
- Share of Freehold
- Day Time Porter
- Lift Access

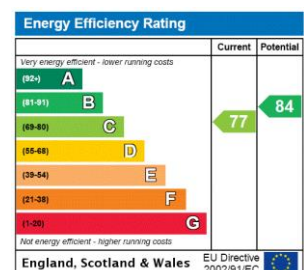


This beautiful one-bedroom apartment is located on the third floor of a highly sought-after warehouse conversion in the heart of Shad Thames and includes a secure underground car parking space. Full of character, the property features exposed brickwork and wooden flooring in the main living areas, with carpet in the bedroom for added comfort. Ample storage space and a large hallway add both practicality and style.

The separate kitchen is spacious and ideal for cooking, while large double doors open onto a small balcony where you can enjoy views of the vibrant neighbourhood. Residents benefit from a day-time porter service for added convenience and security.

The property has recently undergone extensive improvements. The lease has just been extended to 999 years in July 2025 and it is offered as a share of freehold, providing additional peace of mind.

**Tenure:** Share of Freehold 995 years 4 months  
**Service Charge:** £3486 pa  
**Ground Rent:** £37.5 pa  
**Local Authority:** London Borough of Southwark  
**Council Tax Band:** E

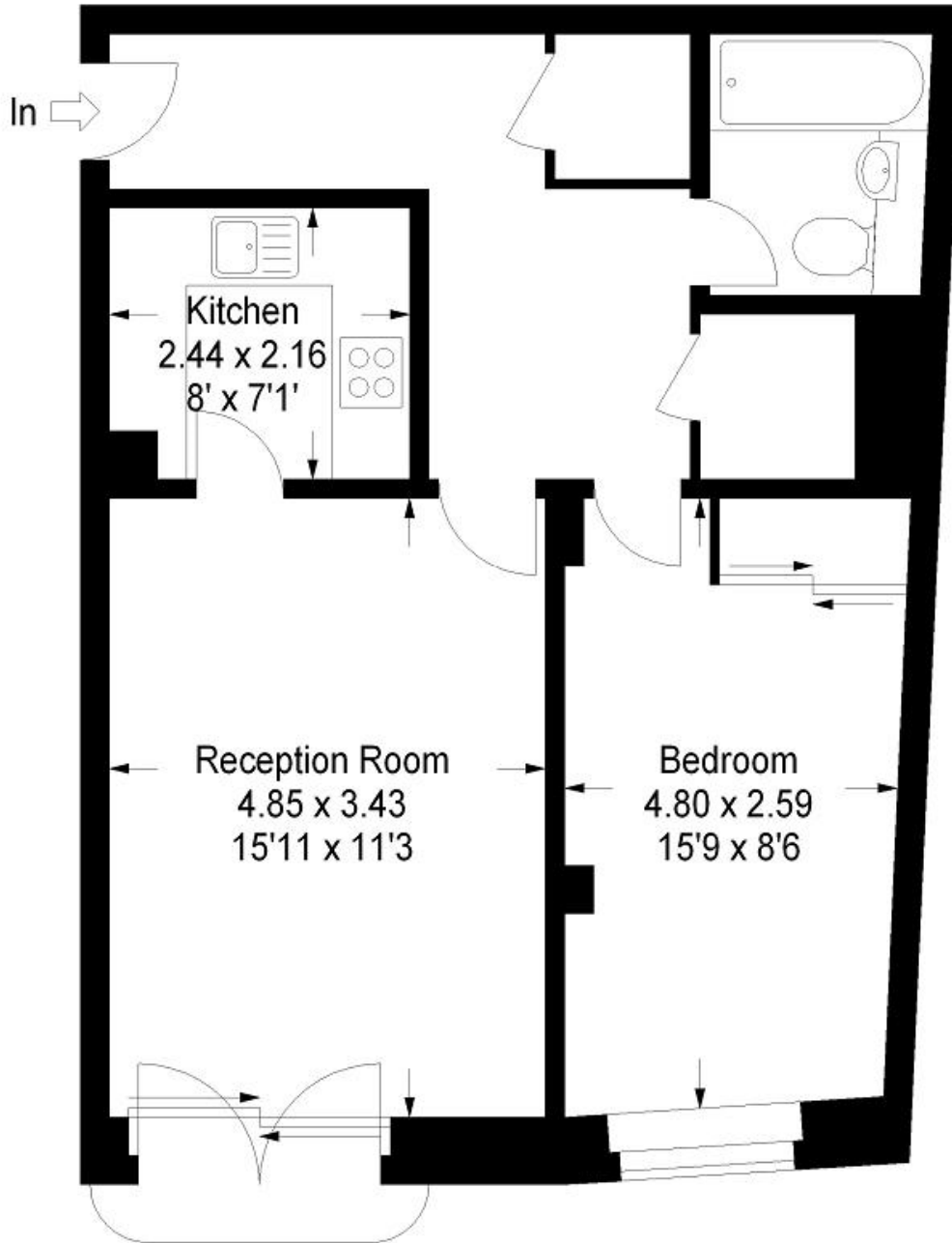


### Chestertons Tower Bridge Sales

220 Tower Bridge Road  
 Tower Bridge  
 London  
 SE1 2UP  
 towerbridge@chestertons.co.uk  
 020 7357 7999  
 chestertons.co.uk

# St. Saviours Wharf, SE1

Approx. Gross Internal Area : -  
53.42 sq m / 575 sq ft



## Third Floor

Illustration For Identification Purposes Only. Not to Scale

\* As Defined by RICS - Code of Measuring Practice

