



PRESTWICH TERRACE, SW4

£900,000

Freehold house
Three bedrooms
Abbeville Village
Residential Street
Close to Clapham Common
Energy rating: c

@marshandparsons
marshandparsons.co.uk

MARSH &
PARSONS



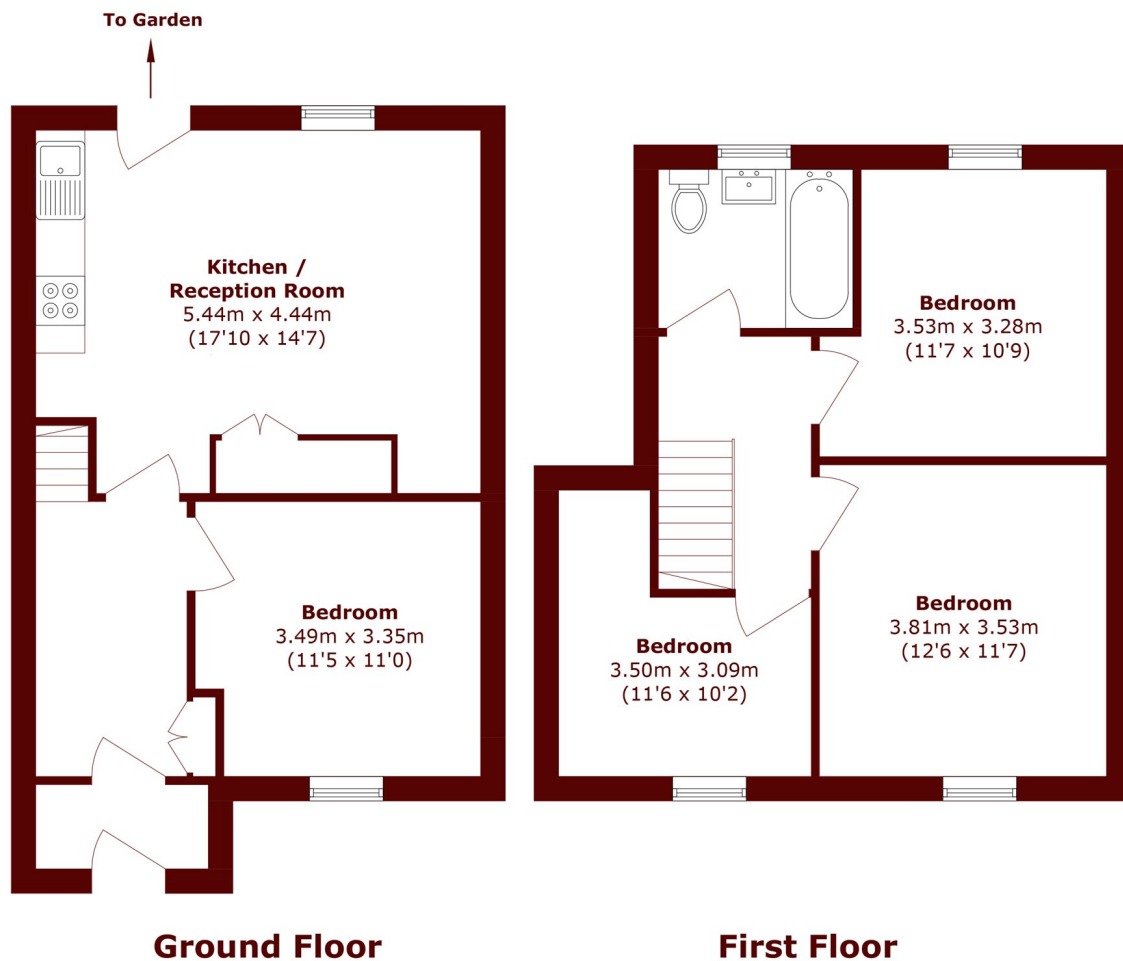
ABOUT THE PROPERTY

A well positioned three bedroom terraced house with private garden ideally located in the popular Abbeville village just moments from Clapham Common. Freehold & chain free.

This superb house benefits from a front porch leading through to a spacious hallway, a separate front reception room, and a rear kitchen/dining room with direct access to the garden, making it ideal for both entertaining and everyday family living. Upstairs offers three bedrooms and a family bathroom. Offering exceptional value for a house in this highly sought-after area, where many homes begin well in excess of £1,500,000



STEP INSIDE PRESTWICH TERRACE



Total area (approx.): 90.2 sq. m (970.9 sq. ft)

Clapham
020 7501 3666

Energy Rating: We aim to make our particulars both accurate and reliable. However, they are not guaranteed; nor do they form part of an offer or contract. If you require clarification on any points then please contact us, especially if you're traveling some distance to view. Please note that appliances and heating systems have not been tested and therefore no warranties can be given as to their good working order

MARSH &
PARSONS