



16 Longview Road, Prescot, L35 8LW

Offers In The Region Of £135,000

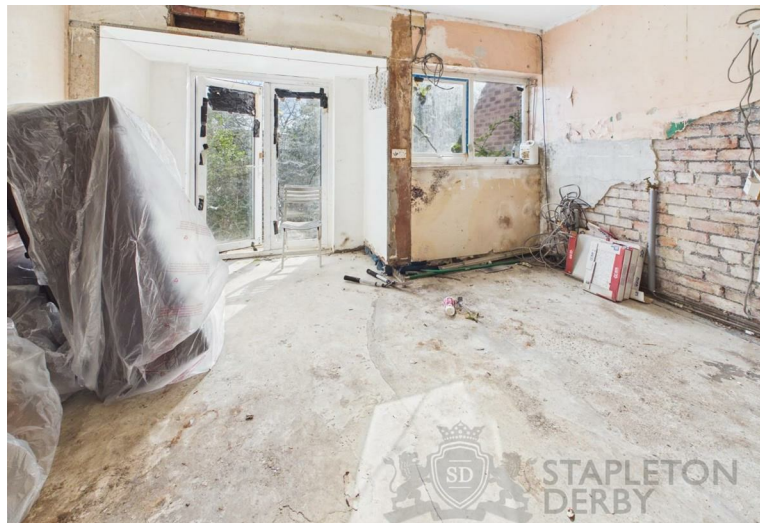


**STAPLETON
DERBY**

Situated in a prime and highly sought-after location, this property on Longview Road, Rainhill offers fantastic potential for buyers looking to create a home tailored to their own taste and style. Requiring renovation throughout, it presents an excellent opportunity to add value and transform the space into something truly special. Ideally positioned directly opposite Whiston Hospital and benefiting from excellent transport links, including easy access to major motorway networks, the property is perfectly suited for commuters and professionals alike.

The accommodation briefly comprises a porch leading into an entrance hallway, a living room, and an open plan kitchen and dining area to the ground floor. To the first floor, there are two generously sized bedrooms, a family bathroom, and a further third bedroom located within the attic space. Externally, the property benefits from off-road parking to the front and access through to the rear. The rear of the property boasts a substantial garden, along with a garage, offering further potential for development or outdoor enjoyment.

This property represents a real opportunity for someone looking to take on a project and create a fantastic family home in a desirable location, with the added benefit of strong future resale potential.

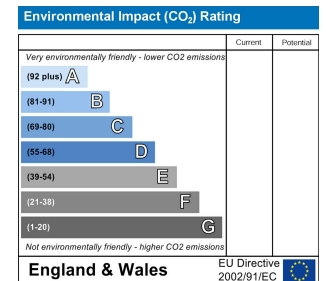
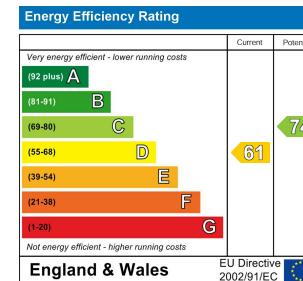








Stapleton Derby
497 Warrington Road Rainhill, Merseyside, L35 0LR
Tel: 0151 430 0717
office@stapletonderby.co.uk
www.stapletonderby.co.uk



IMPORTANT NOTICE TO PURCHASERS

We endeavor to make our sales particulars accurate and reliable, however, they do not constitute or form part of an offer or any contract and none is to be relied upon as statements of representation or fact. Any services, systems and appliances listed in this specification have not been tested by us and no guarantee as to their operating ability or efficiency is given. All measurements have been taken as a guide to prospective buyers only, and are not precise. If you require clarification or further information on any points please contact us. Fixtures and fittings other than those mentioned are to be agreed with the seller.