

FLETCHERS

ESTATE AGENTS



Dale Street, W4

£1,650,000

This stunning end of terrace home has been completely remodelled throughout to a high end specification finish whilst retaining the original Victorian charm.



You enter into a 42 foot long open plan space consisting of a front reception room, a dining area and a fantastic kitchen with bespoke carpentry, stunning marble worktops and island/breakfast bar perfect for entertaining. Skylights and sliding doors bring in plenty of natural light especially with the rear aspect being West facing. The garden has been fully landscaped with patio and planters to create a secluded sitting area, benefitting from a side gate. There is potential subject to permissions to convert the rear part of this into off street parking.

Upstairs on the first floor is a rear double bedroom, accompanied by a spacious principle bedroom at the front along with a luxurious family bathroom and walk in wardrobe. A further double bedroom on the top floor benefits from an en suite bath and shower suite and access to eaves storage. The house has been finished to an exceptional standard with attention to detail, including air conditioning and under floor heating throughout.

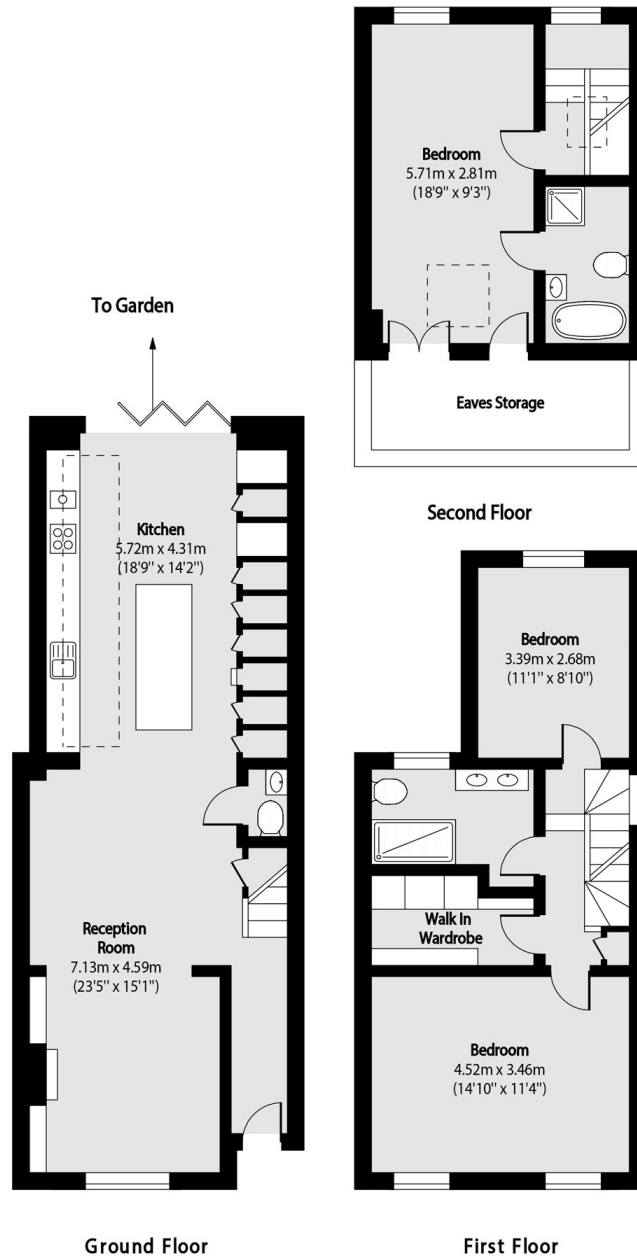
Dale Street is a characterful residential road in the Glebe Estate, popular for its close proximity to Devonshire Road's boutiques, cafés and restaurants as well as Chiswick High Road and Turnham Green which offers tube access within 0.4 miles.

- End of Terrace • Three Bedrooms • Two Bathrooms •
- Exceptional Finish • Completely Refurbished • West Facing Garden •



FLETCHERS

ESTATE AGENTS



Total area (approx): 126.51 sq m (1362 sq. ft)

Eaves Storage total area (approx): 7.36 sq m (79 sq. ft)

Fletchers Chiswick Turnham Green Sales
58 Turnham Green Terrace
London
W4 1QP
020 8987 3000
chiswicksales@fletcherestates.com

Energy Rating: E We aim to make our particulars both accurate and reliable. However they are not guaranteed; nor do they form part of an offer or contract. If you require clarification on any points then please contact us, especially if you're traveling some distance to view. Please note that appliances and heating systems have not been tested and therefore no warranties can be given as to their good working order