



Frosty Hollow

East Hunsbury, Northampton

oriordanbond
SALES & LETTINGS



Frosty Hollow

East Hunsbury
NN4 0SY

Price
£450,000

Offered to the market with no onward chain is this four bedroom detached family home, situated on a corner plot in this desirable East Hunsbury cul-de-sac.

The accommodation comprises; entrance porch, hallway, cloakroom/WC, sitting room with separate dining room, kitchen, family room/snug and a conservatory. To the first floor are four ample bedrooms with an en-suite to the main bedroom, fitted wardrobes to the largest three rooms and a family bathroom. Outside are front and rear garden, a driveway and garage. (C/1466/S)

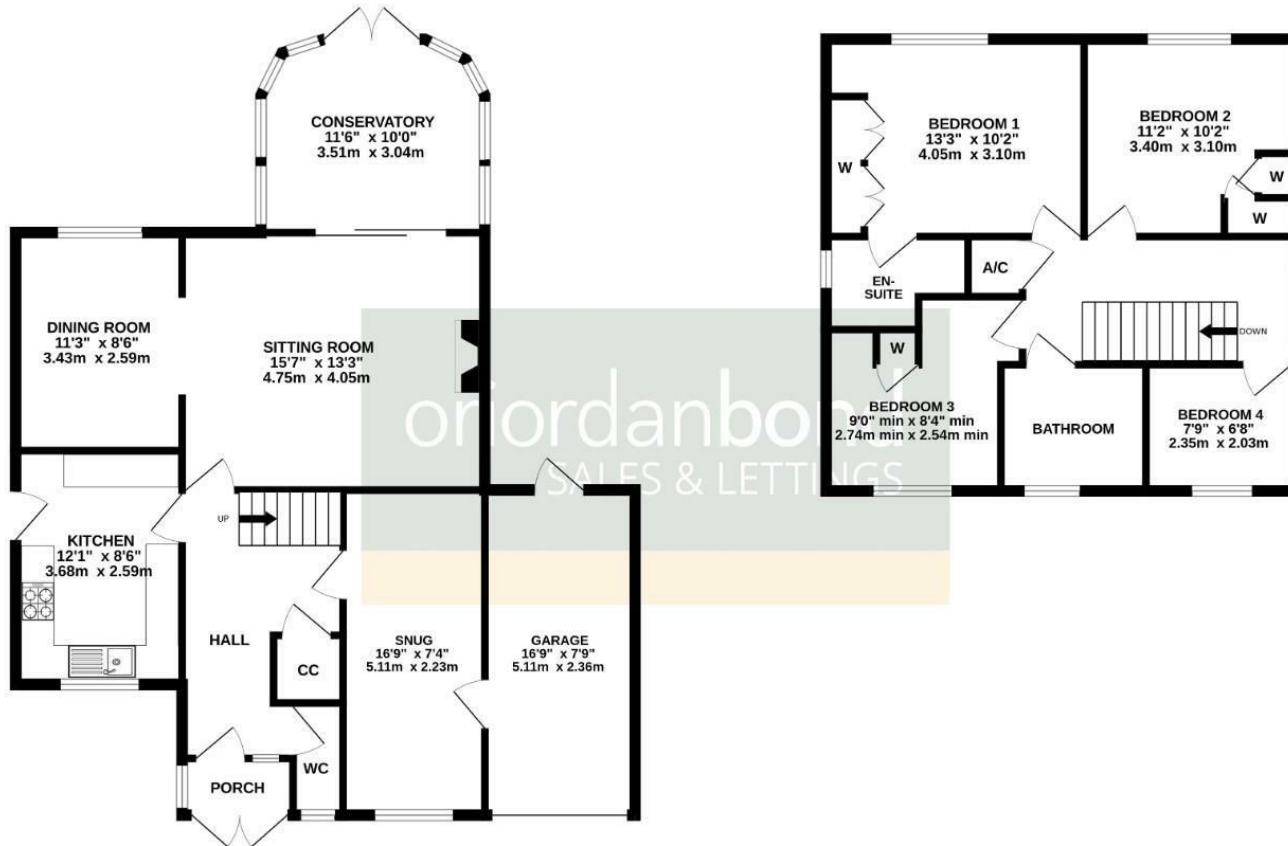
- No Onward Chain
- Three Receptions
- Four Bedrooms
- En-Suite to Master
- Front and Rear Gardens
- Garage and Driveway





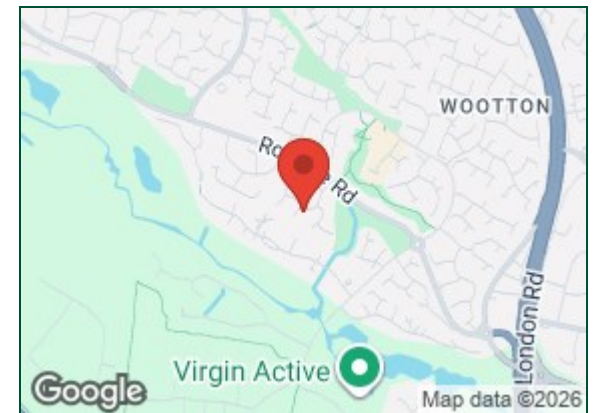
GROUND FLOOR
903 sq.ft. (83.9 sq.m.) approx.

1ST FLOOR
563 sq.ft. (52.3 sq.m.) approx.



TOTAL FLOOR AREA : 1466 sq.ft. (136.2 sq.m.) approx.

Whilst every attempt has been made to ensure the accuracy of the floorplan contained here, measurements of doors, windows, rooms and any other items are approximate and no responsibility is taken for any error, omission or mis-statement. This plan is for illustrative purposes only and should be used as such by any prospective purchaser. The services, systems and appliances shown have not been tested and no guarantee as to their operability or efficiency can be given.
Made with Metropix ©2026



Additional information

- Council Tax Band: E
- Energy Efficiency Rating:

Viewing

Viewing strictly by appointment – details below

Disclaimer

O’Riordan Bond Estate Agents Limited has not tested apparatus, equipment, fittings or services and so cannot verify they are in working order. The buyer is advised to obtain verification from their solicitor or surveyor.

O’Riordan Bond Hunsbury Sales

01604 706007

hunsbury@oriordanbond.co.uk

