



**Guide Price**  
**£350,000**

**Leasehold**

2x  1x  1x 

**Whitehall Lodge,  
Bentley Way, Woodford  
Green, Essex, IG8**

**OVER 60?**

Secure this property  
for up to **59% less!**

 **DOUGLAS  
ALLEN**  
Helping you move forwards



## Main features

- Purpose built ground floor flat
- Garage and communal grounds
- Private balcony
- Moments away from Hatch Forest and local amenities
- Ideal first purchase or for someone downsizing

## Accommodation

### GROUND FLOOR

Entrance Hall

Lounge : 13'9 x 10'5 (4.19m x 3.18m)

Kitchen : 12'2 x 10'4 (3.71m x 3.15m)

Bedroom 1 : 10'6 x 10'4 (3.20m x 3.15m)

Bedroom 2 : 12'2 x 9'10 (3.71m x 3.00m)

Bathroom

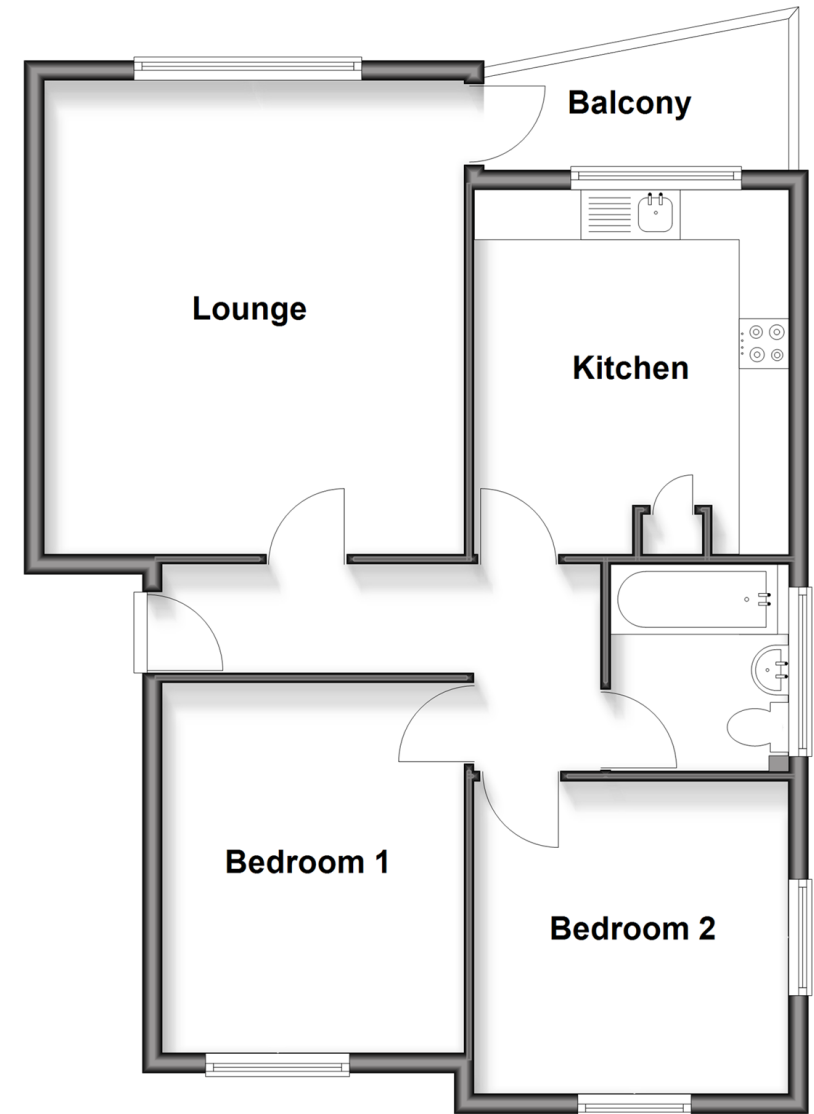
### OUTSIDE

Garage

Communal Garden

## Ground Floor

Approx. 65.0 sq. metres (700.2 sq. feet)



**Call Woodford Green - 020 8505 6343 ■ [douglasallen.co.uk](http://douglasallen.co.uk)**

- Legal advice should be taken to verify fixtures/fittings, planning, alterations and/or lease details
- Appliances & services are untested, dimensions are approximate and floor plans are not to scale
- Through a Homewise Home For Life Plan people aged 60+ can secure this property for up to 50% less, by purchasing a Lifetime Lease.



53618630/20251018/SA/RUM