



Priory Road, NW6

£440,000

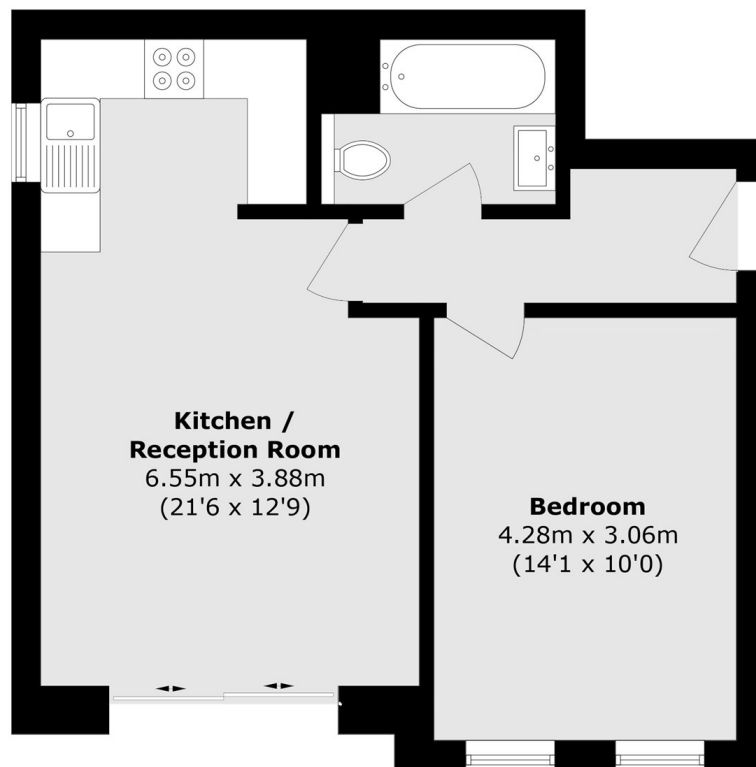
A great opportunity to purchase a spacious one bed flat with direct access onto the communal garden. The property benefits from a share of freehold and it will be sold with no onward chain.

The Property is superbly situated for local transport links at West Hampstead and Finchley Road, with convenient access to many fashionable cafés and local amenities on West End Lane.

Features

- One Bedroom
- Communal Gardens
- Open Plan
- Integrated Appliances
- Share Of Freehold
- No Onward Chain

Priory Road,
London, NW6



Total area (approx.): 46.1 sq. m (496.2 sq. ft)