



Sutton Road, N10

£1,350,000

Situated within a terrace of modern-build homes, this immaculate four double bedroom house benefits from off-street parking. Immaculately presented throughout, the property comprises three bathrooms, a guest WC, and built-in wardrobes in every bedroom. Further benefits include a private rear garden and two roof terraces.

Sutton Road sits within the catchment area for outstanding local schools, including Fortismere and Coldfall. This quiet residential street is also just a short walk from Muswell Hill Broadway, home to a vibrant selection of restaurants, shops, and amenities.

Features

- Four Bedrooms
- Off Street Parking
- School Catchment
- Three Bathrooms
- Immaculate Condition
- Roof Terrace



Sutton Road, N10

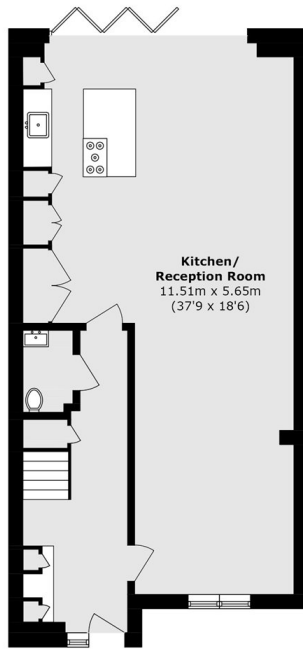
Upon entering the property, you are welcomed by a spacious hallway with access to a guest WC. The ground floor comprises an open-plan kitchen and living area with direct access to a private rear garden through floor-to-ceiling bi-fold doors. The ground floor also benefits from underfloor heating throughout.

The first floor offers two double bedrooms, both benefitting from built-in wardrobes, along with two bathrooms. One of the bedrooms also features an en-suite bathroom and a private terrace overlooking the garden.

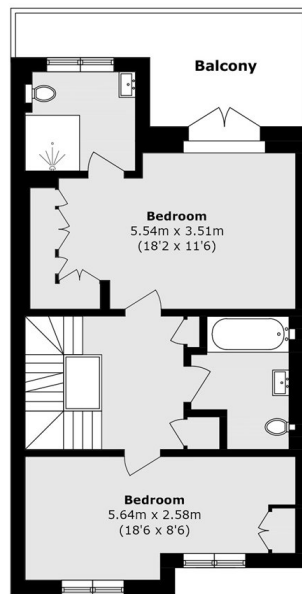
The top floor of this family home comprises two further double bedrooms and a large shared bathroom. Both bedrooms again benefit from built-in wardrobes, with one also offering an additional private terrace overlooking the garden.



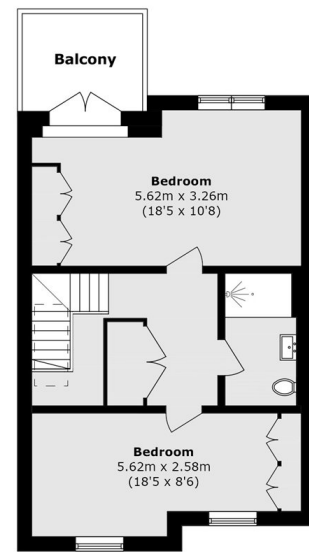
Sutton Road, London, N10



Ground Floor



First Floor



Second Floor

Total Area (approx.): 167.9 sq. m (1807.2 sq. ft)
Balcony Total (approx.): 15.7 sq. m (168.9 sq. ft)