



*jordan fishwick*

**WEST DIDSBURY**  
Didsbury Gate



# Didsbury Gate, West Didsbury, M20 2JA

Guide Price £200,000



## The Property

A stylish raised ground floor apartment forming part of the popular Didsbury Gate development which is an impressive conversion of a Victorian building commissioned by Messrs PJ Livesey. Lying within beautifully landscaped grounds with quality fittings, including recently fitted Herringbone flooring, the living space comprises:- Impressive communal entrance with stairs and lift access to all floors, private entrance hall with walk-in storage cupboard off, living room with large sash window, modern fitted kitchen with a range of high gloss units, double bedroom with fitted wardrobe and the bathroom with contemporary suite. In addition, there are well maintained communal grounds and allocated gated parking. \*No onward chain\*

## Directions

M20 2JA



- Stylish apartment
- Popular development
- Impressive conversion & communal areas
- Beautifully landscaped grounds
- Quality fittings
- Modern kitchen & bathroom
- Living room with large sash window
- Double bedroom with fitted wardrobe
- Residents gated parking
- No onward chain

Postcode - M20 2JA

EPC Rating - B

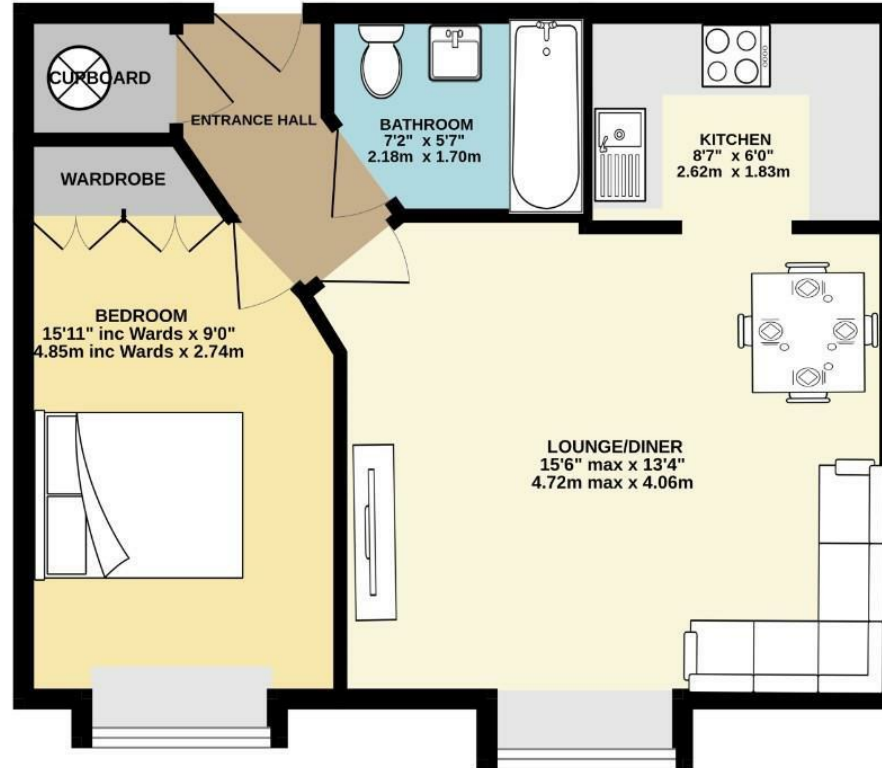
Floor Area - 487.00 sq ft

Local Authority - Manchester City Council

Council Tax - B



487 sq.ft. (45.2 sq.m.) approx.



TOTAL FLOOR AREA: 487 sq.ft. (45.2 sq.m.) approx.  
Measurements are approximate. Not to scale. Illustrative purposes only.  
Made with Metropix ©2026



These particulars are believed to be accurate but they are not guaranteed and do not form a contract. Neither Jordan Fishwick nor the vendor or lessor accept any responsibility in respect of these particulars, which are not intended to be statements or representations of fact and any intending purchaser or lessee must satisfy himself by inspection or otherwise as to the correctness of each of the statements contained in these particulars. Any floorplans on this brochure are for illustrative purposes only and are not necessarily to scale.

Offices also at: Wilmslow, Macclesfield, Hale, Sale, Chorlton, Glossop, Manchester & Salford

757-759 Wilmslow Road, Didsbury Village, Manchester

0161 445 4480

didsbury@jordandfishwick.co.uk  
www.jordandfishwick.co.uk