



PCM

£1,750 PCM

Maples Place

London, E1 2EE

Located moments from Whitechapel Station and just a short walk from the Royal London Hospital is this spacious 1 bedroom apartment.

Set within a small private block, the property features a large open plan kitchen to reception, laminate flooring and integrated appliances including dishwasher, excellent sized bedroom perfect for couples, modern and tiled bathroom suite. Ample storage found in the hallway.

Easy access to the City, with Whitechapel station, Aldgate East tube and Liverpool Street transport hub. Fantastic selection of bars, restaurants, galleries. With Brick Lane, Spitalfields market and many quirky boutiques to explore.

Available from the middle of July.

5 weeks deposit: £2019.23

Council Tax: Band C

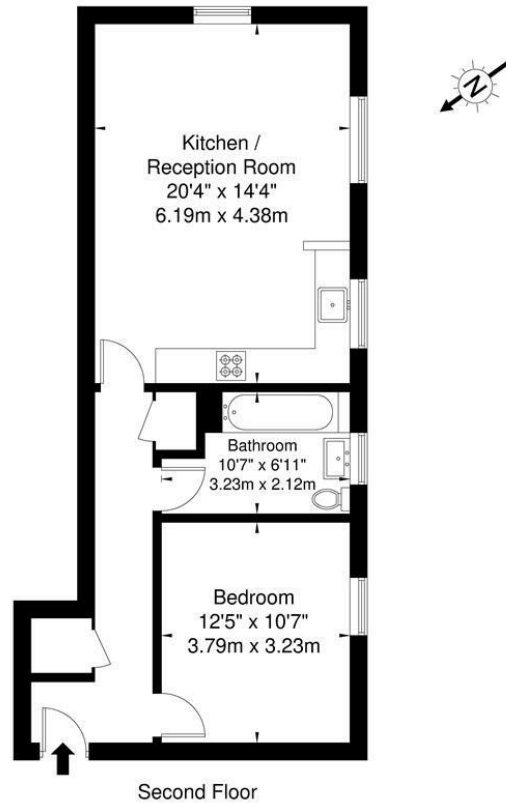
12 month contract: breakclause subject to offer





Maples Place Whitechapel, E1 2EE

Approx. Gross Internal Area = 56.9 sq m / 612 sq ft



Ref

Copyright

**BLEU
PLAN**

The Floor plan is not to scale and measurements and areas shown are approximate and therefore should be used for illustrative purposes only. The plan has been prepared in accordance with the RICS code of Measuring Practice and whilst we have confidence in the information produced it must not be relied on. If there is any aspect of particular importance, you should carry out or commission your own inspection of the property.

Copyright © BLEUPLAN

Energy Efficiency Rating		
	Current	Potential
<i>Very energy efficient - lower running costs</i>		
(92 plus) A		
(81-91) B		
(69-80) C	76	78
(55-68) D		
(39-54) E		
(21-38) F		
(1-20) G		
<i>Not energy efficient - higher running costs</i>		
England & Wales	EU Directive 2002/91/EC	

Agents Note: Whilst every care has been taken to prepare these particulars, they are for guidance purposes only. All measurements are approximate and are for general guidance purposes only and whilst every care has been taken to ensure their accuracy, they should not be relied upon and potential buyers/tenants are advised to recheck the measurements

OFFICE ADDRESS

88 Cheshire Street
London
E2 6EH

OFFICE DETAILS

0207 739 6969
info@peachproperties.com
www.peachproperties.com