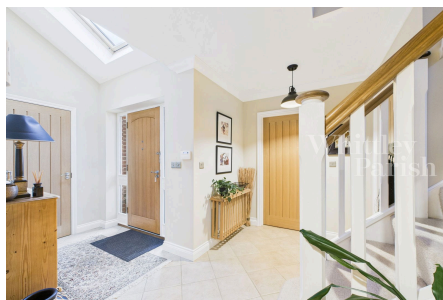


Flordon Road, Newton Flotman, Norwich, NR15 1QX

£595,000 - Freehold - EPC rating tba

4 2 3



Built in 2009 this individually designed 4/5 bedroom family home was constructed to an exacting standard. The reception hall offers a warm welcome and leads to a charming dual aspect sitting room with log burner. The stylish kitchen/breakfast room forms the heart of the home and benefits from a suite of premium Bosch appliances. A generously sized dining room provides an elegant setting for entertaining whilst the study could be used as a home office, guest bedroom or accessible living. A utility room and WC complete the ground floor accommodation. The first floor accommodation comprises three double bedrooms plus a family bathroom and the luxurious principal suite comes with a dressing room and en-suite shower room.

Key Features

- Impressive family home
- Four Double Bedrooms
- Potential ground floor 5th bedroom
- Double garage
- Heating - gas ch, Drainage - mains
- Built 2009 by local builders - Orchard Developments
- Ensuite and dressing room to the main bedroom
- Private rear garden
- Convenient commute to Norwich
- Council Tax Band E

