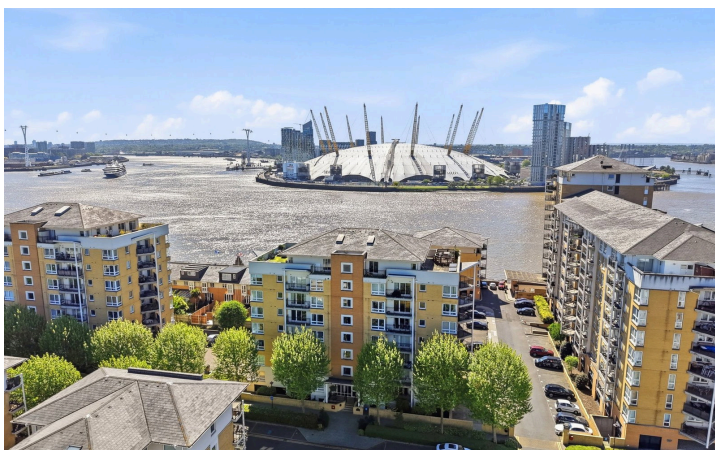


## Bartholomew Court, Canary Wharf, E14

£2,100PCM (Deposit: £2,423)

2 2 1



Tax Band: E Furnished: Unfurnished

Recently Refurbished

- 2 Double Bedrooms

2 Bathroom (1 Ensuite)

- 3rd Floor

Underground Parking Space

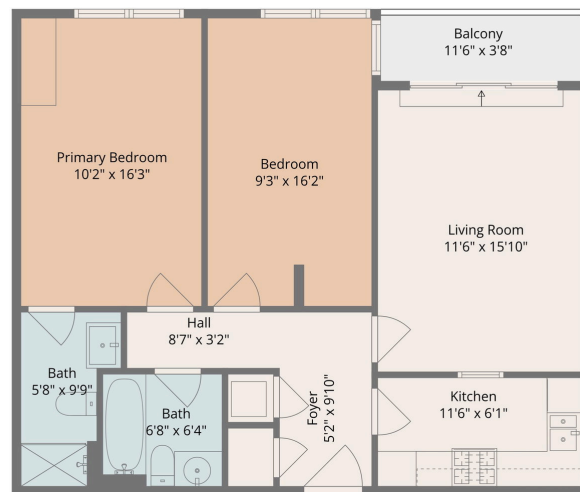
- Lift Access

Private Balcony

- South Facing with Direct River Views & O2

Moments from East India DLR Station

- Onsite Concierge



Total: 786 sq. ft.  
1st Floor: 786 sq. ft.  
Excluded Areas: Balcony: 43 sq. Ft, Walls: 59 sq. ft.  
Disclaimer: Measurements Deemed Highly Reliable But Not Guaranteed



Third floor, two-bedroom, two-bathroom apartment in Bartholomew Court, E14, extending to approx. 786 sq ft and recently refurbished throughout. The property is presented in excellent condition and ready for immediate occupation.

The standout feature is the south-facing private balcony with direct views across the River Thames towards The O2, bringing in great natural light and a real sense of space. The reception room offers comfortable living and dining space, with a separate modern kitchen. Two well-proportioned double bedrooms include a principal with en-suite, alongside a second bathroom.

Further benefits include secure underground parking and an on-site concierge.