

Hyman

Estate & Letting



Hill

Agent

3 Heron View, Southlands Way, Shoreham-by-Sea, West Sussex, BN43 6AU

3 Heron View, Southlands Way, Shoreham-by-Sea, West Sussex, BN43 6AU

£237,500

“ Very well presented one double bedroom flat located in a highly popular location ”

Hyman Hill is delighted to present this exceptionally well-presented one double-bedroom first-floor apartment, ideally situated in a highly sought-after location in Shoreham-by-Sea.

Accessed via a communal lift, the property offers spacious and well-planned accommodation throughout. The welcoming entrance hall provides access to a bright and generously proportioned open-plan lounge/kitchen, creating an ideal space for both relaxing and entertaining. The apartment further benefits from a good-sized double bedroom and a large contemporary bathroom.

Additional features include an allocated parking space and a convenient location close to local amenities, transport links, and Shoreham town centre.

This attractive apartment would make an ideal first-time purchase, investment opportunity, or downsizer's home. Early viewing is highly recommended.

Shoreham-by-Sea is a charming, historic town, 7 miles west of Brighton and 6 miles east of Worthing. The town centre is vibrant offering lots of independent and corporate shops, cafes, pubs and restaurants. The Holmbush Shopping Centre can be found close by providing a large M&S, Next and Tesco.

There is excellent access to the east/west A27 & M23 and public transport services including Shoreham-by-Sea mainline railway station is only a short walk away offering direct trains to Brighton, London and to the west.

The property is in catchment of Primary & Secondary schools, including popular Shoreham Academy with its 'Outstanding' Ofsted rating.

Shoreham by Sea also benefits from a highly popular Beach, South Downs National Park and River Adur affording fantastic water sports and walking opportunities.

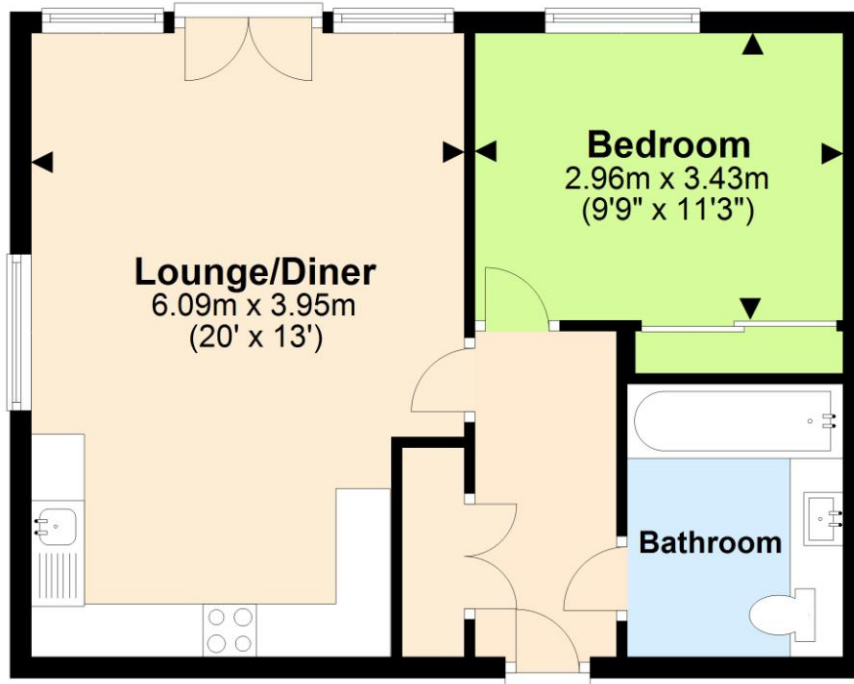
-
- First floor flat
 - One double bedroom
 - Spacious lounge kitchen room
 - Communal lift
 - Allocated parking space
 - Highly popular location
 - Viewing highly advised
 - No chain







First Floor



Total area: approx. 45.1 sq. metres (485.7 sq. feet)

TOTAL AREA DOES NOT INCLUDE OUTBUILDINGS. This floor plan is for illustrative purposes and is not drawn to scale.

Any measurements, floor areas, openings and orientations are approximate and should not be relied upon and do not form part of any agreement. No liability is taken for error or misstatement. Any party must rely upon their own inspection.

Useful Information

Council Tax Band: B - £1,971.92 per annum (2026/2027)

Tenure: Leasehold

Local Authority: Adur District Council



To book a viewing, or a valuation of your own property, get in touch with one of our experts.

Southwick – 01273 597730
info@hymanhill.co.uk

Shoreham – 01273 454511
shoreham@hymanhill.co.uk

Lettings – 01273 464464
lettings@hymanhill.co.uk

www.hymanhill.co.uk