

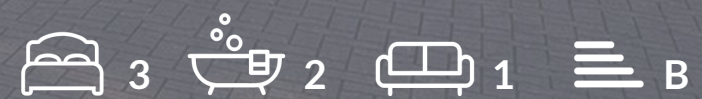


OAKFIELD



Sovereign Harbour South, BN23 5TR

£1,500 Per Month



Sovereign Harbour South, BN23 5TR

A spacious three-bedroom fifth-floor apartment in the sought-after Sovereign Harbour area of Eastbourne, offering stunning panoramic views across the Waterfront, outer harbour and sea from a private balcony.

Situated within a secure gated development, this beautifully presented home features a bright dual-aspect living room, a modern fitted kitchen with integrated appliances, a principal bedroom with en-suite shower room and fitted wardrobes, two further double bedrooms, and a contemporary family bathroom.

Residents can enjoy waterside walks, nearby restaurants and cafés, and convenient access to the Crumbles Retail Park, which offers shops, a gym and everyday amenities. Eastbourne town centre and mainline railway station are approximately three miles away.

Additional benefits include lift access, double glazing, gas central heating, ample visitor parking and a private balcony.

Please Note:
An annual household income of £45,000 per annum is required





Living Room

14'7" x 14'6" (4.45m x 4.42m)

Kitchen

13'6" x 7'8" (4.11m x 2.34m)

Bedroom

14'11" x 10'4" (4.55m x 3.15m)

Bedroom

12'5" x 10'5" (3.78m x 3.18m)

Bedroom

13'7" x 7'9" (4.14m x 2.36m)

Bathroom

11'11" x 6'9" (3.63m x 2.06m)

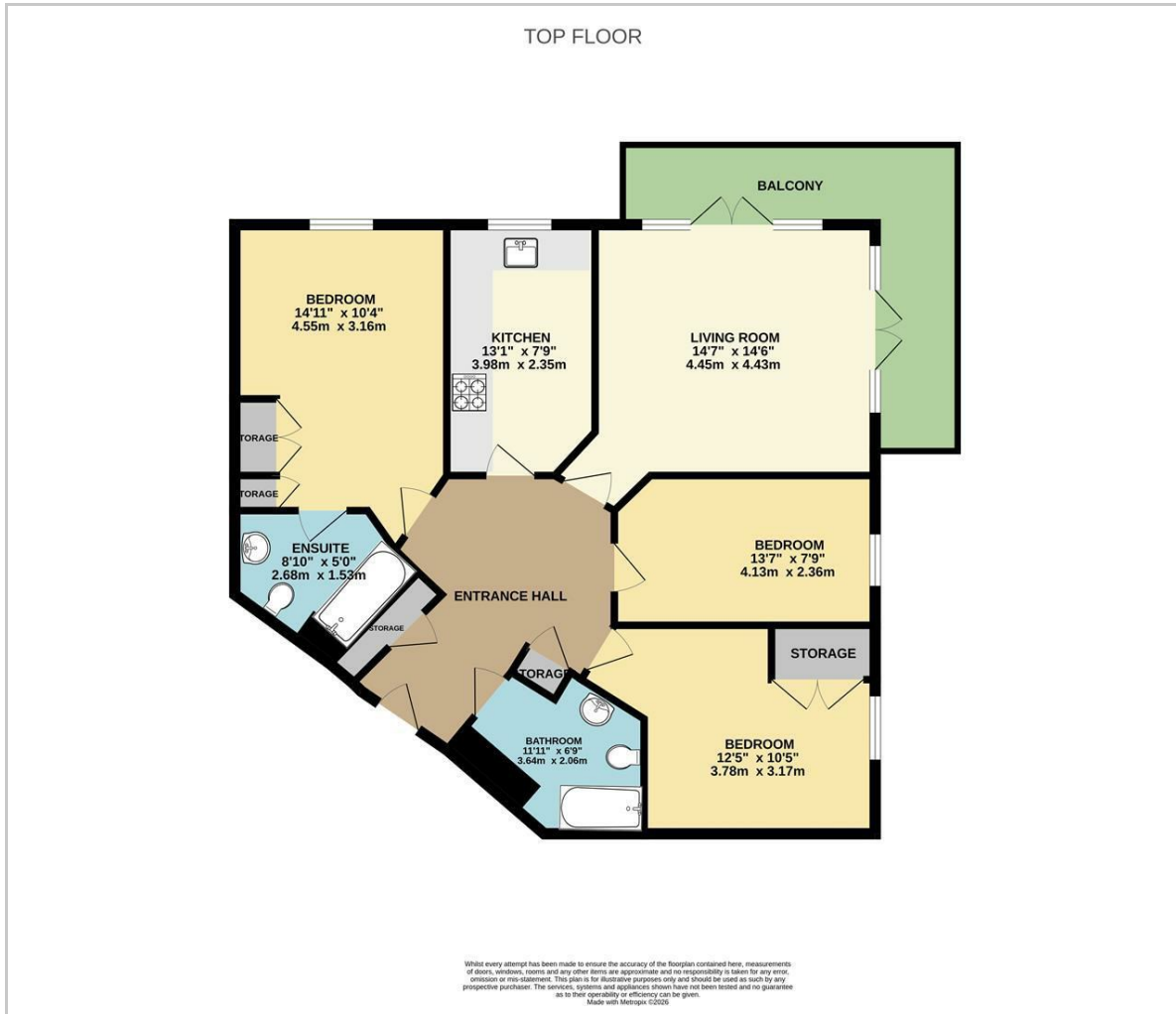
Ensuite

8'9" x 5'0" (2.67m x 1.52m)

Council Tax Band E - £3,224.12 Per Annum



Floor Plan

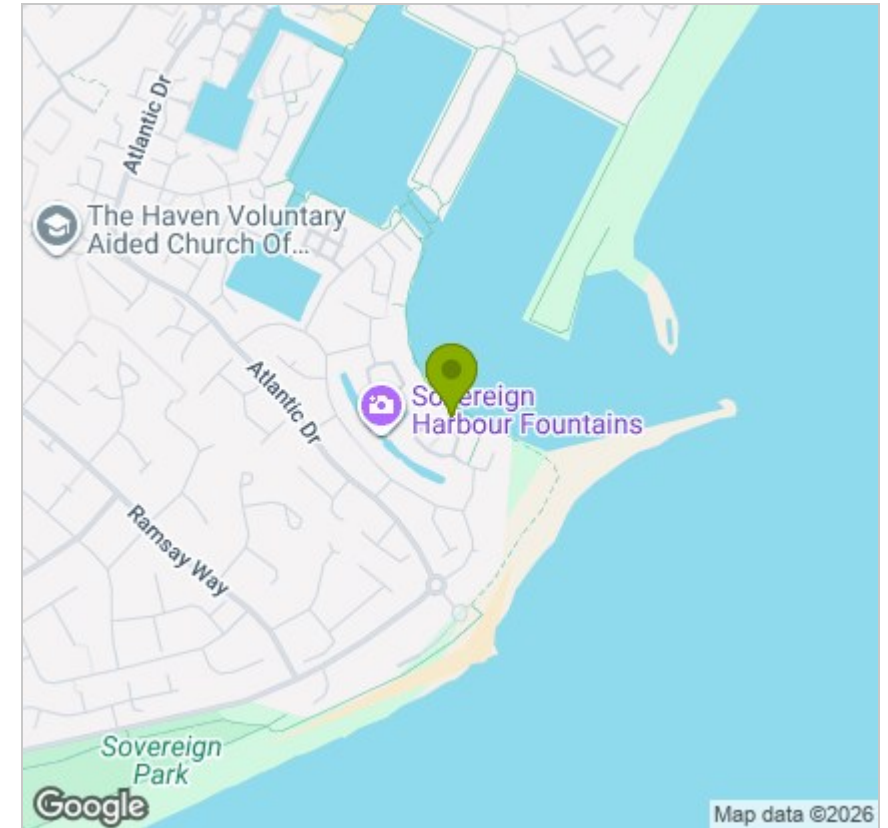


Viewing

Please contact us on 01323 405553 if you wish to arrange a viewing appointment for this property or require further information.

These particulars, whilst believed to be accurate are set out as a general outline only for guidance and do not constitute any part of an offer or contract. Intending purchasers should not rely on them as statements of representation of fact, but must satisfy themselves by inspection or otherwise as to their accuracy. No person in this firm's employment has the authority to make or give any representation or warranty in respect of the property.

Area Map



Energy Efficiency Graph

