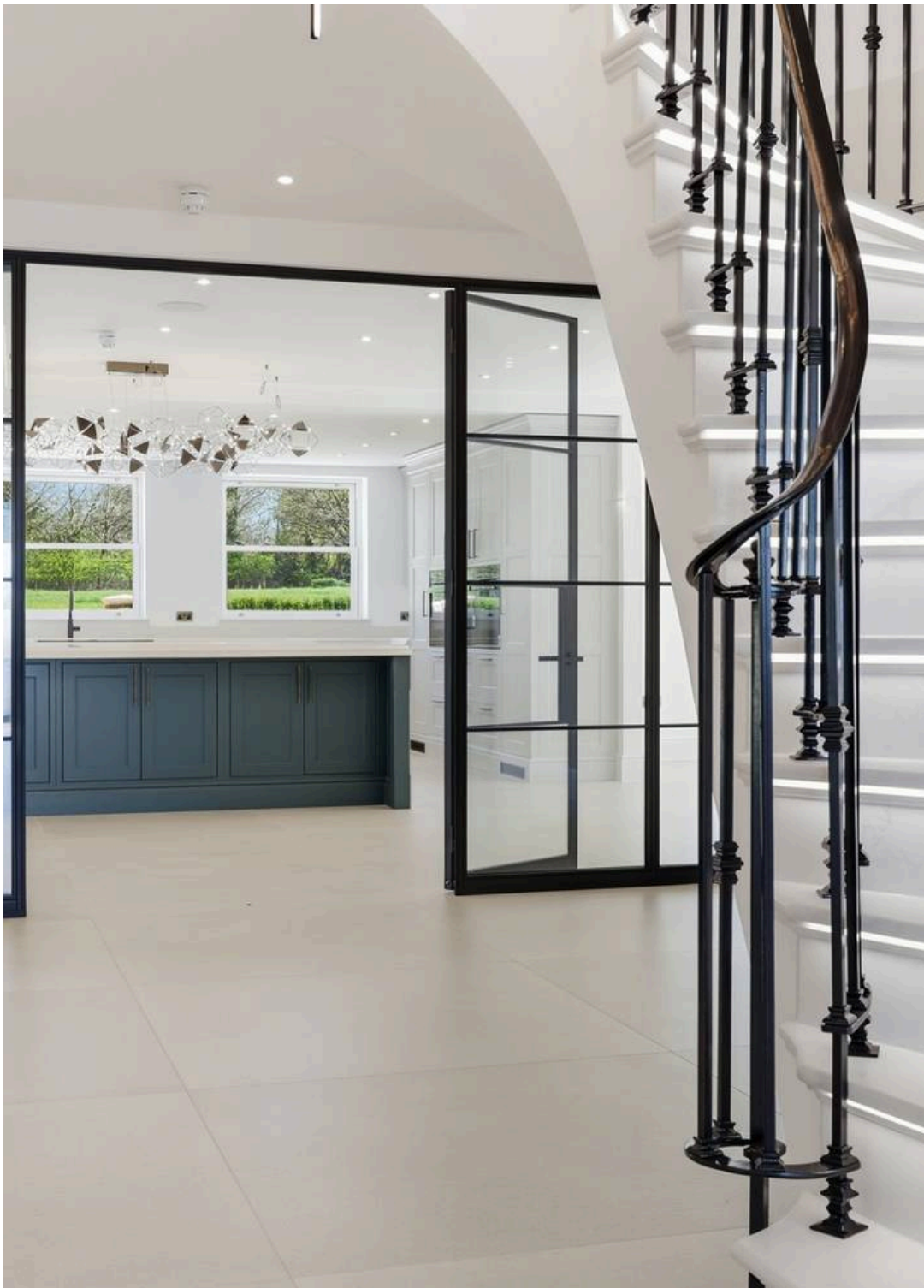




Walkers
People & Property

Mope Lane, Wickham Bishops. CM8 3JP

Guide Price £4,000,000 - £4,500,000



Mope Lane

Wickham Bishops, Witham. CM8 3JP

An exceptional newly built country residence of considerable scale, extending to over 9,100 sq ft, positioned on one of the most sought-after roads in the county, with far-reaching views across open countryside towards Benton Hall Golf & Country Club.

Council Tax band: TBD

Tenure: Freehold

EPC Energy Efficiency Rating: B

EPC Environmental Impact Rating: A

Mope Lane

Wickham Bishops, CM8 3JP

An exceptional newly built country residence of considerable scale, extending to over 9,100 sq ft, positioned on one of the most sought-after roads in the county, with far-reaching views across open countryside towards Benton Hall Golf & Country Club.

Council Tax band: TBD

Tenure: Freehold

EPC Energy Efficiency Rating: B

EPC Environmental Impact Rating: A

- Approximately 9,100 sq ft of accommodation including annexe
- Prominent Mope Lane position with far-reaching countryside views
- Gated entrance with extensive driveway and quadruple garage
- Self-contained studio annexe above garage
- Bespoke Kitchencraft kitchen with twin islands and separate pantry & boot room
- Principal suite with balcony, twin dressing rooms and dual en-suites
- Striking elliptical staircase and ultra luxury finish throughout
- Air source heating, solid concrete floors, solar panels, integrated audio, CCTV and fibre broadband

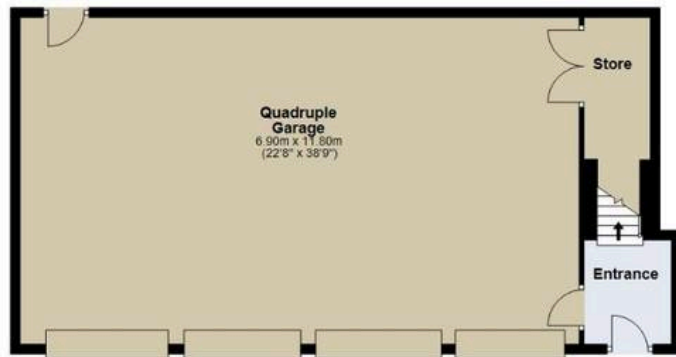








Outbuilding
Approx. 92.2 sq metres (992.7 sq. feet)



First Floor Annex
Approx. 82.2 sq. metres (884.7 sq. feet)



Psst... Have you heard of

Walkers discreet marketing?

Many people lose out on their dream home to someone in a better position.

Often, it is because they have delayed putting their house on the market, preferring to find somewhere first and then sell,

That is why we have innovated a totally unique and highly confidential moving home solution to put you in a competitive position.

Let us find you a buyer *without any advertising or pressure* and without the neighbours knowing.

Your secret is safe with us....

Get in touch for a complimentary valuation.

Looking To Sell Or Let Your Home?

Book your free valuation to see how much your home is worth.

Contact Us
01277 355005



Our Website

www.walkersstates.co.uk



Our Address

90 High Street
Ingatstone
CM4 9DW



www.walkersstates.co.uk

About Us

Walkers | People & Property is built on a lifelong family passion for homes. Martin, Gillian and Adam Walker lead a respected, professional team who live and breathe all aspects of property. With over 30 years of experience, we understand the moving process on a personal level and are committed to delivering exceptional results. Most of all, helping people move is our hobby, and handing over the keys to excited buyers remains our favourite moment.

Get In Touch



Browse Properties

